



CJ Rush

Automatic Contemporary Revolving Door

Features

- Automatic center shaft revolving door in 3 or 4 wing configurations
- Custom designs and sizes to meet our customers exacting needs
- Narrow stile construction and hair line joints for architectural elegance
- Concealed heavy duty collapsing mechanism and tapered roller bearings
- PLC control with on board diagnostics for easy, rapid service
- Full perimeter weather seals for energy efficiency
- Upgraded Sensor package designed for added safety
- Optional "Rushclad" - adhesive applied wrap around design cladding for high-quality, long-lasting finish



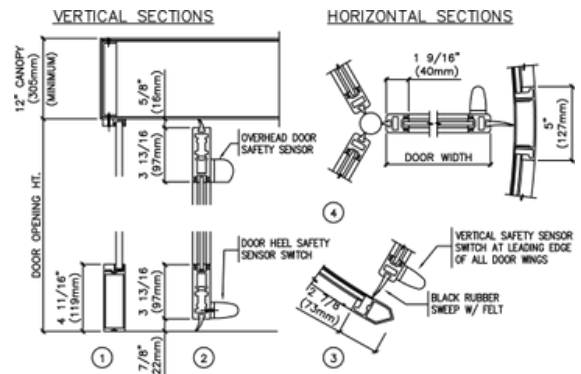
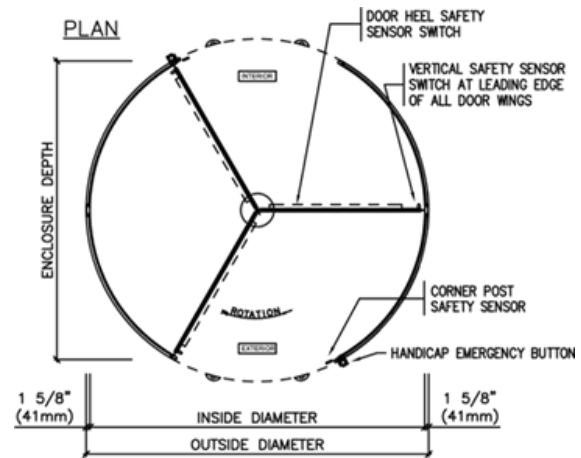
Automated Contemporary Revolving Door

An elegant, high quality and energy efficient automatic revolving door with enhanced safety

All specifications are subject to change.

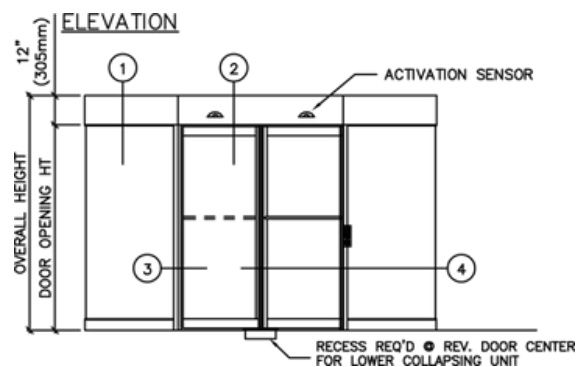
Specifications

Description	Standard Configuration	Options
Diameters	Up to 12' (3700 mm)	Custom diameters available
Heights	7' (2130 mm) to 8'6" (2600 mm) door opening height	
Wings	3 or 4 wing	
Sweeps	Rubber/Felt sweeps	
Locks	Concealed Deadbolt into bottom rails	
Finishes	Clear or bronze anodized standard	Paint or cladding in Rushclad Stainless Steel or Muntz, hair line joints
Collapsing	Emergency bookfold - concealed in rails	
Canopy	12" (300 mm) minimum	Custom heights, extended, as required
Drum glass	5/16" (8 mm) laminated	Consult factory
Wing glass	1/4" (6 mm) tempered glass, factory glazed	
Wing Rails/Stiles	3 - 15/16" (100 mm) top and bottom rails, 1/3-4" (45 mm) stiles	
Bottom bearings	Tapered steel roller bearings	
Speed control	Automatic overhead, PLC programmable Slow speed activation - 1/2 design speed Emergency stop button included	
Ceiling	Two-piece circular aluminum, standard	To match special finish, or cladding
Roof	Full circular to match finish	
Lights	Two LED lights per door, 3-1/4" (82 mm) diameter	
Custom Options	Consult Factory	
Design/testing	ANSI/BMHA A156.27, ASTM E-283	Speakers/Enunciator for customer awareness Floor grilles radius cut from stainless steel sheet



Door Diameter	Opening Width	Enclosure Depth
3 Wing		
10 ft.	55 3/4" (1416 mm)	104 5/8" (2657 mm)
11 ft.	61 3/4" (1568 mm)	115" (2921 mm)
12 ft.	67 3/4" (1721 mm)	129 3/8" (3286 mm)
4 Wing		
10 ft.	80 5/8" (2048 mm)	86" (2657 mm)
11 ft.	89 1/8" (2264 mm)	94 1/2" (2400 mm)
12 ft.	97 5/8" (2480 mm)	103" (2616 mm)

Based on outside diameters of doors



All specifications are subject to change.