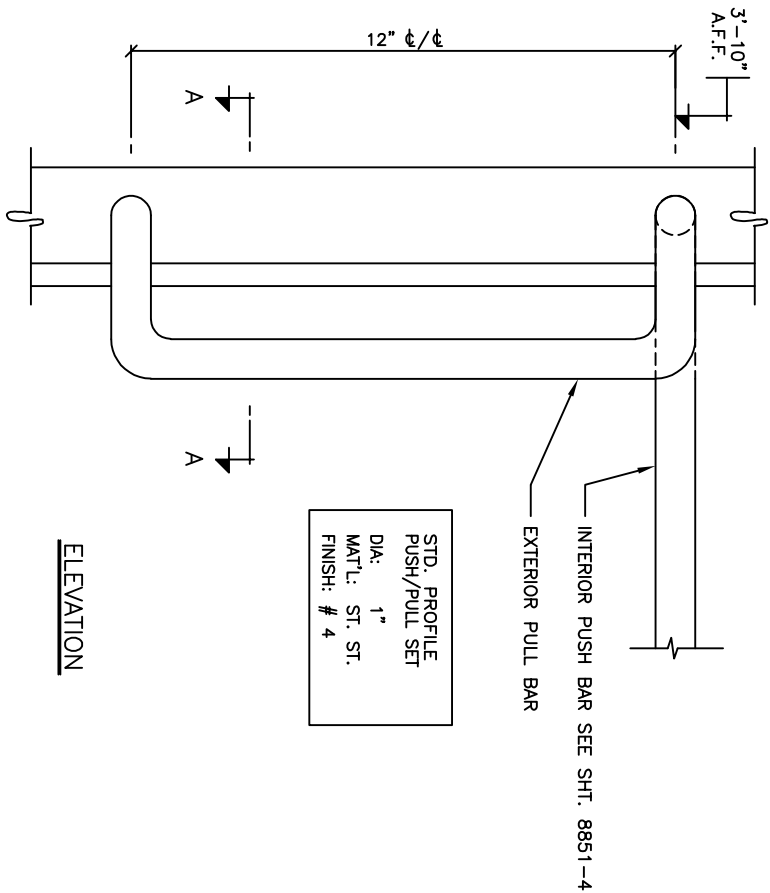


SHOP NOTE:
FOR LCN 2030 CONCEALED CLOSER
MINIMUM SIZE OF DOOR OPENING
WIDTH MUST BE 36" FOR SINGLE
DOORS, AND 72" FOR PAIRS.

LCN 1461 EXPOSED CLOSER
TO BE USED FOR DOORS UNDER 36" WIDTH



STD. PROFILE
PUSH/PULL SET
DIA: 1"
MAT'L: ST. ST.
FINISH: # 4

SHOP NOTE:

FINISH= PAINTED / ANODIZED
1/4" TEMPERED GLASS= CLEAR

DOOR HARDWARE

- STANLEY / RUSH TYPE BALANCED DOOR HARDWARE
- OVERHEAD CONCEALED LCN 2030 SERIES CLOSER
- ADAMS RITE MS 1861 WITH CYLINDER AT EXT., THUMBTURN AT INT.
- 1/2"X5" ALUMINUM EXTRUDED THRESHOLD (MILL FIN.)

Date	REVISIONS	By	Issue
No.	ISSUED	Date	

IMPORTANT NOTICE

- C.J. Rush wishes to bring to your attention the following, for which we assume NO RESPONSIBILITY:
- (1) The use of these drawings by other parties is the sole responsibility of that party as to site conditions, measurements, etc..
 - (2) Movement of structures by forces causing mis-alignment and improper function of our product.
 - (3) Results of glass breakage causing bodily harm through improper use or mischief.

SPECIAL REFERENCE NOTE

Very often the method of manufacturing as shown on these shop drawings are a development of the skills of the company. Any reproduction and or distribution in whole or in part, without expressed or written consent is strictly prohibited.

C.J. Rush

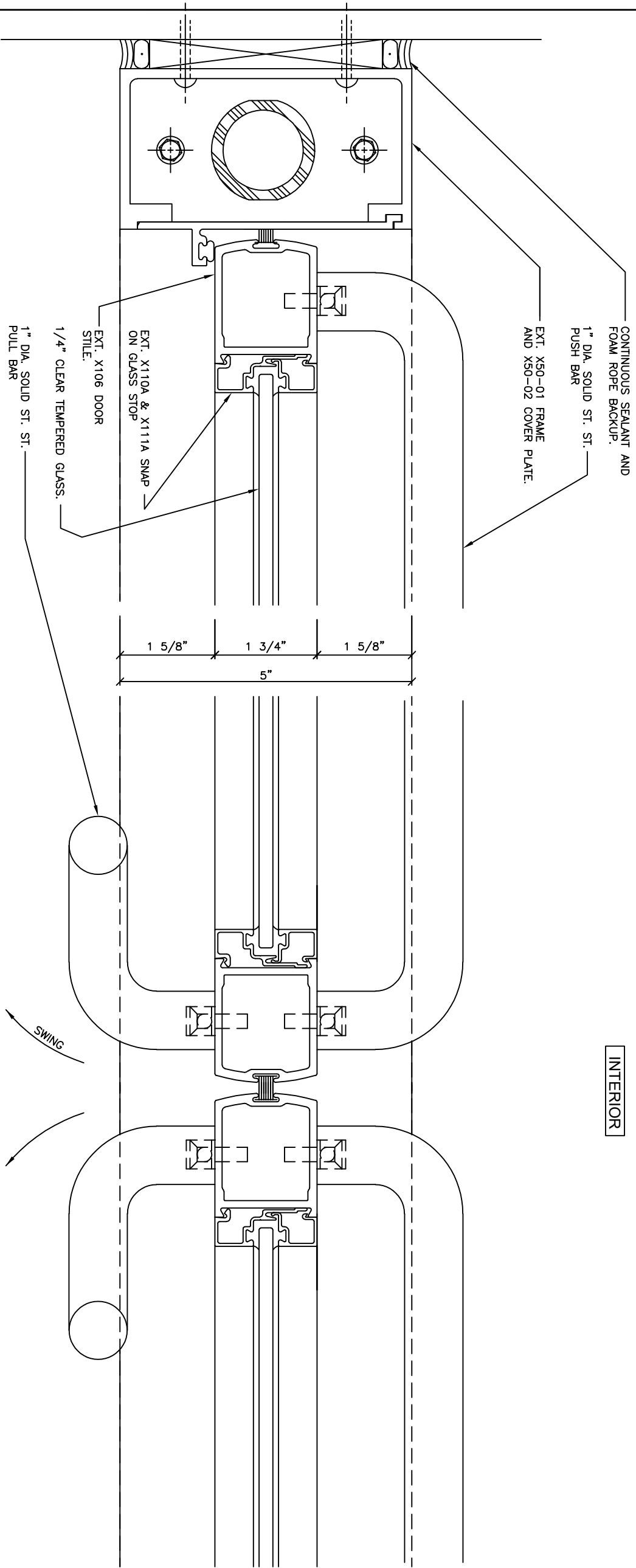


65 RIVERA DRIVE
MARRHAM, ONT.
CANADA, L3R 5J6

Tel: 888-301-5407
905-944-8005
Fax 905-944-8006

2010 SERIES
BALANCED DOOR
PLAN / ELEVATION

BUILDING	
LOCATION	
ARCH-ENG.	
CONTRACTOR	
Drawn by	Job No.
Checked by	
Scale	
Date	Dwg. No.
Finish	01



INTERIOR

EXTERIOR

1 PLAN / DETAILS

Date	REVISIONS	By	Issue
No.	ISSUED	Date	

IMPORTANT NOTICE

- C.J. Rush wishes to bring to your attention the following, for which we assume NO RESPONSIBILITY:
- (1) The use of these drawings by other parties is the sole responsibility of that party as to site conditions, measurements, etc..
 - (2) Movement of structures by forces causing mis-alignment and improper function of our product.
 - (3) Results of glass breakage causing bodily harm through improper use or mischief.

SPECIAL REFERENCE NOTE

Very often the method of manufacturing as shown on these shop drawings are a development of the skills of the company. Any reproduction and or distribution in whole or in part, without expressed or written consent is strictly prohibited.

C.J. Rush



65 RIVERDA DRIVE
MARCHMIA, ONT.
CANADA, L9R 5J6

Tel. 888-301-5407
905-944-8005
Fox 905-944-8006

BALANCED DOOR
PLAN / DETAILS

BUILDING	
LOCATION	
ARCH-ENG.	
CONTRACTOR	
Drawn by	Job No.
Checked by	
Scale	
Date	Dwg. No. 02
Finish	



IMPORTANT NOTICE

C.J. Rush wishes to bring to your attention the following, for which we assume NO RESPONSIBILITY:

- (1) The use of these drawings by other parties is the sole responsibility of that party as to site conditions, measurements, etc.
- (2) Movement of structures by forces causing misalignment and improper function of our product
- (3) Results of gloss breakage causing bodily harm through improper use or mischief.

SPECIAL REFERENCE NOTE

Very often the method of manufacturing as shown on these shop drawings are a development of the skills of the company. Any reproduction and or distribution in whole or in part, without expressed written consent is strictly prohibited.

C.J. Rush

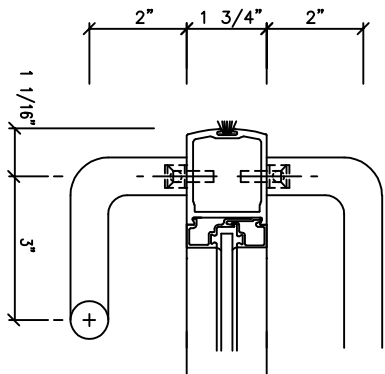
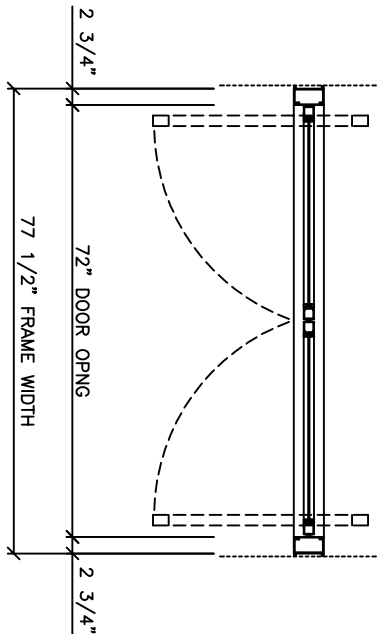
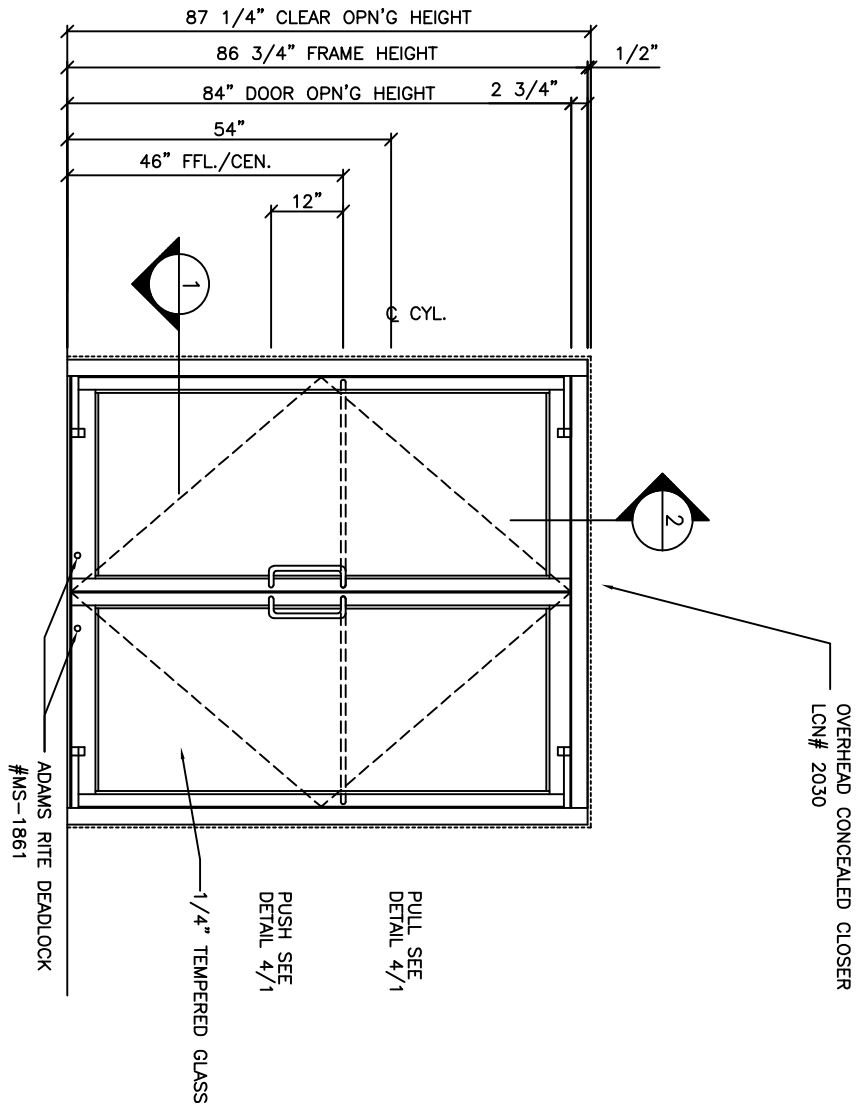


65 RIVIERA DRIVE
MARKHAM, ONT.
CANADA, L3R 5J6
Tel. 888-301-5407
905-944-8005
Fax 905-944-8006

BALANCED DOOR SECTION / DETAILS

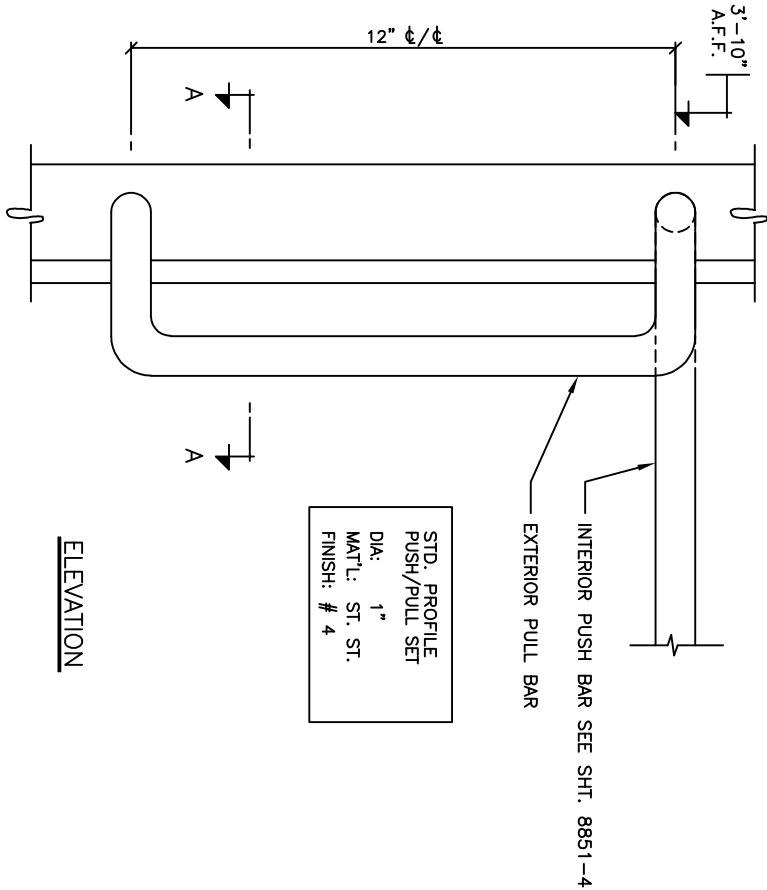
Finish	
--------	--

Dwg. No. 03



SHOP NOTE:
FOR LCN 2030 CONCEALED CLOSER
MINIMUM SIZE OF DOOR OPENING
WIDTH MUST BE 36" FOR SINGLE
DOORS, AND 72" FOR PAIRS.

LCN 1461 EXPOSED CLOSER
TO BE USED FOR DOORS UNDER 36" WIDTH



STD. PROFILE
PUSH/PULL SET
DIA: 1"
MAT'L: ST. ST.
FINISH: # 4

SHOP NOTE:

FINISH= PAINTED / ANODIZED
1/4" TEMPERED GLASS= CLEAR

DOOR HARDWARE

- STANLEY / RUSH TYPE BALANCED DOOR HARDWARE
- OVERHEAD CONCEALED LCN 2030 SERIES CLOSER
- ADAMS RITE MS 1861 WITH CYLINDER AT EXT., THUMBTURN AT INT.
- 1/2"X5" ALUMINUM EXTRUDED THRESHOLD (MILL FIN.)

Date	REVISIONS	By	Issue
No.	ISSUED	Date	

IMPORTANT NOTICE

- C.J. Rush wishes to bring to your attention the following, for which we assume NO RESPONSIBILITY:
- (1) The use of these drawings by other parties is the sole responsibility of that party as to site conditions, measurements, etc..
 - (2) Movement of structures by forces causing mis-alignment and improper function of our product.
 - (3) Results of glass breakage causing bodily harm through improper use or mischief.

SPECIAL REFERENCE NOTE

Very often the method of manufacturing as shown on these shop drawings are a development of the skills of the company. Any reproduction and or distribution in whole or in part, without expressed or written consent is strictly prohibited.

C.J. Rush

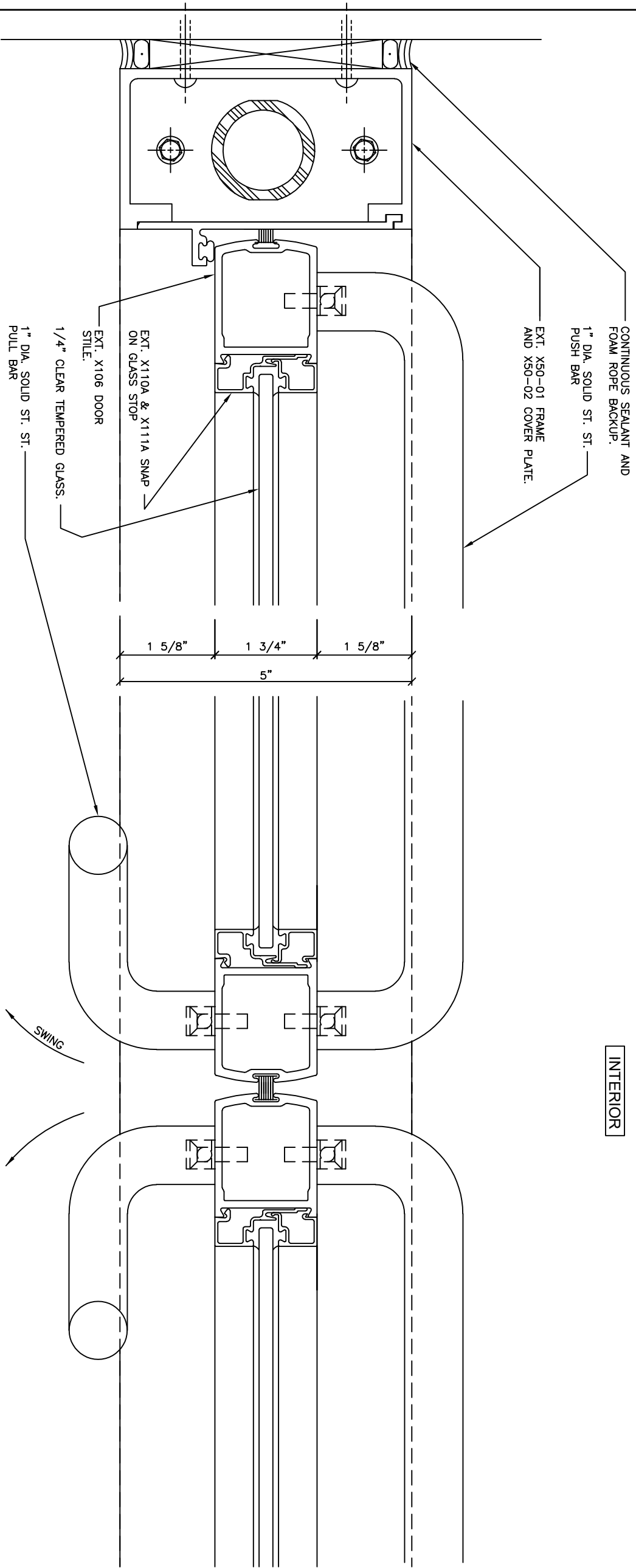


65 RIVERA DRIVE
MARRHAM, ONT.
CANADA, L3R 5J6

Tel: 888-301-5407
905-944-8005
Fax 905-944-8006

2010 SERIES
BALANCED DOOR
PLAN / ELEVATION

BUILDING	
LOCATION	
ARCH-ENG.	
CONTRACTOR	
Drawn by	Job No.
Checked by	
Scale	
Date	Dwg. No.
Finish	01



INTERIOR

EXTERIOR

1 PLAN / DETAILS

Date	REVISIONS	By	Issue
No.	ISSUED	Date	

IMPORTANT NOTICE

- C.J. Rush wishes to bring to your attention the following, for which we assume NO RESPONSIBILITY:
- (1) The use of these drawings by other parties is the sole responsibility of that party as to site conditions, measurements, etc..
 - (2) Movement of structures by forces causing mis-alignment and improper function of our product.
 - (3) Results of glass breakage causing bodily harm through improper use or mischief.

SPECIAL REFERENCE NOTE

Very often the method of manufacturing as shown on these shop drawings are a development of the skills of the company. Any reproduction and or distribution in whole or in part, without expressed or written consent is strictly prohibited.

C.J. Rush

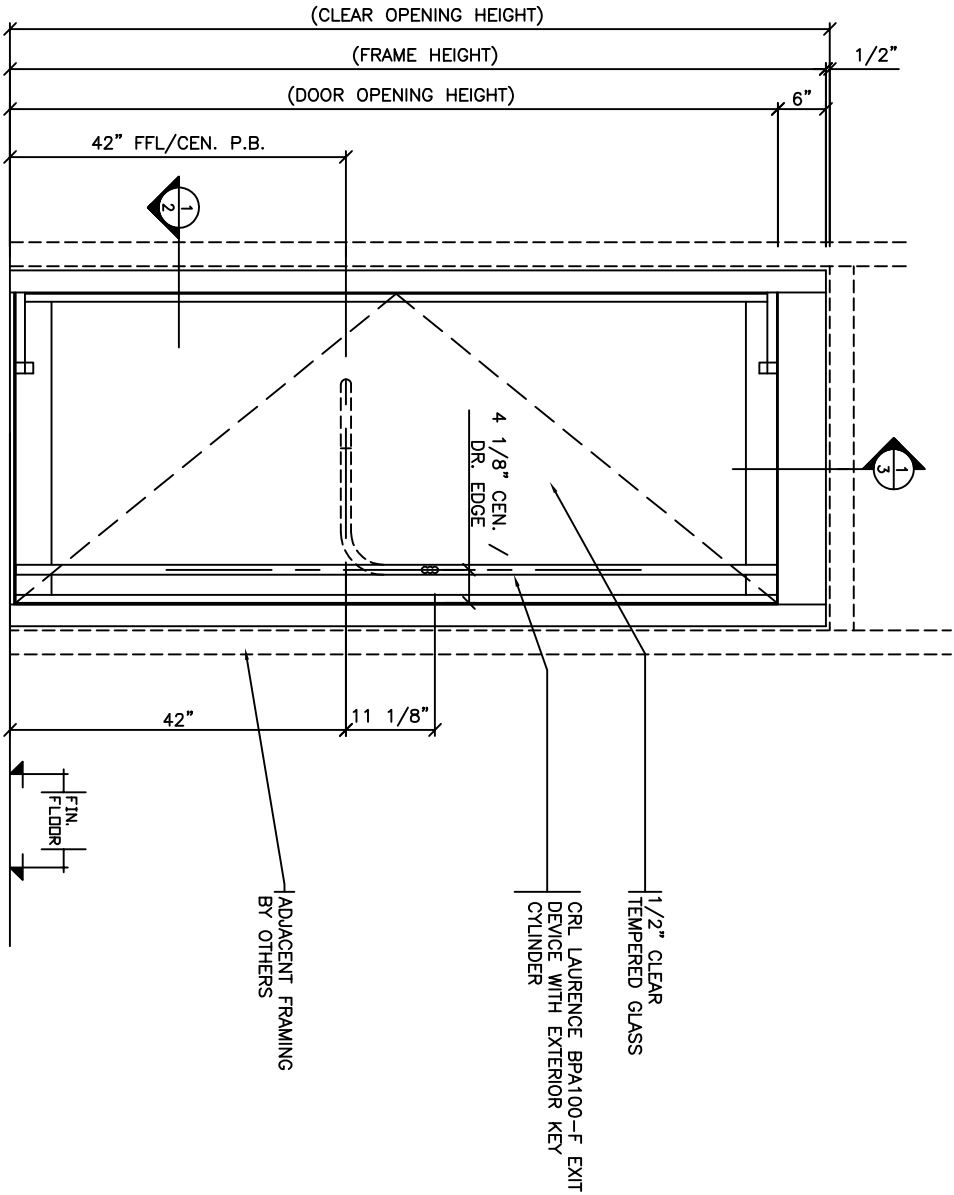


65 RIVERA DRIVE
MARCHMIA, ONT.
CANADA, L9R 5J6

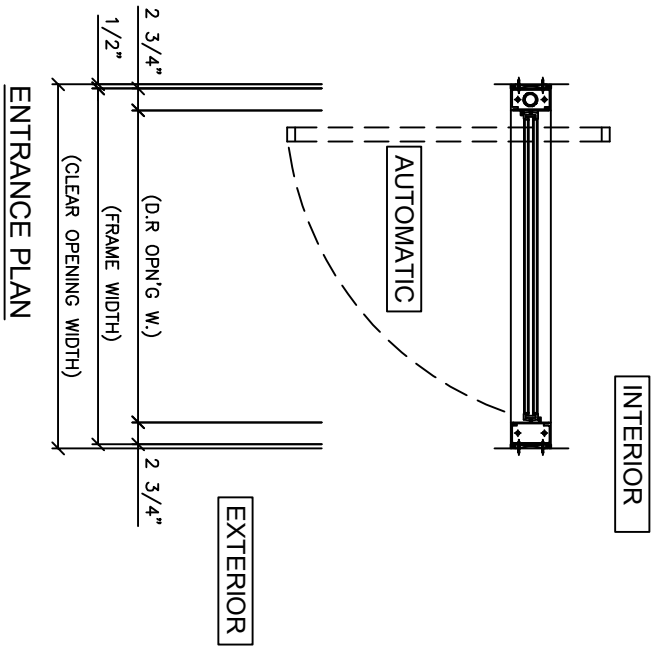
Tel. 888-301-5407
905-944-8005
Fox 905-944-8006

BALANCED DOOR
PLAN / DETAILS

BUILDING	
LOCATION	
ARCH-ENG.	
CONTRACTOR	
Drawn by	Job No.
Checked by	
Scale	
Date	Dwg. No. 02
Finish	



ENTRANCE ELEVATION
1 REQUIRED



G.C. NOTE:
MINIMUM DOOR OPENING WIDTH FOR
SINGLE AUTOMATIC BALANCED DOOR
IS 39".

DOOR HARDWARE

- STANLEY MAGIC FORCE POWER OPERATOR
- CM25/4 PUSH BUTTONS SENT LOOSE, SITE APPLIED
- CRL BPA100F EXIT DEVICE C32D FINISH WITH ESK1BSP ELECTRIC STRIKE AND CYLINDER KEY AT EXTERIOR
- STD. WEATHER SWEEPS, FULL PERIMETER.
- 1/2" X 5" ALUMINUM THRESHOLD (MILL FINISH)

SHOP NOTE:

FINISH=
GLASS TINT = CLEAR

Date	REVISIONS	By	Issue
No.	ISSUED	Date	
	FOR APPROVAL	?	

IMPORTANT NOTICE

- C.J. Rush wishes to bring to your attention the following, for which we assume NO RESPONSIBILITY:
- (1) The use of these drawings by other parties is the sole responsibility of that party as to site conditions, measurements, etc.,.
 - (2) Movement of structures by forces causing mis-alignment and improper function of our product.
 - (3) Results of glass breakage causing bodily harm through improper use or mischief.

SPECIAL REFERENCE NOTE

Very often the method of manufacturing as shown on these shop drawings are a development of the skills of the company. Any reproduction and or distribution in whole or in part, without expressed or written consent is strictly prohibited.

C.J. Rush



65 RIVERA DRIVE
MARRHAM, ONT.
CANADA, L3R 5J6

Tel. 888-301-5407
905-944-8005
Fax 905-944-8006

2030 SERIES
BALANCED DOOR
PLAN / ELEVATION

BUILDING ?	
LOCATION ?	
ARCH-ENG.	
CONTRACTOR ?	
Drawn by ?	Job No.
Checked by ?	?
Scale	
Date ?	Dwg. No.
Finish	01

Date	REVISIONS	By	Issue
No.	ISSUED	Date	

IMPORTANT NOTICE

- C.J. Rush wishes to bring to your attention the following, for which we assume NO RESPONSIBILITY:
- (1) The use of these drawings by other parties is the sole responsibility of that party as to site conditions, measurements, etc..
 - (2) Movement of structures by forces causing mis-alignment and improper function of our product.
 - (3) Results of glass breakage causing bodily harm through improper use or mischief.

SPECIAL REFERENCE NOTE

Very often the method of manufacturing as shown on these shop drawings are a development of the skills of the company. Any reproduction and or distribution in whole or in part, without expressed or written consent is strictly prohibited.

C.J. Rush



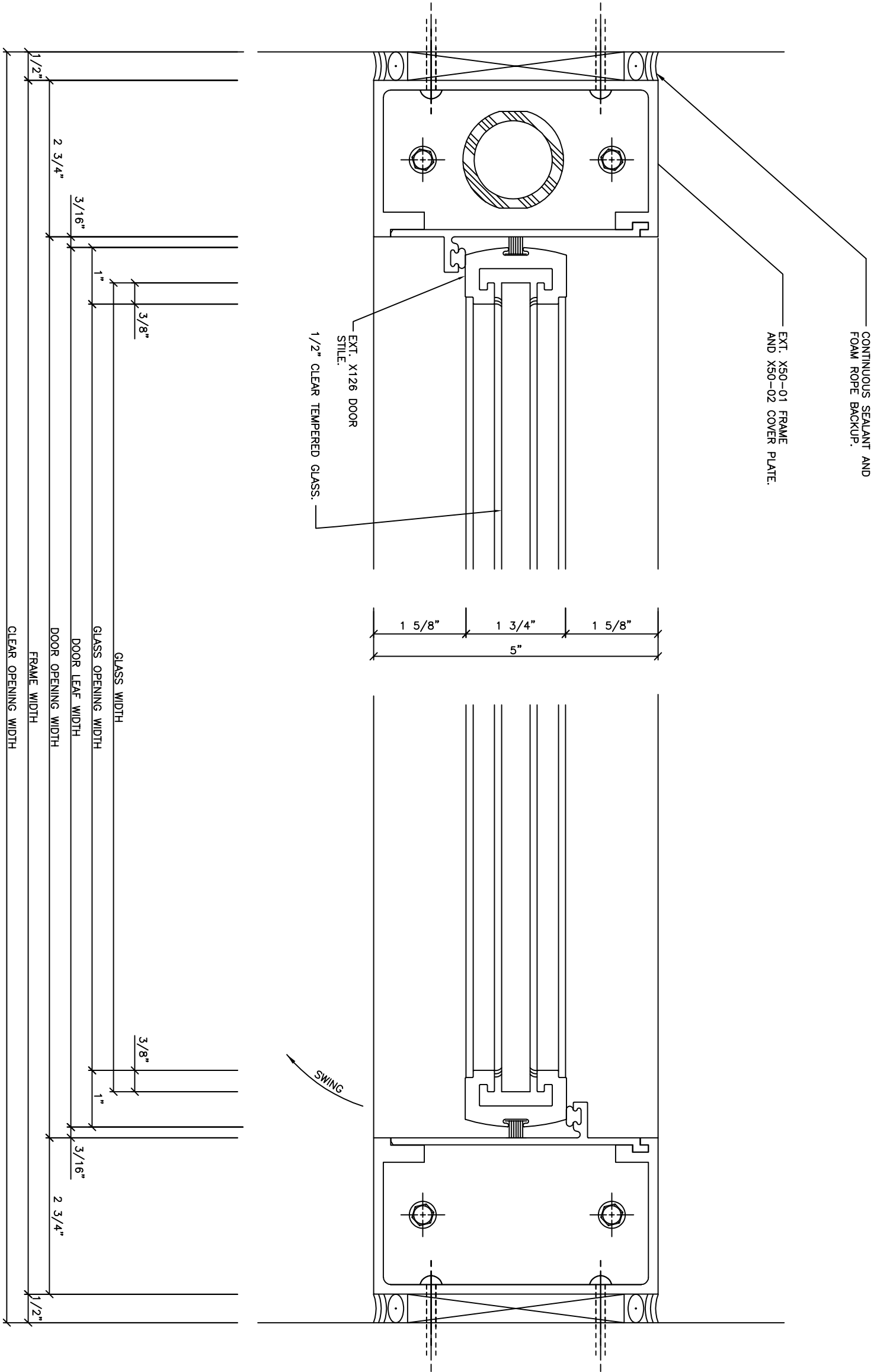
65 RIVERA DRIVE
MARKHAM, ONT.
CANADA, L3R 5J6

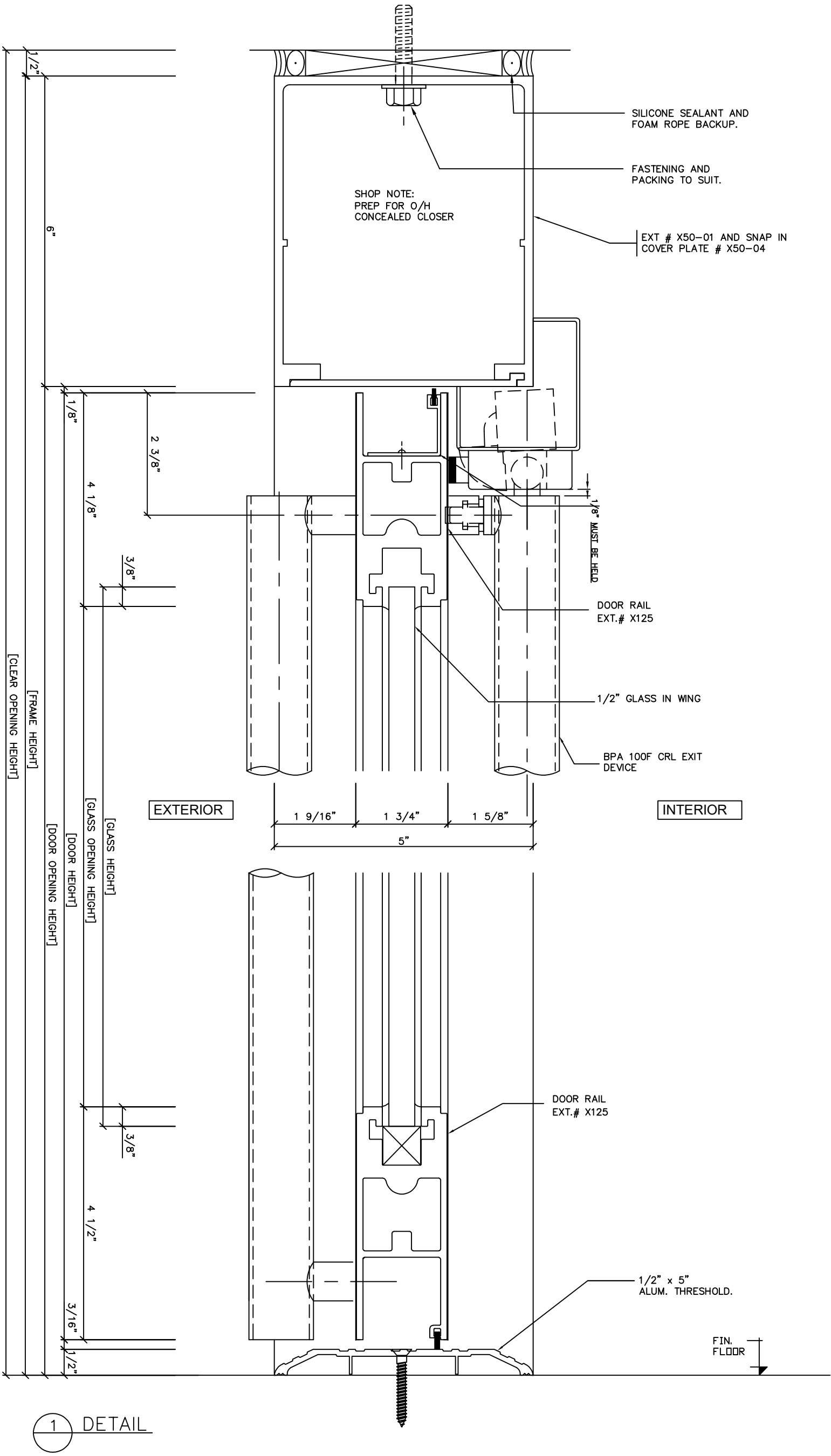
Tel: 888-301-5407
905-944-8005
Fax 905-944-8006

2030 SERIES
BALANCED DOORS
PLAN / DETAILS

BUILDING	?
LOCATION	?
ARCH—ENG.	
CONTRACTOR	?
Drawn by	?
Checked by	?
Scale	
Date	?
Finish	

Job No.	
	?
Dwg. No.	02





Date	REVISIONS	By	Issue
No.	ISSUED	Date	

IMPORTANT NOTICE

C.J. Rush wishes to bring to your attention the following, for which we assume **NO RESPONSIBILITY**:

(1) The use of these drawings by other parties is the sole responsibility of that party as to site conditions, measurements, etc.,

(2) Movement of structures by forces causing mis-alignment and improper function of our product,

(3) Results of glass breakage causing bodily harm through improper use or mischief.

SPECIAL REFERENCE NOTE

Very often the method of manufacturing as shown on these shop drawings are a development of the skills of the company. Any reproduction and or distribution in whole or in part, without expressed or written consent is strictly prohibited.

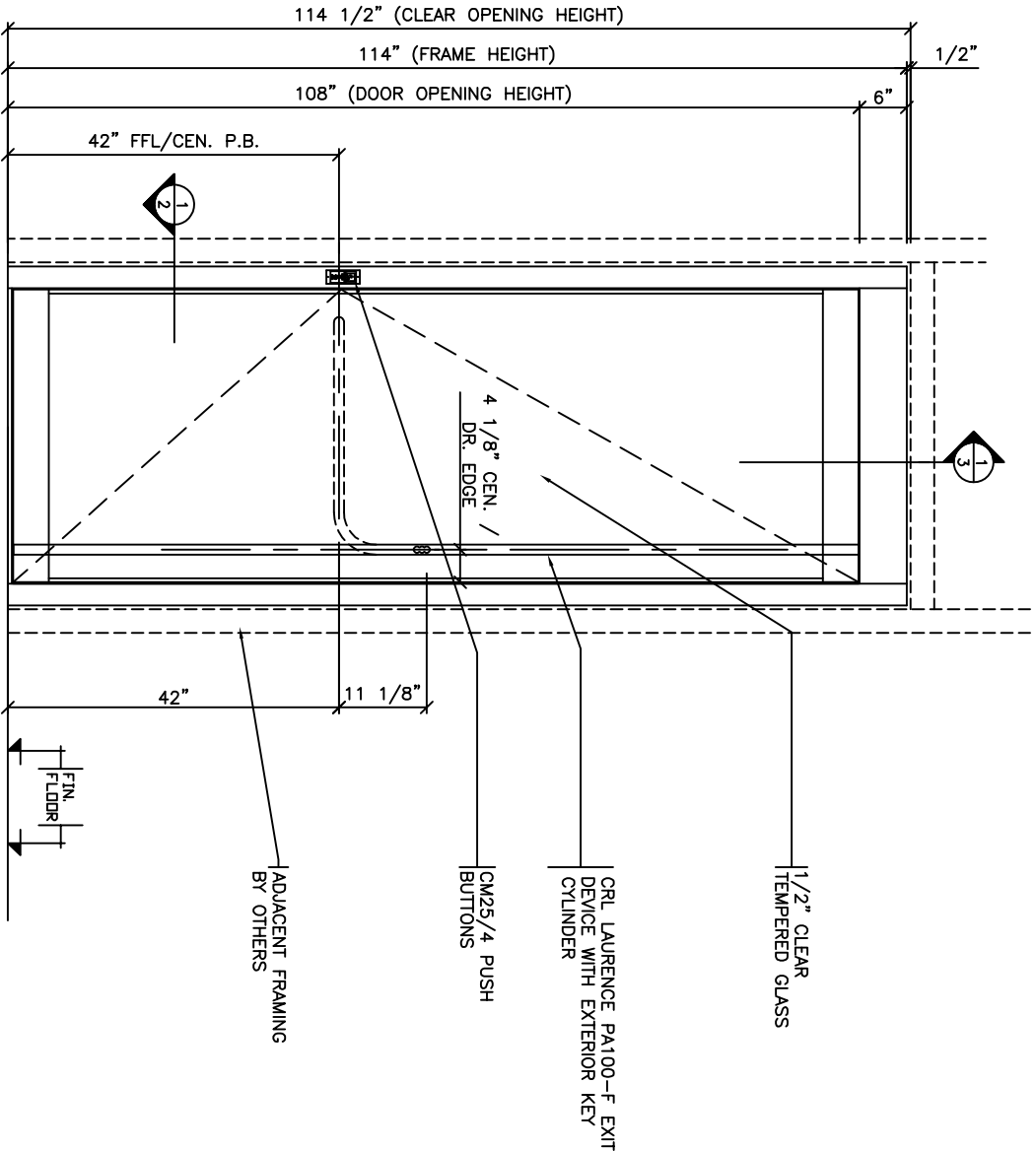
C.J. Rush



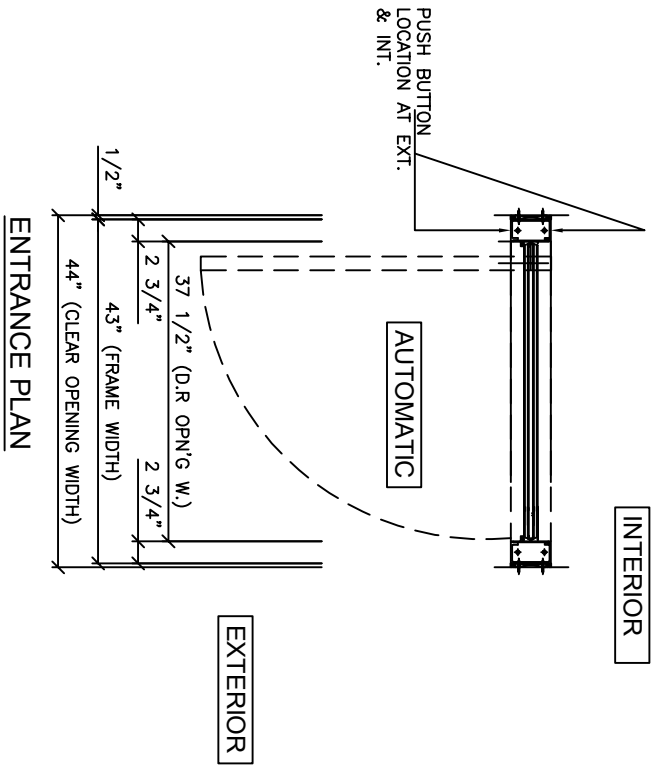
65 RIVERA DRIVE
MARRHAM, ONT.
CANADA, L3R 5J6

Tel: 888-301-5407
905-944-8005
Fax 905-944-8006

2030 SERIES BALANCED DOORS SECTION / DETAILS	
BUILDING ?	
LOCATION ?	
ARCH-ENG.	
CONTRACTOR ?	
Drawn by ?	Job No.
Checked by ?	?
Scale	
Date ?	Dwg. No.
Finish	03



ENTRANCE ELEVATION
1 REQUIRED



SHOP NOTE:

FINISH=

GLASS TINT = CLEAR

DOOR HARDWARE

- STANLEY MAGIC FORCE POWER OPERATOR COMPLETE WITH CENTER PIVOTS & CM25/4 PUSH BUTTONS AT EXT. AND INT.
- CRL PA100F EXIT DEVICE C32D FINISH WITH ELECTRIC STRIKES AND CYLINDER KEY AT EXTERIOR
- STD. WEATHER SWEEPS, FULL PERIMETER.
- 1/2" X 5" ALUMINUM THRESHOLD (MILL FINISH)

Date	REVISIONS	By	Issue
No.	ISSUED		Date
	FOR APPROVAL	?	

IMPORTANT NOTICE

- C.J. Rush wishes to bring to your attention the following, for which we assume NO RESPONSIBILITY:
- (1) The use of these drawings by other parties is the sole responsibility of that party as to site conditions, measurements, etc..
 - (2) Movement of structures by forces causing mis-alignment and improper function of our product.
 - (3) Results of glass breakage causing bodily harm through improper use or mischief.

SPECIAL REFERENCE NOTE

Very often the method of manufacturing as shown on these shop drawings are a development of the skills of the company. Any reproduction and or distribution in whole or in part, without expressed or written consent is strictly prohibited.

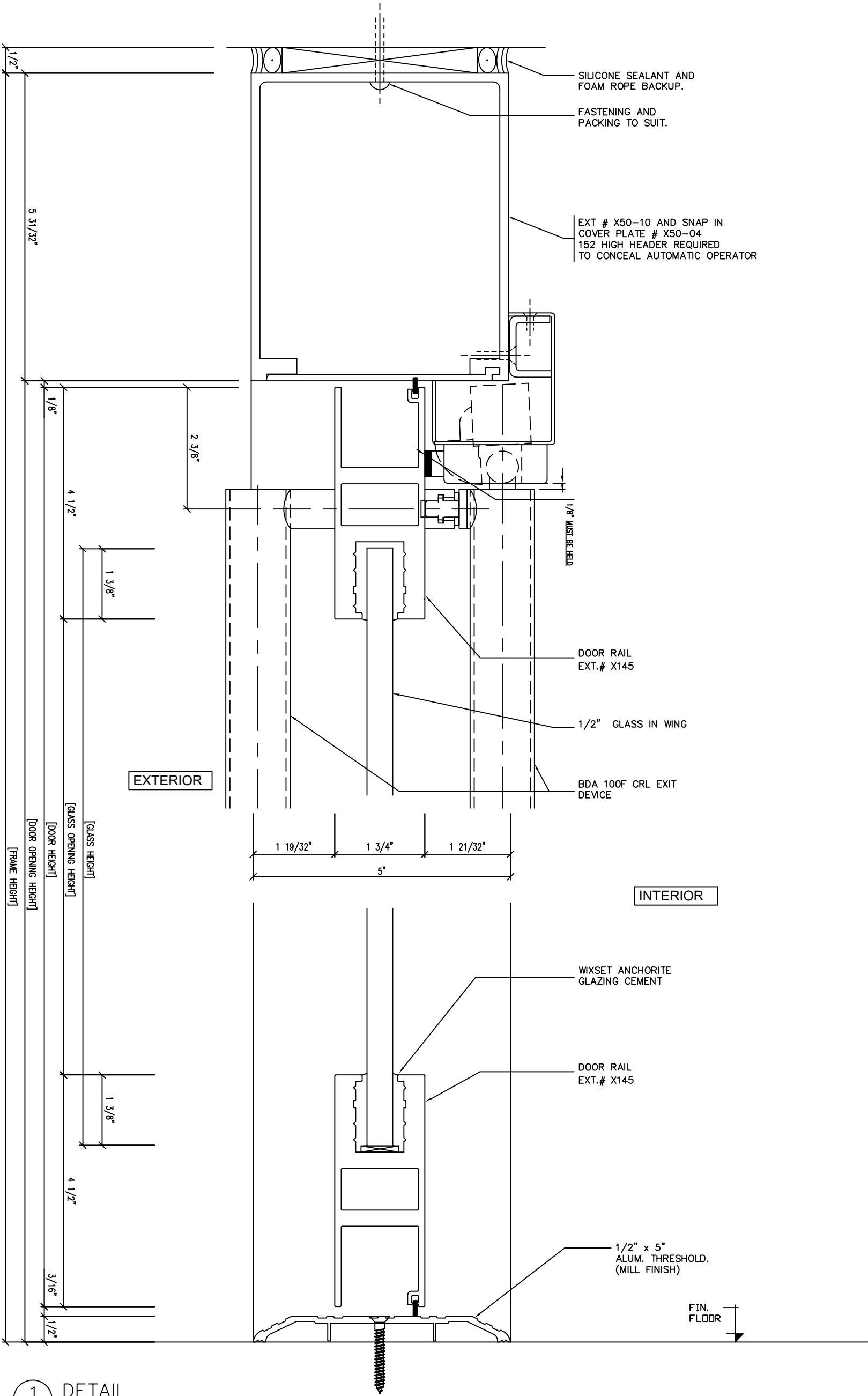
C.J. Rush



65 RIVERA DRIVE
MARKHAM, ONT.
CANADA, L3R 5J6

Tel. 888-301-5407
905-944-8005
Fax 905-944-8006

60 SERIES PIVOT DOOR PLAN / ELEVATION	
BUILDING	
LOCATION	?
ARCH-ENG.	
CONTRACTOR	S.A.I.
Drawn by	KH
Checked by	?
Scale	1"=1'-0"
Date	?
Finish	Dwg. No. 01



Date	REVISIONS	By	Issue
No.	ISSUED	Date	

IMPORTANT NOTICE

C.J. Rush wishes to bring to your attention the following, for which we assume **NO RESPONSIBILITY**:

(1) The use of these drawings by other parties is the sole responsibility of that party as to site conditions, measurements, etc.,

(2) Movement of structures by forces causing mis-alignment and improper function of our product.

(3) Results of glass breakage causing bodily harm through improper use or mischief.

SPECIAL REFERENCE NOTE

Very often the method of manufacturing as shown on these shop drawings are a development of the skills of the company. Any reproduction and or distribution in whole or in part, without expressed or written consent is strictly prohibited.

C.J. Rush

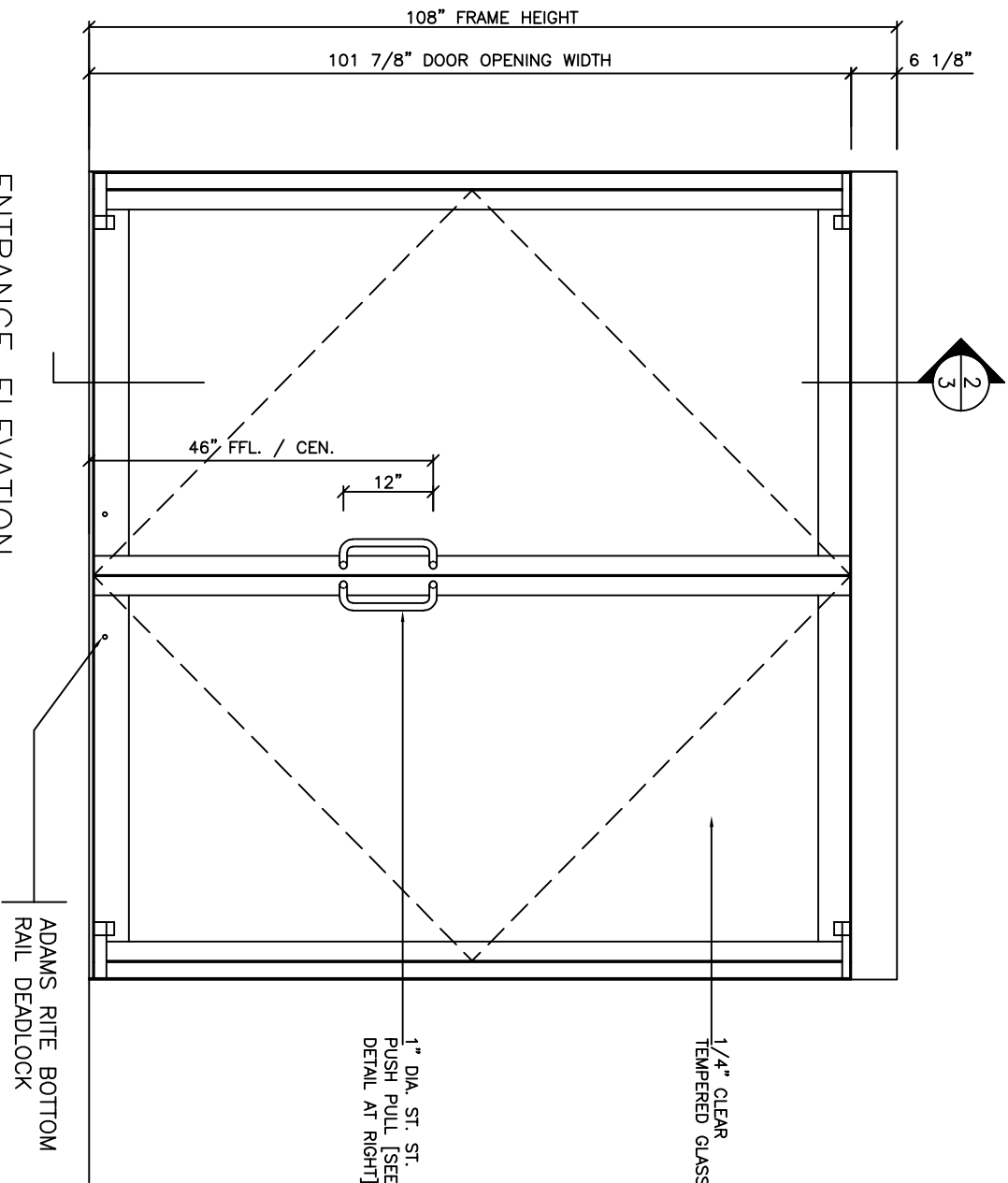


65 RIVERA DRIVE
MARKHAM, ONT.
CANADA, L3R 5J6

Tel: 888-301-5407
905-944-8005
Fax 905-944-8006

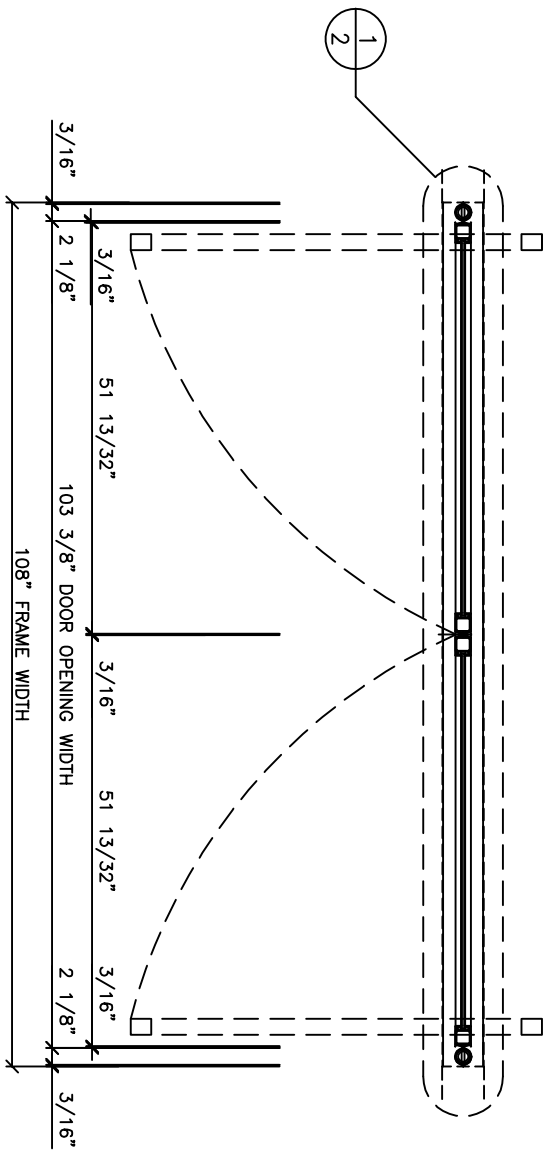
**60 SERIES
PIVOT DOOR
PLAN / DETAILS**

BUILDING	
LOCATION	?
ARCH--ENG.	
CONTRACTOR	S.A.T.
Drawn by	KH
Checked by	?
Scale	
Date	?
Finish	03

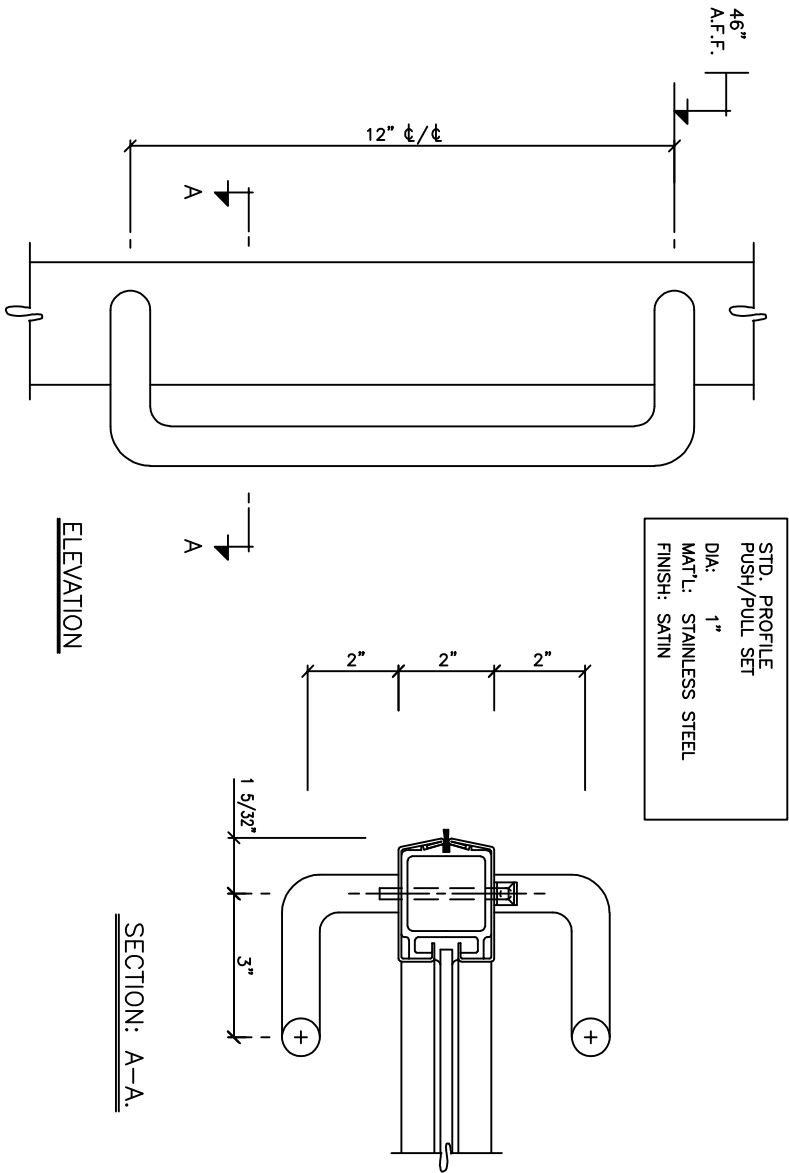


ENTRANCE ELEVATION

1 REQUIRED



ENTRANCE PLAN



DETAIL – PUSH/PULLS

ELEVATION

SECTION: A-A.

SHOP NOTE:

FINISH= ST.ST. #4 (SATIN)

1/4" TEMPERED GLASS= CLEAR

DOOR HARDWARE

– C.J. RUSH TYPE BALANCED DOOR HARDWARE

– OVERHEAD CONCEALED LCN 2030 SERIES CLOSER

– ADAMS RITE MS1850 BOTTOM RAIL DEADLOCK AT BOTH DOORS

– 1" DIA. 12" C/C OFFSET PUSH / PULL [SATIN FINISH]

– 1/2"x5" WIDE ALUMINUM THRESHOLD [MILL FINISH]

– 1 SET WEATHERSTRIPPING

Date	REVISIONS	By	Issue
No.	ISSUED	Date	

IMPORTANT NOTICE

- C.J. Rush wishes to bring to your attention the following, for which we assume NO RESPONSIBILITY:
- (1) The use of these drawings by other parties is the sole responsibility of that party as to site conditions, measurements, etc..
 - (2) Movement of structures by forces causing mis-alignment and improper function of our product.
 - (3) Results of glass breakage causing bodily harm through improper use or mischief.

SPECIAL REFERENCE NOTE

Very often the method of manufacturing as shown on these shop drawings are a development of the skills of the company. Any reproduction and or distribution in whole or in part, without expressed or written consent is strictly prohibited.

C.J. Rush



65 RIVERA DRIVE
MARRHAM, ONT.
CANADA, L3R 5J6

Tel. 888-301-5407
905-944-8005
Fax 905-944-8006

3010 SERIES

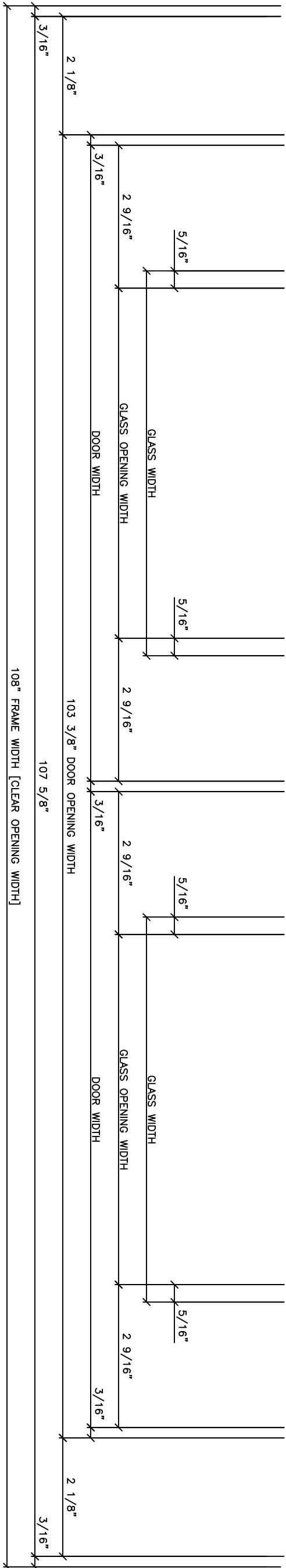
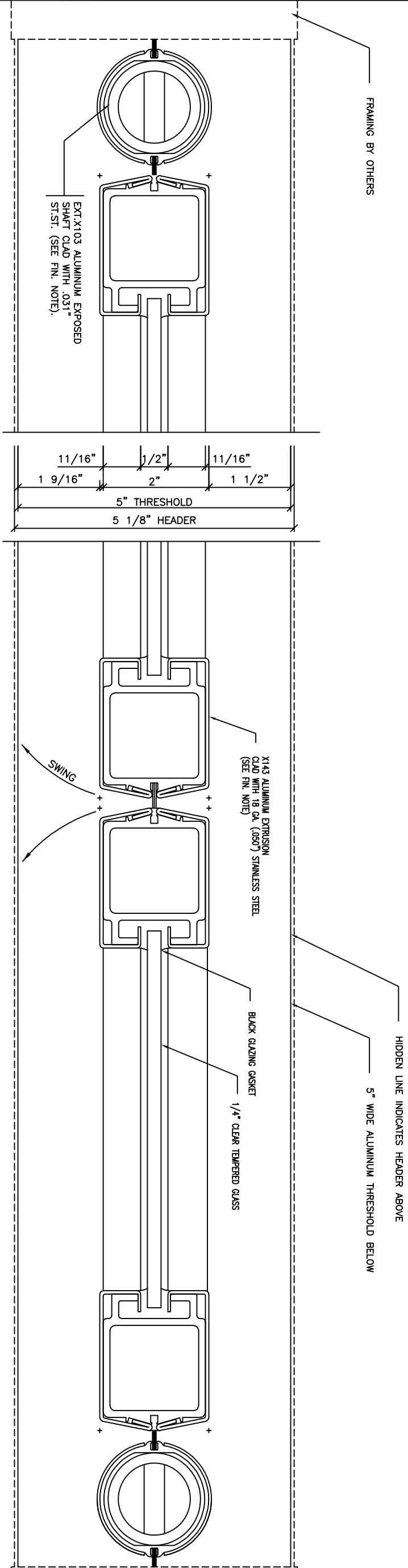
BALANCED DOOR

PLAN / ELEVATION

BUILDING	
LOCATION	
ARCH-ENG.	
CONTRACTOR	
Drawn by	Job No.
Checked by	
Scale	
Date	Dwg. No.
Finish	01

DOOR HEADER WIDTH = CLEAR OPENING WIDTH - 1/16"

INTERIOR



EXTERIOR

1 PLAN DETAIL

Date	REVISIONS	By	Issue
No.	ISSUED	Date	
	FOR APPROVAL	?	

IMPORTANT NOTICE

- C.J. Rush wishes to bring to your attention the following, for which we assume NO RESPONSIBILITY:
- (1) The use of these drawings by other parties is the sole responsibility of that party as to site conditions, measurements, etc..
- (2) Movement of structures by forces causing mis-alignment and improper function of our product.
- (3) Results of glass breakage causing bodily harm through improper use or mischief.

SPECIAL REFERENCE NOTE

Very often the method of manufacturing as shown on these shop drawings are a development of the skills of the company. Any reproduction and or distribution in whole or in part, without expressed or written consent is strictly prohibited.

C.J. Rush

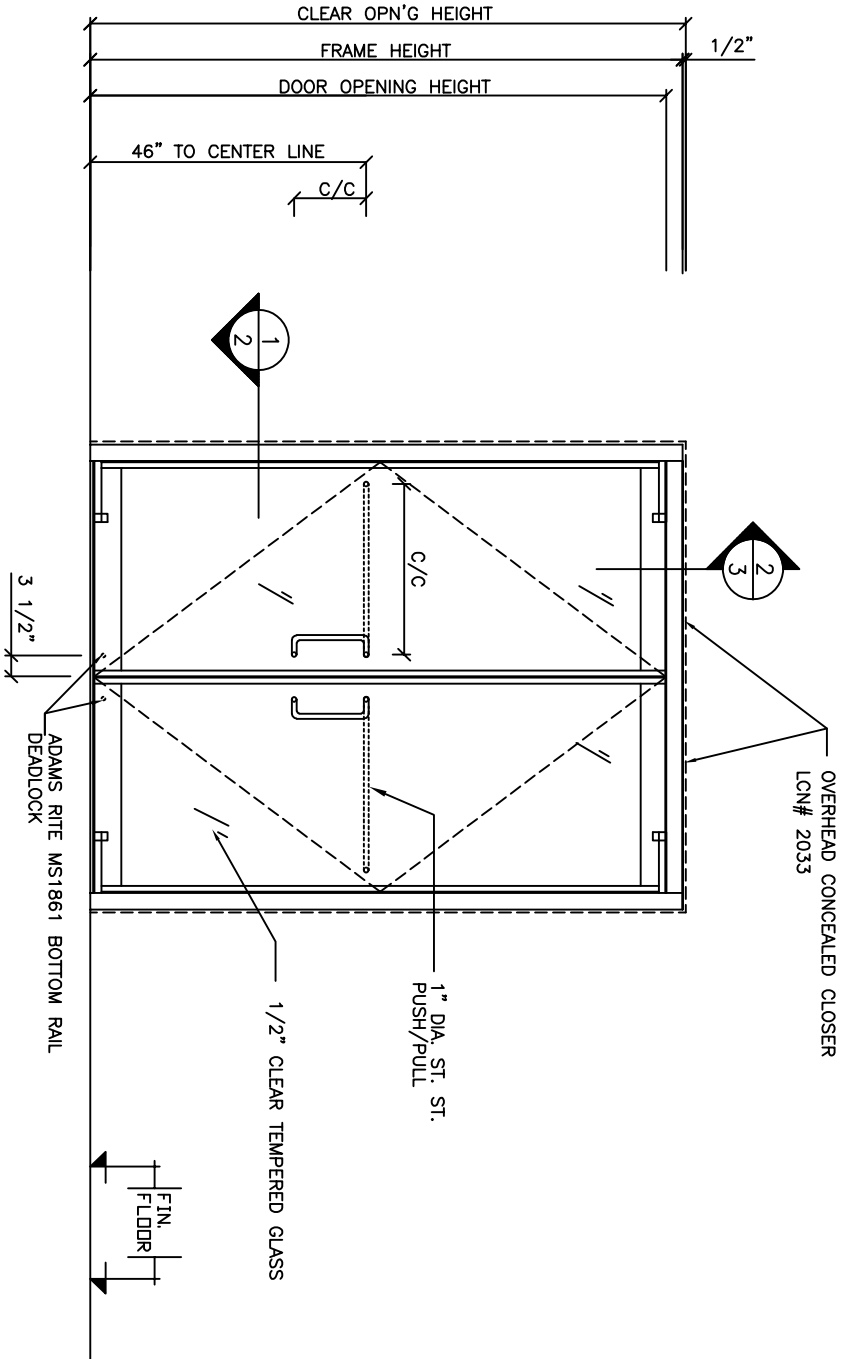


65 RIVERA DRIVE
MARRHAM, ONT.
CANADA, L3R 5J6

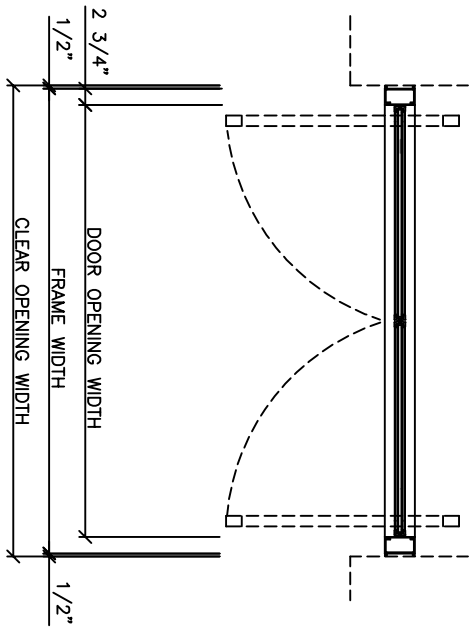
Tel: 888-301-5407
905-944-8005
Fax 905-944-8006

BALANCED DOOR
DETAILS

BUILDING	?
LOCATION	?
ARCH-ENG.	
CONTRACTOR	?
Drawn by KH	Job No.
Checked by	???
Scale FULL SIZE	Dwg. No.
Date ?	02



ENTRANCE ELEVATION
SCALE: 3/4" = 1'-0"
1 REQUIRED



ENTRANCE PLAN
SCALE: 3/4" = 1'-0"

SHOP NOTE:

FINISH= ?
GLASS=?

DOOR HARDWARE

- C.J. RUSH TYPE BALANCED DOOR HARDWARE
- OVERHEAD CONCEALED LCN 2033 SERIES CLOSER
- 1" DIA. ST. ST. OFFSET PUSH/PULL [SATIN FIN.]
- ADAMS RITE MS1861 BOTTOM RAIL DEADLOCK
- WITH CYL. AT EXT., THUMBTURN AT INT. [FIN. TO MATCH DOOR]
- 1/2"x5" EXTRUDED ALUM. THRESHOLD [MILL FIN.]
- FULL PERIMETER C. J. RUSH STD. WEATHERSTRIPPING

Date	REVISIONS	By	Issue
No.	ISSUED		
	FOR APPROVAL	?	Date

IMPORTANT NOTICE

- C.J. Rush wishes to bring to your attention the following, for which we assume NO RESPONSIBILITY:
- (1) The use of these drawings by other parties is the sole responsibility of that party as to site conditions, measurements, etc.,
 - (2) Movement of structures by forces causing mis-alignment and improper function of our product.
 - (3) Results of glass breakage causing bodily harm through improper use or mischief.
- SPECIAL REFERENCE NOTE
- Very often the method of manufacturing as shown on these shop drawings are a development of the skills of the company. Any reproduction and or distribution in whole or in part, without expressed or written consent is strictly prohibited.
- C.J. Rush

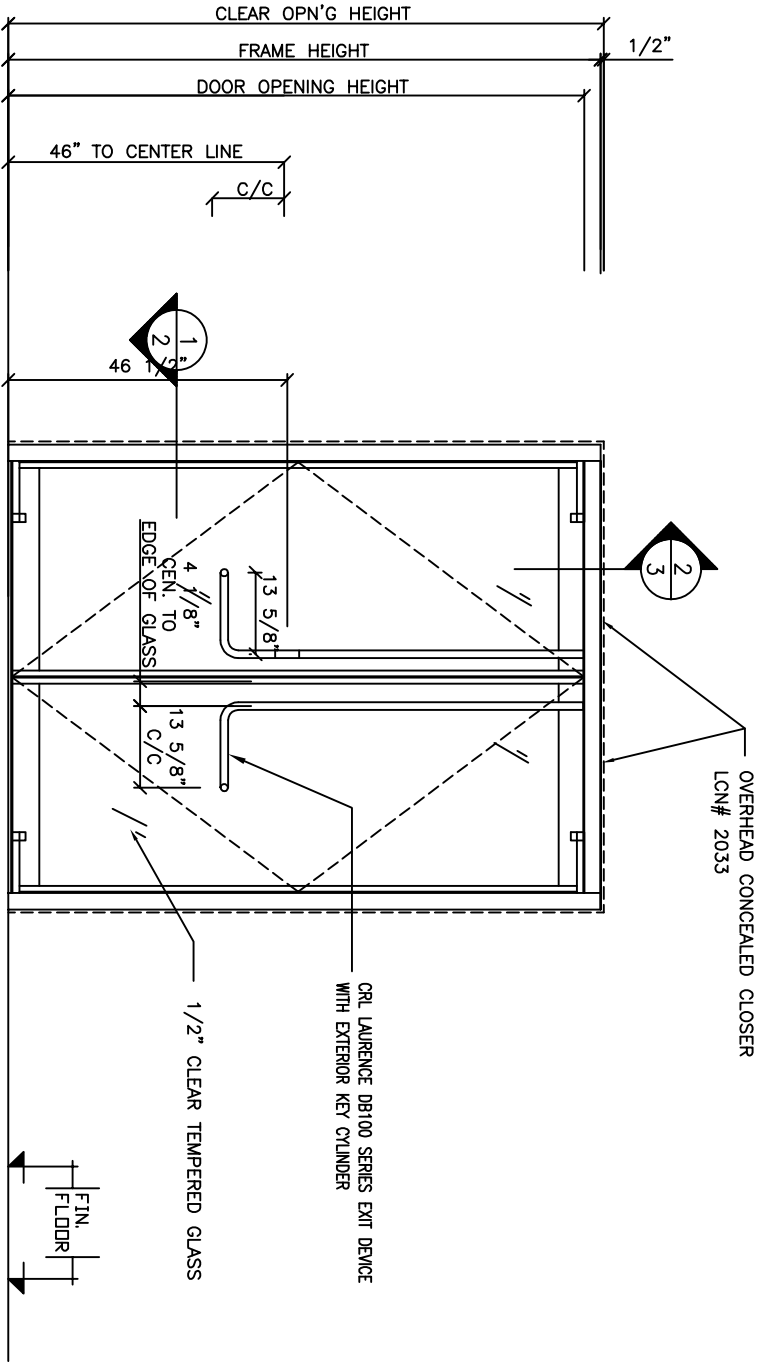


65 RIVERA DRIVE
MARKHAM, ONT.
CANADA, L3R 5J6

Tel. 888-301-5407
905-944-8005
Fax 905-944-8006

3030 SERIES BALANCED DOOR
PLAN / ELEVATION

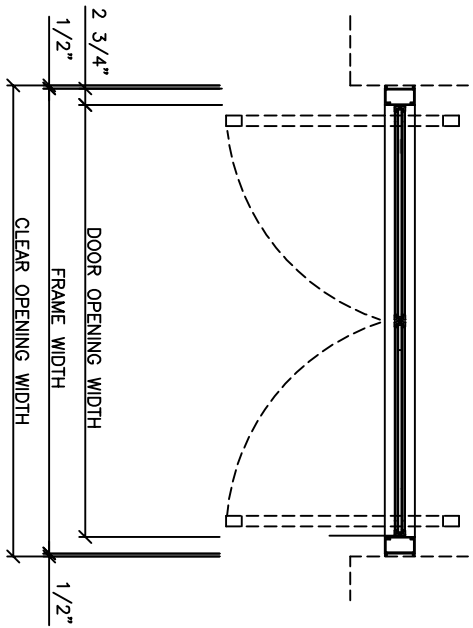
BUILDING ?	
LOCATION ?	
ARCH-ENG.	
CONTRACTOR ?	
Drawn by ?	Job No.
Checked by	?
Scale 3/4"=1'-0"	
Date ?	Dwg. No.
Finish AS SHOWN	01



ENTRANCE ELEVATION

SCALE: 3/4" = 1'-0"

1 REQUIRED



ENTRANCE PLAN

SCALE: 3/4" = 1'-0"

SHOP NOTE:

FINISH= ?

GLASS=?

DOOR HARDWARE

- C.J. RUSH TYPE BALANCED DOOR HARDWARE
- OVERHEAD CONCEALED LCN 2033 SERIES CLOSER
- CRL LAURENCE DB100 SERIES EXIT DEVICE WITH EXTERIOR KEY CYLINDER [SATIN FIN.]
- 1/2"x5" EXTRUDED ALUM. THRESHOLD [MILL FIN.]
- FULL PERIMETER C. J. RUSH STD. WEATHERSTRIPPING

Date	REVISIONS	By	Issue
No.	ISSUED		
	FOR APPROVAL	?	Date

IMPORTANT NOTICE

C.J. Rush wishes to bring to your attention the following, for which we assume NO RESPONSIBILITY:

- (1) The use of these drawings by other parties is the sole responsibility of that party as to site conditions, measurements, etc..
- (2) Movement of structures by forces causing mis-alignment and improper function of our product.
- (3) Results of glass breakage causing bodily harm through improper use or mischief.

SPECIAL REFERENCE NOTE

Very often the method of manufacturing as shown on these shop drawings are a development of the skills of the company. Any reproduction and or distribution in whole or in part, without expressed or written consent is strictly prohibited.

C.J. Rush



65 RIVERA DRIVE
MARKHAM, ONT.
CANADA, L3R 5J6

Tel. 888-301-5407
905-944-8005
Fax 905-944-8006

3030 SERIES BALANCED DOOR
PLAN / ELEVATION

BUILDING ?	
LOCATION ?	
ARCH-ENG.	
CONTRACTOR ?	
Drawn by ?	Job No.
Checked by	?
Scale 3/4"=1'-0"	
Date ?	Dwg. No.
Finish AS SHOWN	01

Date	REVISIONS	By	Issue
No.	ISSUED	Date	

IMPORTANT NOTICE

- C.J. Rush wishes to bring to your attention the following, for which we assume NO RESPONSIBILITY:
- (1) The use of these drawings by other parties is the sole responsibility of that party as to site conditions, measurements, etc..
 - (2) Movement of structures by forces causing mis-alignment and improper function of our product.
 - (3) Results of glass breakage causing bodily harm through improper use or mischief.

SPECIAL REFERENCE NOTE

Very often the method of manufacturing as shown on these shop drawings are a development of the skills of the company. Any reproduction and or distribution in whole or in part, without expressed or written consent is strictly prohibited.

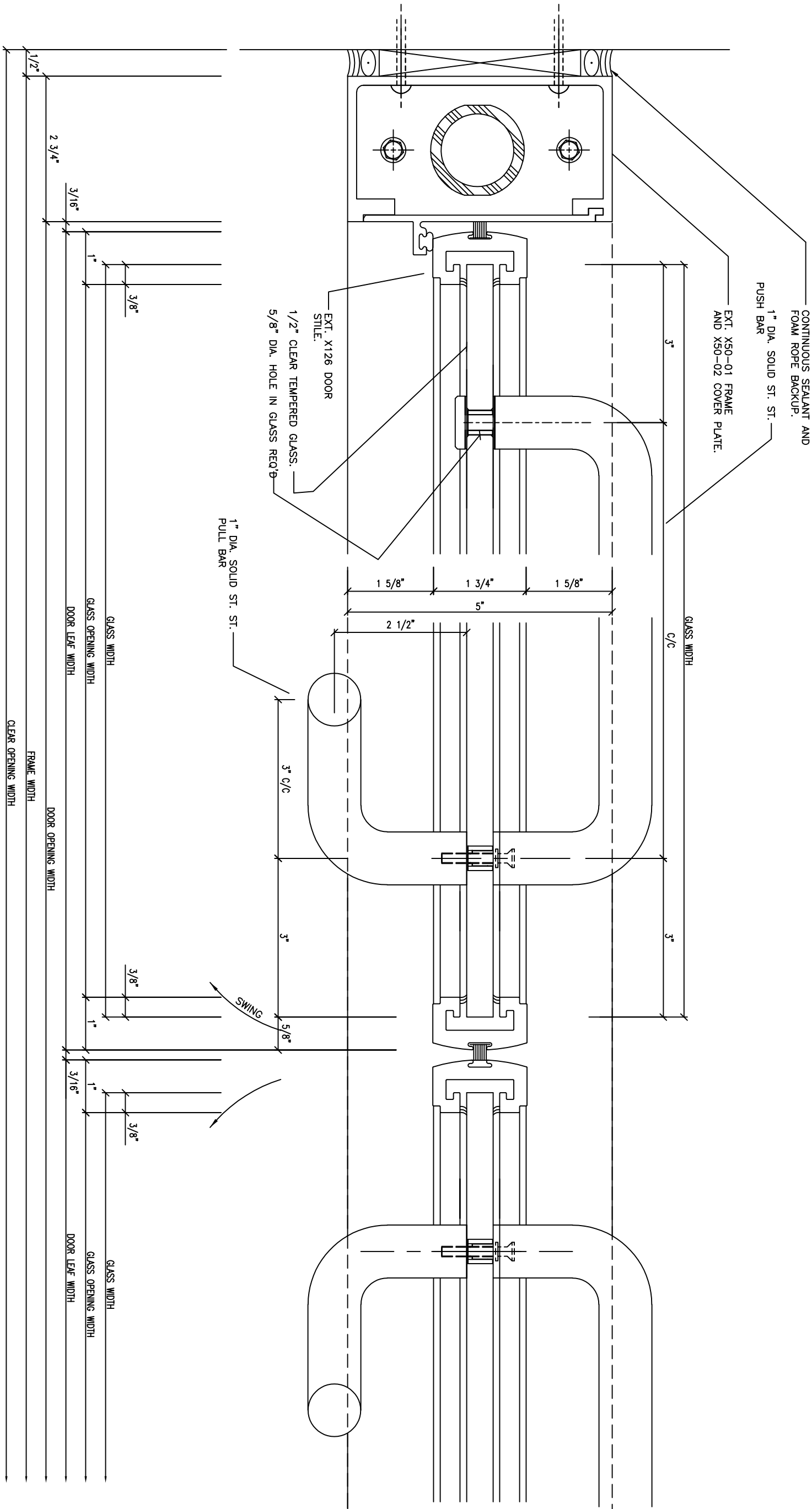
C.J. Rush

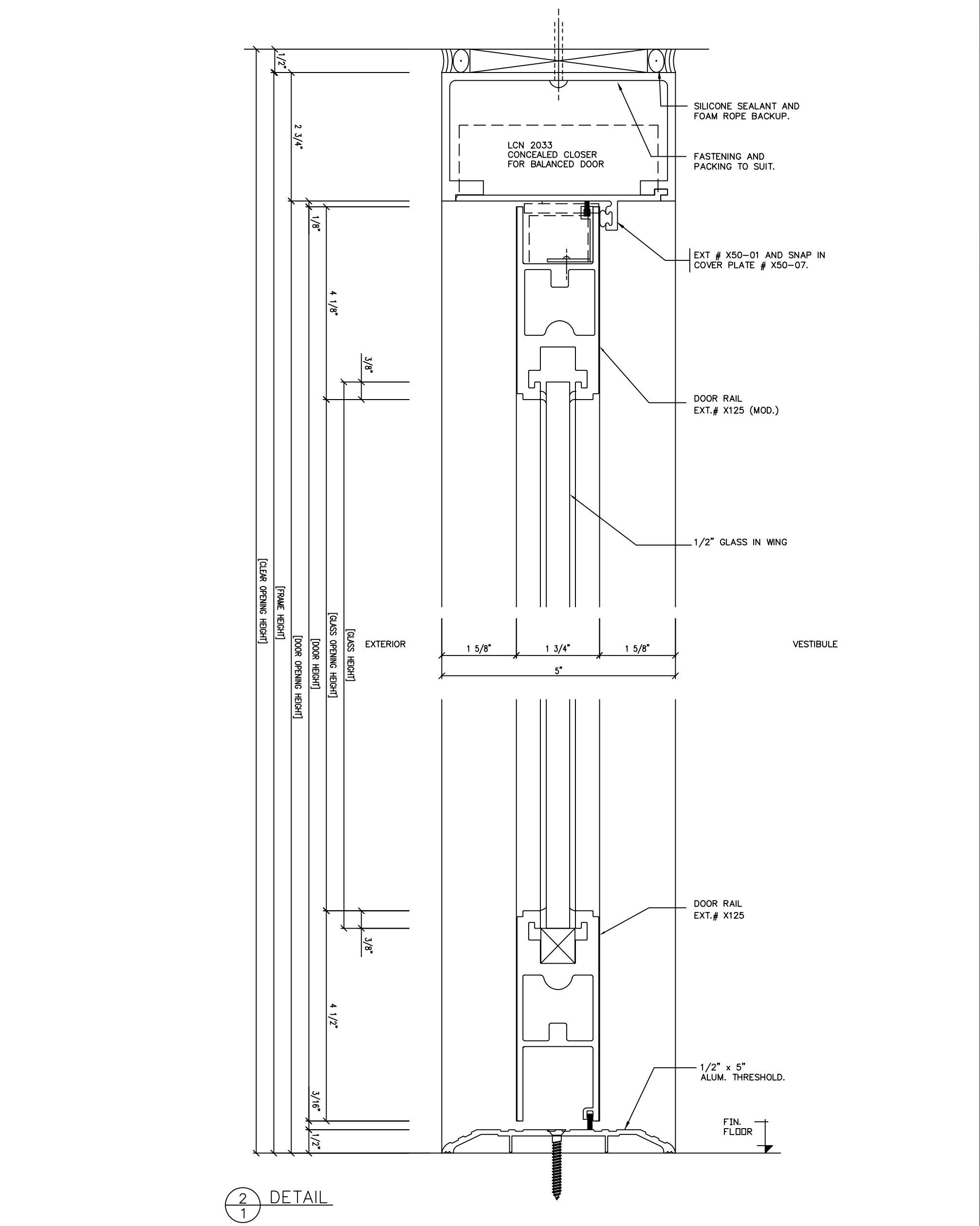


65 RIVERA DRIVE
MARKHAM, ONT.
CANADA, L3R 5J6

Tel: 888-301-5407
905-944-8005
Fax 905-944-8006

BUILDING	?
LOCATION	?
ARCH-ENG.	
CONTRACTOR	?
Drawn by	?
Checked by	???
Scale	FULL SIZE
Date	?
Finish	02





Date	REVISIONS	By	Issue
No.	ISSUED		
	FOR APPROVAL	?	Date

IMPORTANT NOTICE

C.J. Rush wishes to bring to your attention the following, for which we assume NO RESPONSIBILITY:

(1) The use of these drawings by other parties is the sole responsibility of that party as to site conditions, measurements, etc.,

(2) Movement of structures by forces causing mis-alignment and improper function of our product.

(3) Results of glass breakage causing bodily harm through improper use or mischief.

SPECIAL REFERENCE NOTE

Very often the method of manufacturing as shown on these shop drawings are a development of the skills of the company. Any reproduction and or distribution in whole or in part, without expressed or written consent is strictly prohibited.

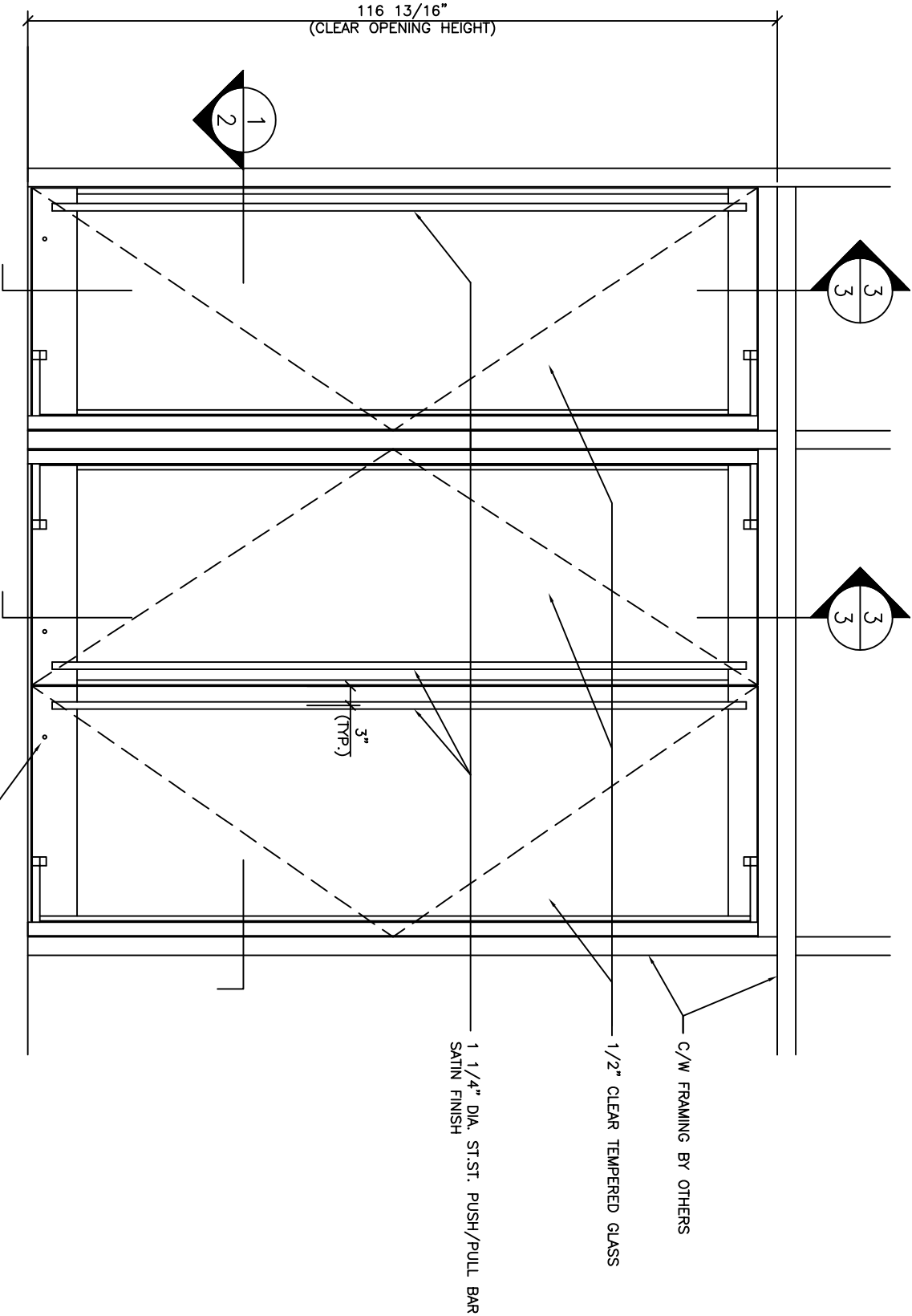
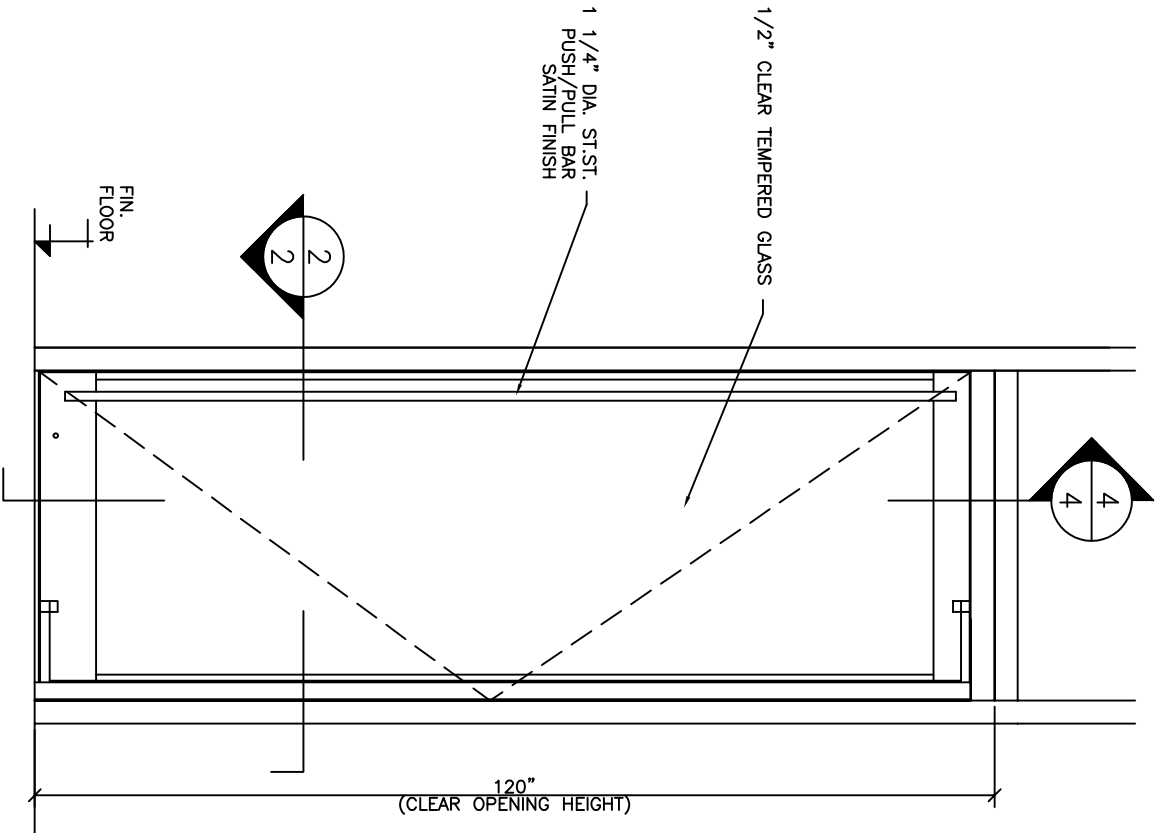
C.J. Rush



65 RIVERA DRIVE
MARKHAM, ONT.
CANADA, L3R 5J6

Tel: 888-301-5407
905-944-8005
Fax 905-944-8006

BALANCED DOOR SECTION-DETAILS	
BUILDING	?
LOCATION	?
ARCH-ENG.	
CONTRACTOR	?
Drawn by	?
Checked by	???
Scale	FULL SIZE
Date	?
Finish	03



INTERIOR

INTERIOR

ELEVATION

ELEVATION

EXTERIOR

PLAN

EXTERIOR

PLAN

SHOP NOTE:

FINISH= CHAMPAGNE ANODIZED
BY DEPENDABLE ANODIZING
1/2" TEMPERED GLASS= CLEAR

DOOR HARDWARE

- C.J. RUSH TYPE BALANCED DOOR HARDWARE
- OVERHEAD CONCEALED LCN 2030 SERIES CLOSER
- ADAMS RITE 1830
- PUSH-PULLS - CUSTOM - AS SHOWN
- 1 SET WEATHERSTRIPPING

IMPORTANT NOTICE

- C.J. Rush wishes to bring to your attention the following, for which we assume NO RESPONSIBILITY:
- (1) The use of these drawings by other parties is the sole responsibility of that party as to site conditions, measurements, etc.,
 - (2) Movement of structures by forces causing mis-alignment and improper function of our product.
 - (3) Results of glass breakage causing bodily harm through improper use or mischief.

SPECIAL REFERENCE NOTE

Very often the method of manufacturing as shown on these shop drawings are a development of the skills of the company. Any reproduction and or distribution in whole or in part, without expressed or written consent is strictly prohibited.

C.J. Rush



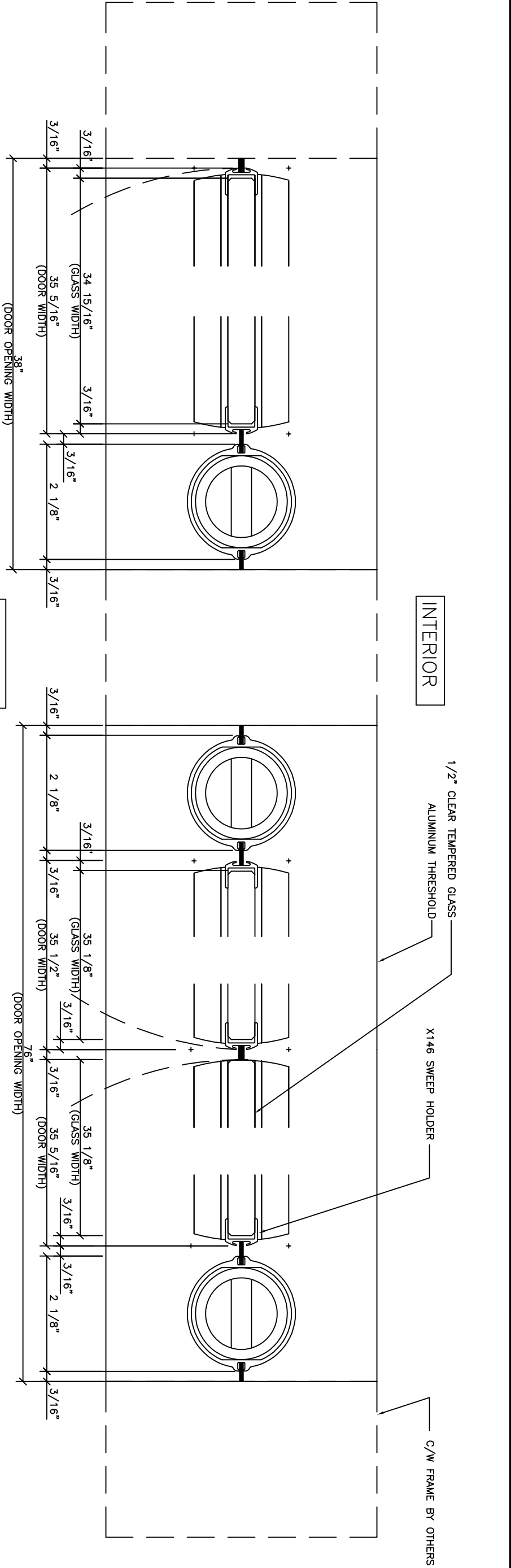
65 RIVERA DRIVE
MARTHA, ONT.
CANADA, L3R 5J6

Tel: 888-301-5407
905-944-8005
Fax 905-944-8006

EXTERIOR BALANCED
DOORS
PLAN/ELEVATION

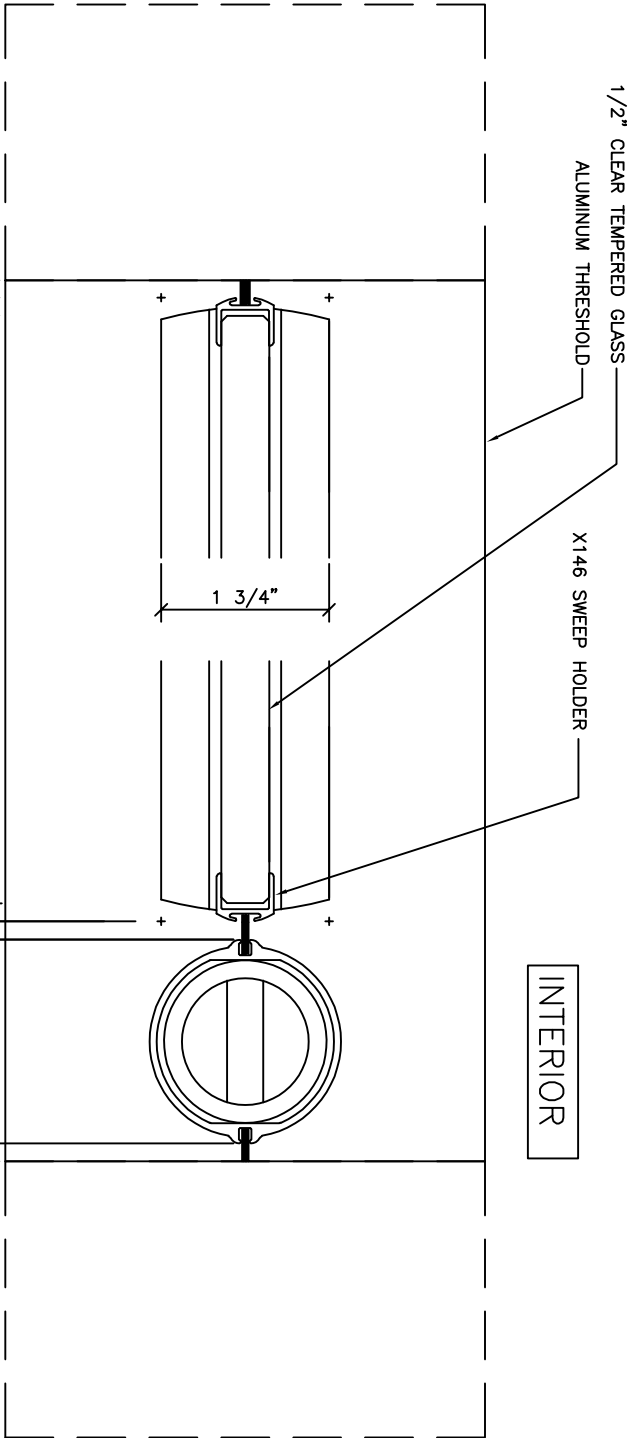
BUILDING:	?
LOCATION:	?
ARCH-ENG.:	?
CONTRACTOR:	
Drawn by:	?
Checked by:	?
Scale:	1"=1'-0"
Date:	?
Finish:	AS SHOWN

Date	REVISIONS	By	Issue
No.	ISSUED		
	FOR APPROVAL	?	Date



INTERIOR

1
1 HORIZONTAL SECTION



INTERIOR

EXTERIOR

2
1 HORIZONTAL SECTION

Date	REVISIONS	By	Issue
No.	ISSUED	Date	

IMPORTANT NOTICE

- C.J. Rush wishes to bring to your attention the following, for which we assume NO RESPONSIBILITY:
- (1) The use of these drawings by other parties is the sole responsibility of that party as to site conditions, measurements, etc.,
 - (2) Movement of structures by forces causing misalignment and improper function of our product.
 - (3) Results of glass breakage causing bodily harm through improper use or mischief.

SPECIAL REFERENCE NOTE

Very often the method of manufacturing as shown on these shop drawings are a development of the skills of the company. Any reproduction and or distribution in whole or in part, without expressed or written consent is strictly prohibited.

C.J. Rush



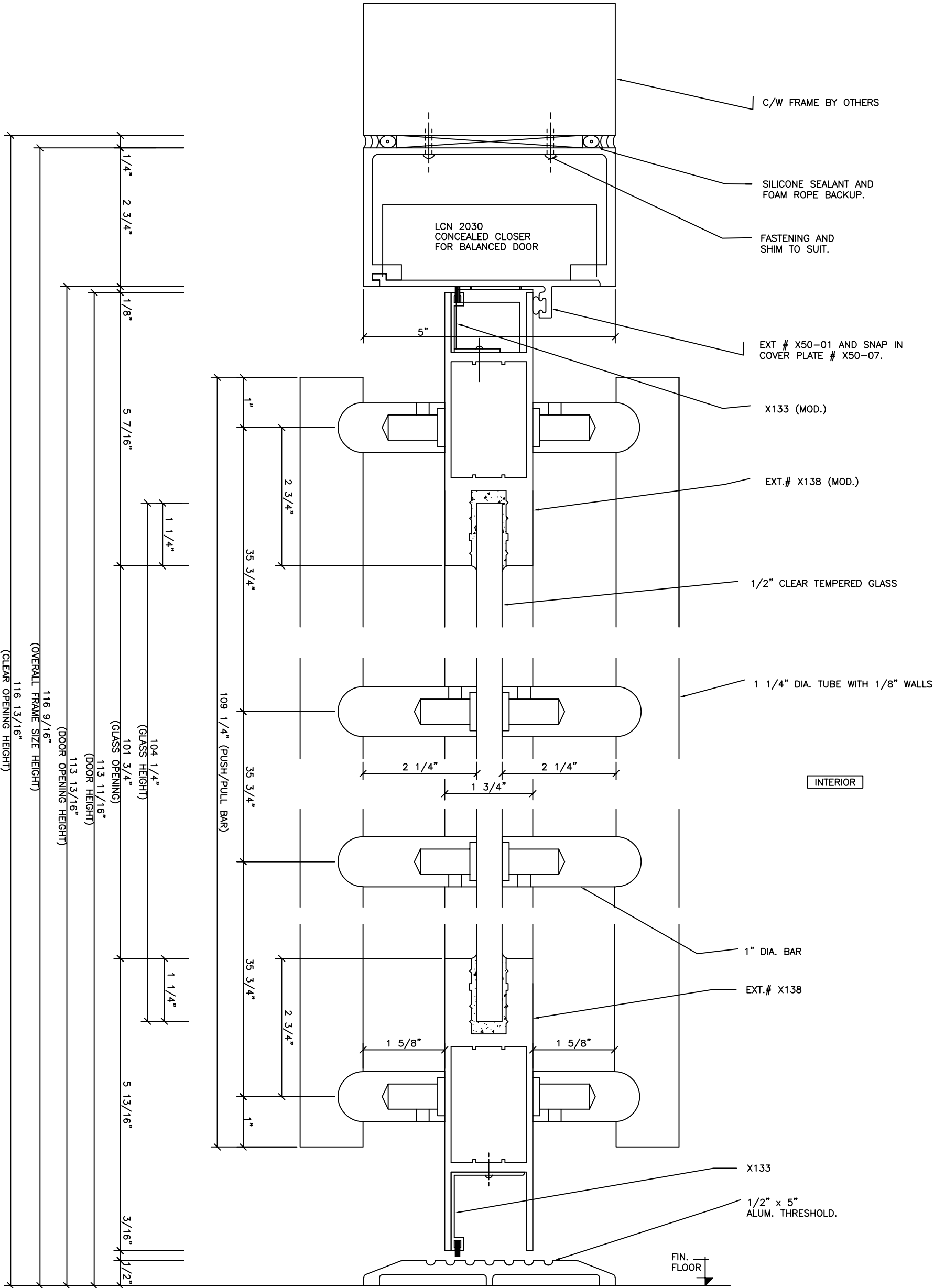
65 RIVERA DRIVE
MARKHAM, ONT.
CANADA, L3R 5J6

Tel: 888-301-5407
905-944-8005
Fax 905-944-8006

EXTERIOR BALANCED
DOORS
HORIZONTAL SECTION

BUILDING:	?
LOCATION:	?
ARCH-ENG.:	?
CONTRACTOR:	
Drawn by:	?
Checked by:	?
Scale:	FULL SIZE
Date:	?
Finish:	AS SHOWN

Dwg. No.
002



3
1

VERTICAL SECTION

Date	REVISIONS	By	Issue
No.	ISSUED	Date	

- IMPORTANT NOTICE**
- C.J. Rush wishes to bring to your attention the following, for which we assume **NO RESPONSIBILITY**:
- (1) The use of these drawings by other parties is the sole responsibility of that party as to site conditions, measurements, etc..
 - (2) Movement of structures by forces causing mis-alignment and improper function of our product.
 - (3) Results of glass breakage causing bodily harm through improper use or mischief.

SPECIAL REFERENCE NOTE

Very often the method of manufacturing as shown on these shop drawings are a development of the skills of the company. Any reproduction and or distribution in whole or in part, without expressed or written consent is strictly prohibited.

C.J. Rush



65 RIVERA DRIVE
MARKHAM, ONT.
CANADA, L3R 5J6

Tel: 888-301-5407
905-944-8005
Fax 905-944-8006

EXTERIOR BALANCED DOORS	
VERTICAL SECTION	
BUILDING:	?
LOCATION:	?
ARCH-ENG.:	?
CONTRACTOR:	
Drawn by:	?
Checked by:	?
Scale:	FULL SIZE
Date:	?
Finish:	AS SHOWN
Dwg. No.	003

