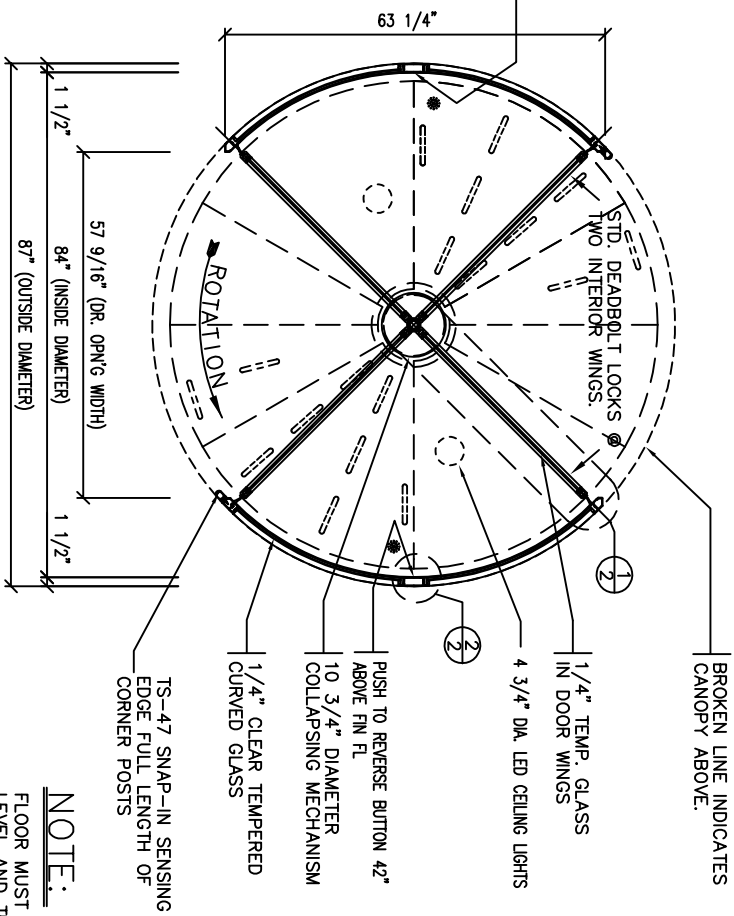


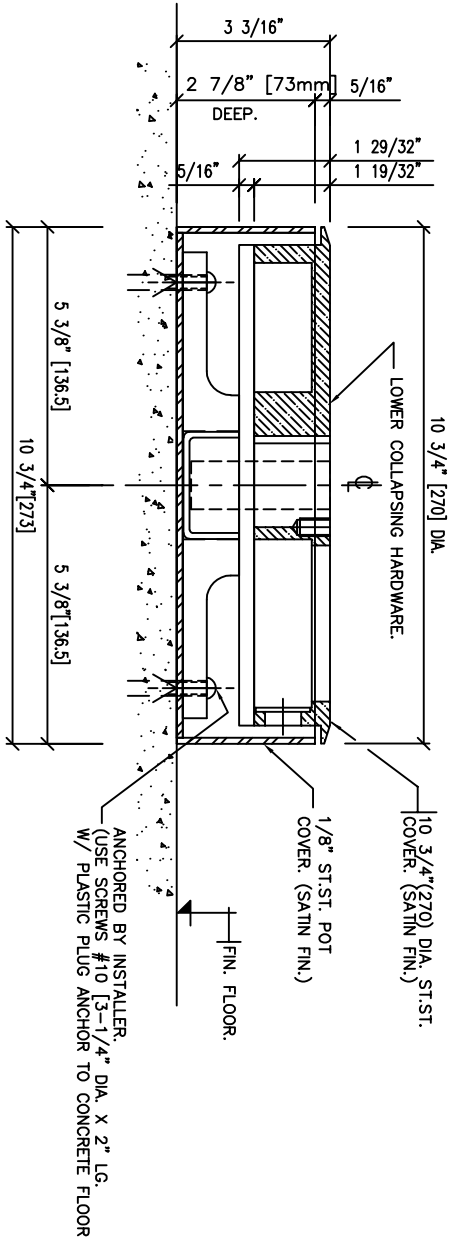
ENTRANCE ELEVATION

NOTE:
- SECURITY AUTHORIZATION
DEVICE BY OTHERS
- FREE FLOW EXITING



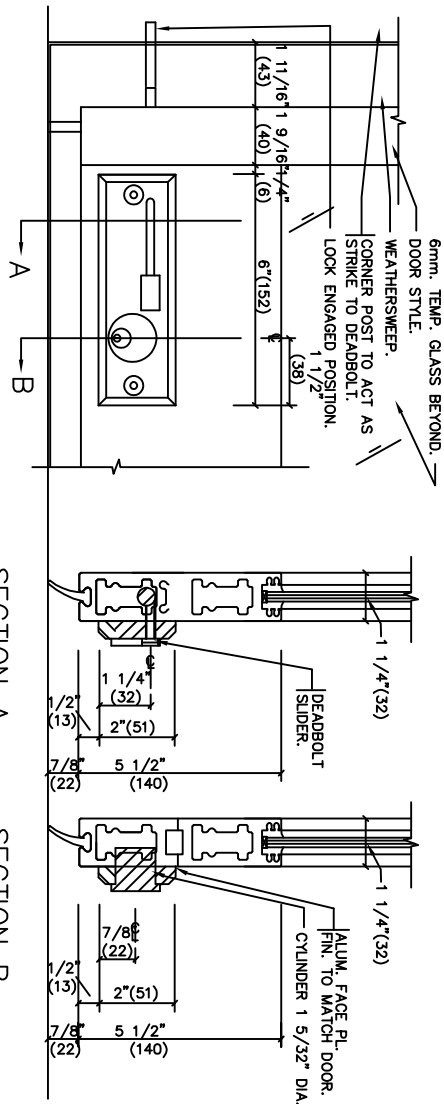
ENTRANCE PLAN

ANTI-TAILGATING IN AND OUT



DETAIL - 4 WING EXPOSED LOWER COLLAPSING MECH.

NOT TO SCALE



STD. DEADBOLT DETAILS

SCALE: NONE

NOTE:
PROVIDE 110 V, 60HZ, 15 AMP. POWER
SUPPLY TO REVOLVING DOOR CANOPY

NOTE:
FINISHED FLOOR MUST BE
TRUE AND LEVEL THROUGHOUT
REVOLVING DOOR AREA.

SHOP NOTE:
- AUTOMATIC SECURITY REVOLVING DOOR
WITH COLLAPSING DOOR WING FUNCTION
AND ANTI-TAILGATING

SHOP NOTE:
FINISH=
CURVED GLASS TINT= CLEAR
DR. WG. GLASS TINT= CLEAR

Date	REVISIONS	By	Issue
No.	ISSUED	Date	
	FOR APPROVAL	APR 16/19	

IMPORTANT NOTICE

C.J. Rush wishes to bring to your attention the following, for which we assume NO RESPONSIBILITY:
(1) The use of these drawings by other parties is the sole responsibility of that party as to site conditions, measurements, etc..
(2) Movement of structures by forces causing mis-alignment and improper function of our product.
(3) Results of glass breakage causing bodily harm through improper use or mischief.

SPECIAL REFERENCE NOTE

Very often, the method of manufacturing as shown on these shop drawings are a development of the skills of the company. Any reproduction and/or distribution in whole or in part, without expressed or written consent is strictly prohibited.

C.J. Rush



65 RIVERA DRIVE
MARKHAM, ONT.
CANADA, L3R 3J6
Tel. 888-301-5407
905-944-8005
Fax 905-944-8006

SECURITY DOOR
PLAN/ELEV/DETAILS

BUILDING	
LOCATION	
ARCH-ENG.	
CONTRACTOR S.A.T.	
Drawn by ET	Job No. ---
Checked by	
Scale	
Date APR 15/19	Dwg. No. 01
Finish	

Date	REVISIONS	By	Issue
No.	ISSUED	Date	

IMPORTANT NOTICE

- C.J. Rush wishes to bring to your attention the following, for which we assume NO RESPONSIBILITY:
- (1) The use of these drawings by other parties is the sole responsibility of that party as to site conditions, measurements, etc.,
 - (2) Movement of structures by forces causing mis-alignment and improper function of our product.
 - (3) Results of glass breakage causing bodily harm through improper use or mischief.

SPECIAL REFERENCE NOTE

Very often the method of manufacturing as shown on these shop drawings are a development of the skills of the company. Any reproduction and or distribution in whole or in part, without expressed or written consent is strictly prohibited.

C.J. Rush

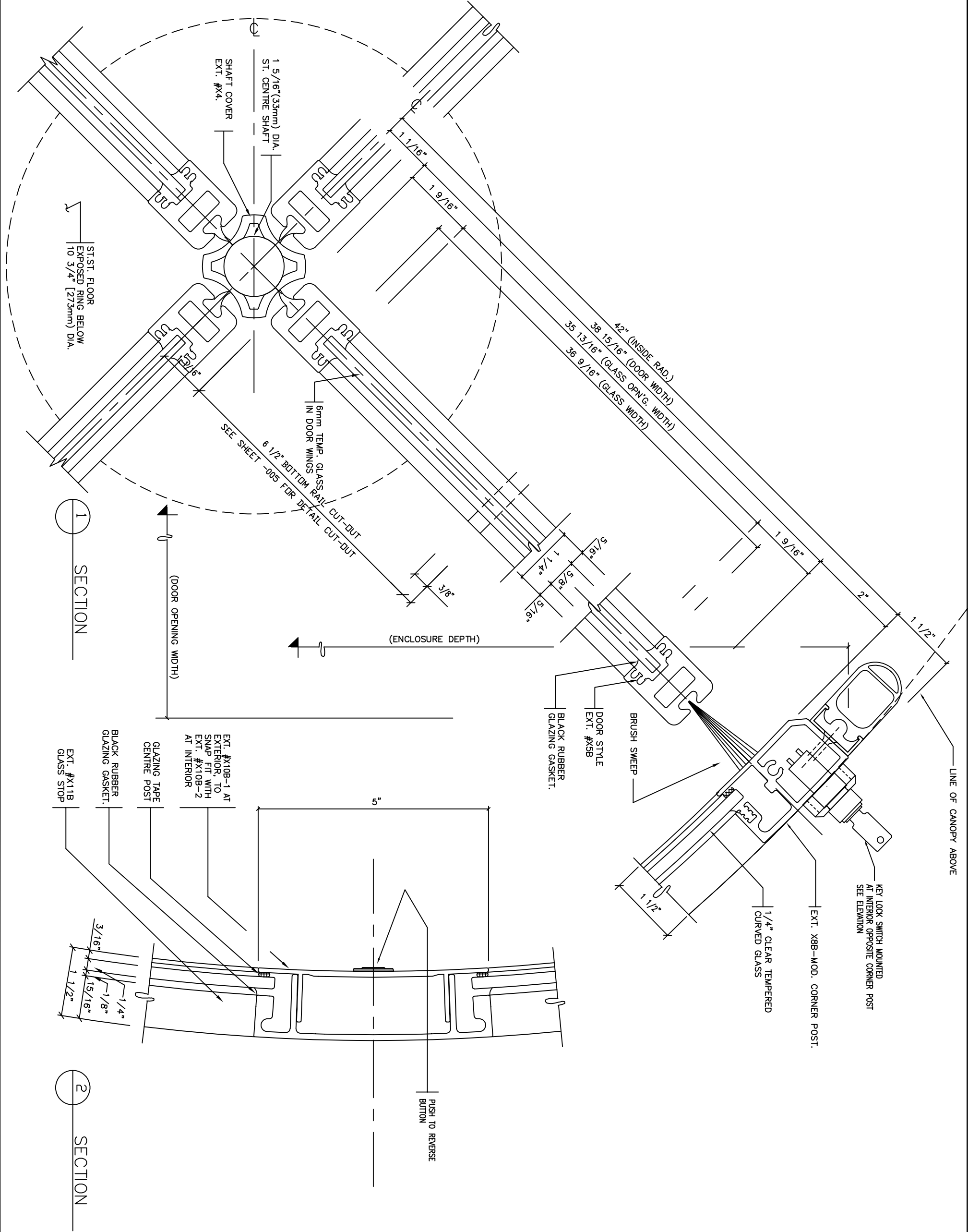


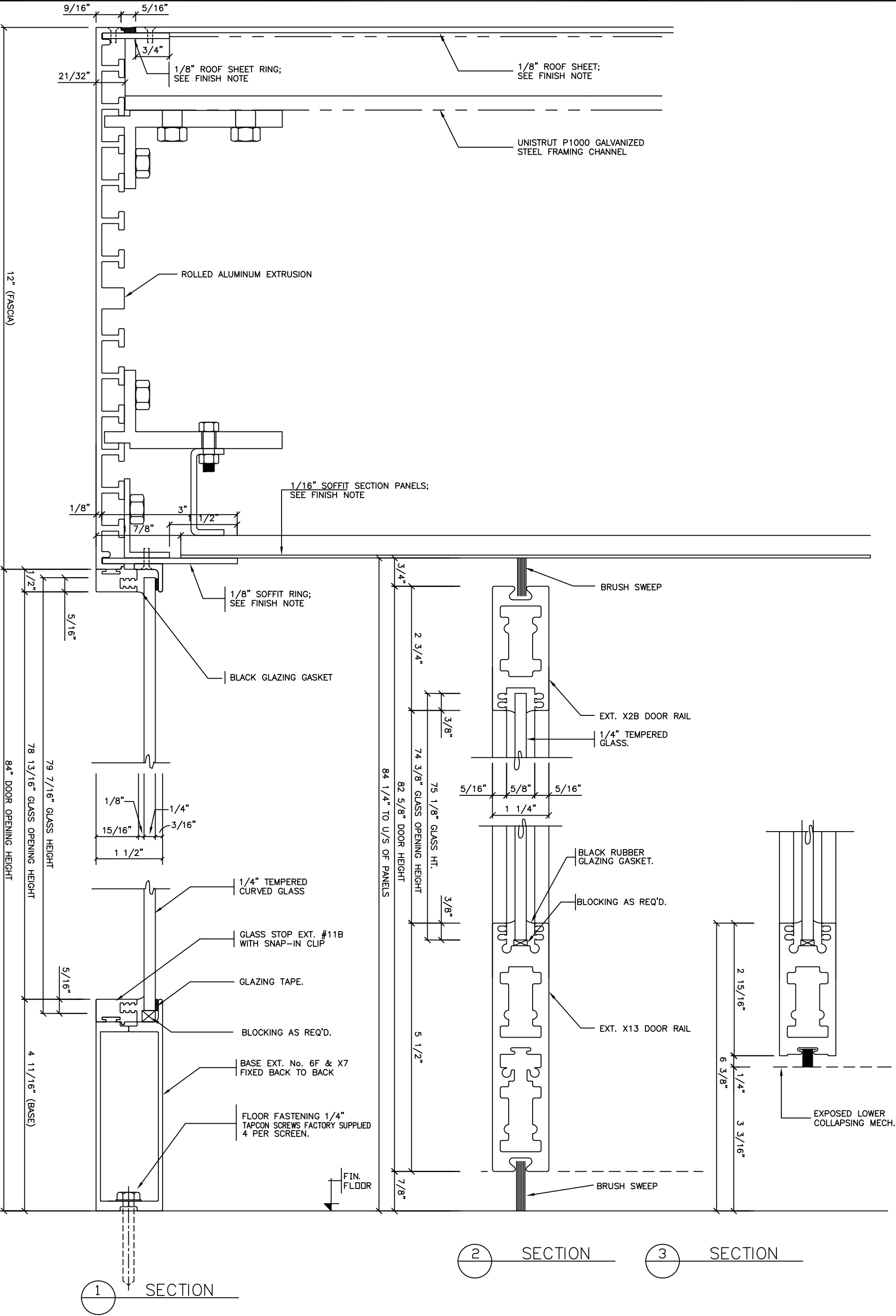
65 RIVERA DRIVE
MARRHAM, ONT.
CANADA, L3R 5J6

Tel. 888-301-5407
905-944-8005
Fax 905-944-8006

SECURITY DOOR
HORIZ-SECTION

BUILDING	
LOCATION	
ARCH-ENG.	
CONTRACTOR S.A.T.	
Drawn by ET	Job No.
Checked by	---
Scale	
Date APR 15/19	Dwg. No. 02
Finish	





Date	REVISIONS	By	Issue
No.	ISSUED	Date	

IMPORTANT NOTICE

C.J. Rush wishes to bring to your attention the following, for which we assume NO RESPONSIBILITY:

(1) The use of these drawings by other parties is the sole responsibility of that party as to site conditions, measurements, etc.,.

(2) Movement of structures by forces causing mis-alignment and improper function of our product.

(3) Results of glass breakage causing bodily harm through improper use or mischief.

SPECIAL REFERENCE NOTE

Very often the method of manufacturing as shown on these shop drawings are a development of the skills of the company. Any reproduction and or distribution in whole or in part, without expressed or written consent is strictly prohibited.

C.J. Rush



65 RIVERA DRIVE
MARRHAM, ONT.
CANADA, L3R 3J6

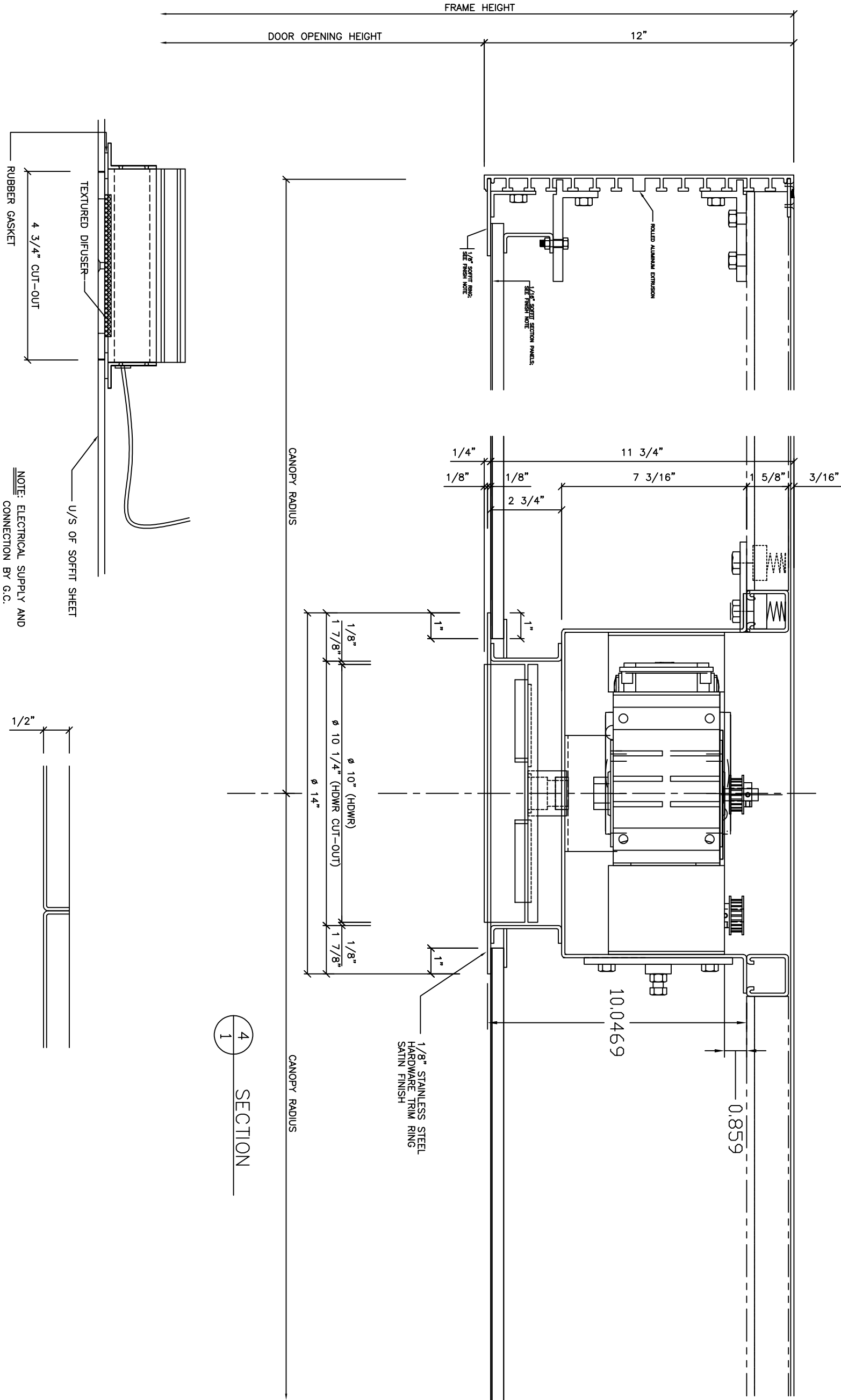
Tel. 888-301-5407
905-944-8005
Fax 905-944-8006

SECURITY DOOR
VERTICAL-SECTION

BUILDING	
LOCATION	
ARCH-ENG.	
CONTRACTOR S.A.T.	
Drawn by ET	Job No.
Checked by	---
Scale	
Date FEB 14/20	Dwg. No.
Finish	03

EXTERIOR

G.C. NOTE:
ABSOLUTELY NO LOAD
TO BE IMPOSED ON
STANLEY / RUSH CANOPY.



TYPICAL SECTION THROUGH CANOPY AT CEILING FIXTURE

SCALE: NONE

SECTION 4 1

DETAIL AT PANEL JOINTS

SCALE 2X

Date	REVISIONS	By	Issue
No.	ISSUED	Date	
	FOR APPROVAL	FEB 14/20	

IMPORTANT NOTICE

- C.J. Rush wishes to bring to your attention the following, for which we assume NO RESPONSIBILITY:
- (1) The use of these drawings by other parties is the sole responsibility of that party as to site conditions, measurements, etc.
 - (2) Movement of structures by forces causing mis-alignment and improper function of our product.
 - (3) Results of glass breakage causing bodily harm through improper use or mischief.

SPECIAL REFERENCE NOTE

Very often the method of manufacturing as shown on these shop drawings are a development of the skills of the company. Any reproduction and or distribution in whole or in part, without expressed or written consent is strictly prohibited.

C.J. Rush



65 RIVERA DRIVE
MARKHAM, ONT.
CANADA, L3R 5J6

Tel. 888-301-5407
905-944-8005
Fax 905-944-8006

REVOLVING DOOR
CANOPY SECTION
DETAILS

BUILDING	
LOCATION	
ARCH-ENG.	
CONTRACTOR S.A.T.	
Drawn by ET	Job No.
Checked by	---
Scale	
Date FEB 14/20	Dwg. No.
Finish	04

Date	REVISIONS	By	Issue
No.	ISSUED	Date	

IMPORTANT NOTICE

- C.J. Rush wishes to bring to your attention the following, for which we assume NO RESPONSIBILITY:
- (1) The use of these drawings by other parties is the sole responsibility of that party as to site conditions, measurements, etc..
 - (2) Movement of structures by forces causing mis-alignment and improper function of our product.
 - (3) Results of glass breakage causing bodily harm through improper use or mischief.

SPECIAL REFERENCE NOTE

Very often the method of manufacturing as shown on these shop drawings are a development of the skills of the company. Any reproduction and or distribution in whole or in part, without expressed or written consent is strictly prohibited.

C.J. Rush

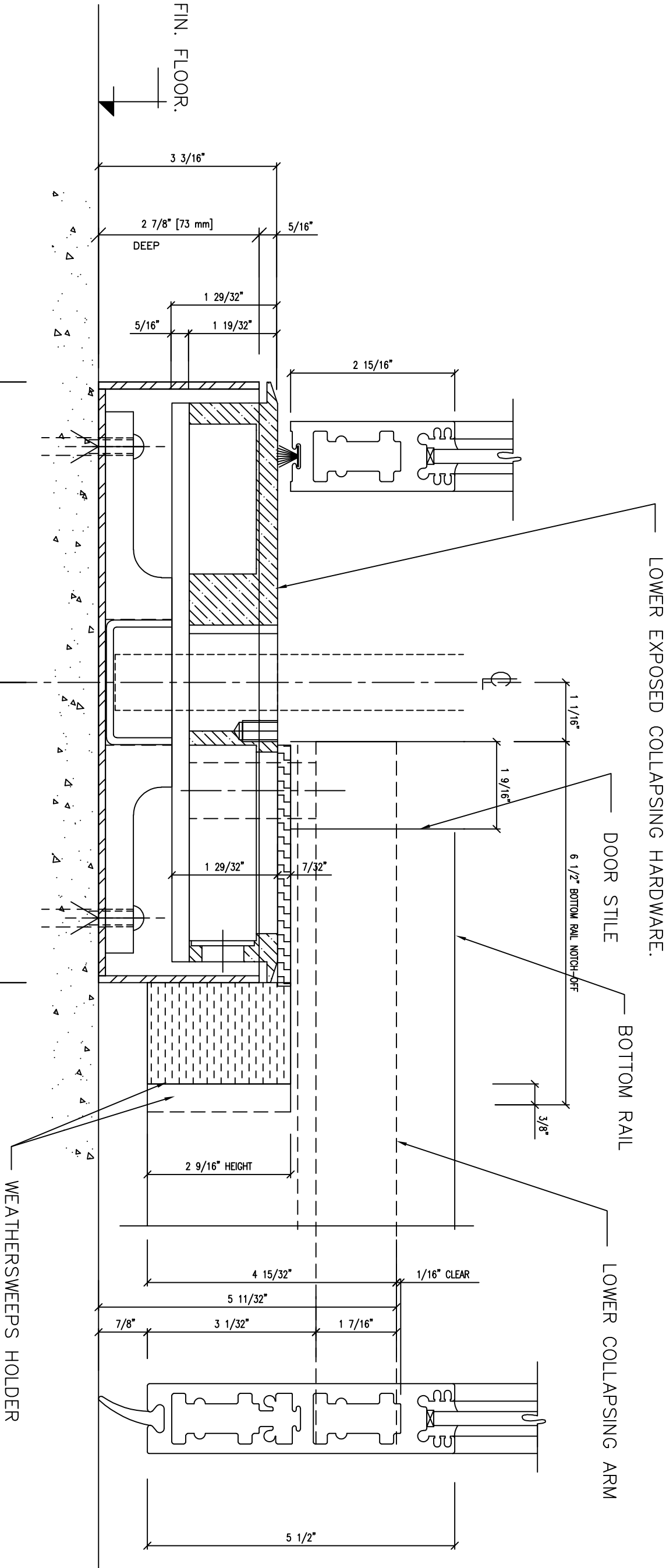


65 RIVERA DRIVE
MARKHAM, ONT.
CANADA, L3R 5J6

Tel. 888-301-5407
905-944-8005
Fax 905-944-8006

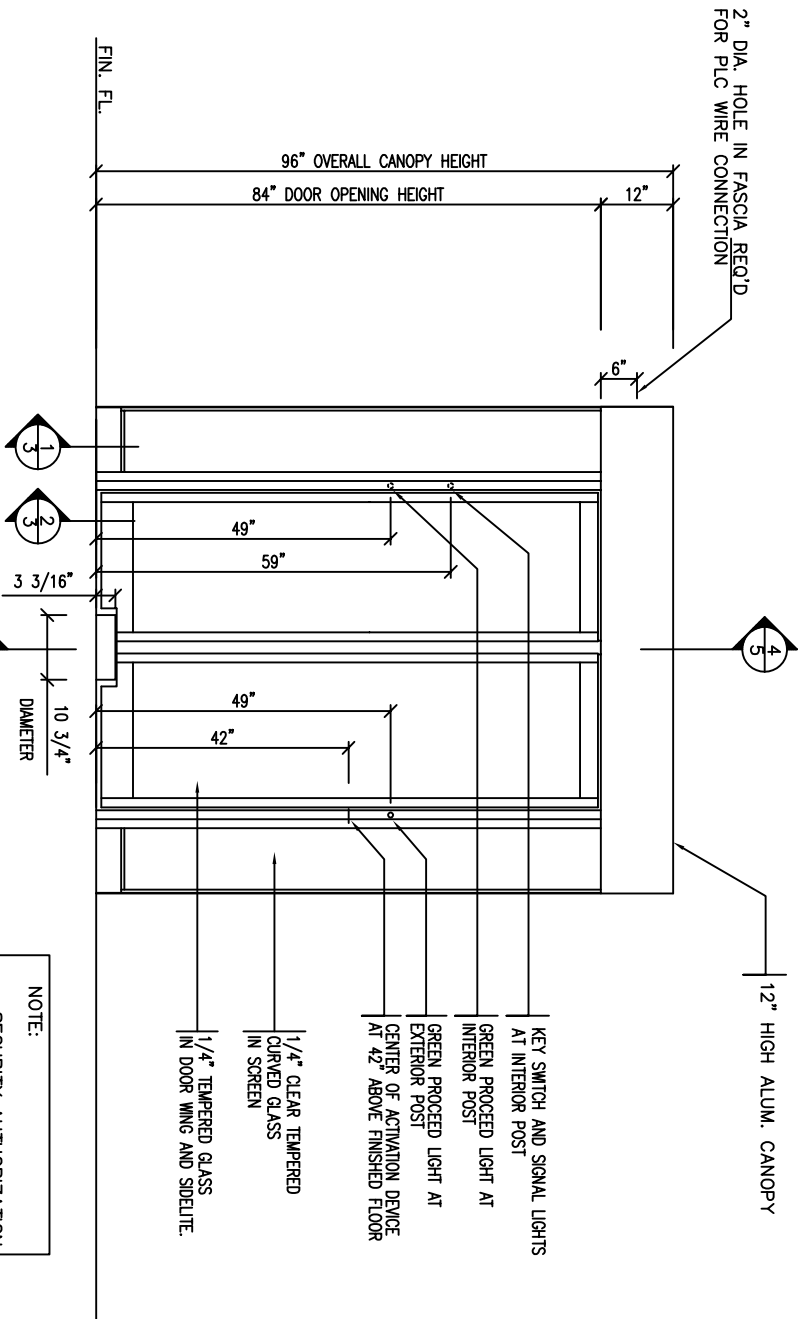
4900 SERIES REVOLVING
DOOR
EXPOSED COLLAPSING
SECTION

BUILDING	
LOCATION	
ARCH-ENG.	
CONTRACTOR	
Drawn by KH	Job No.
Checked by ET	
Scale	
Date MAY.08/18	Dwg. No. 05
Finish	



DETAIL - 4 WING EXPOSED LOWER COLLAPSING MECH.

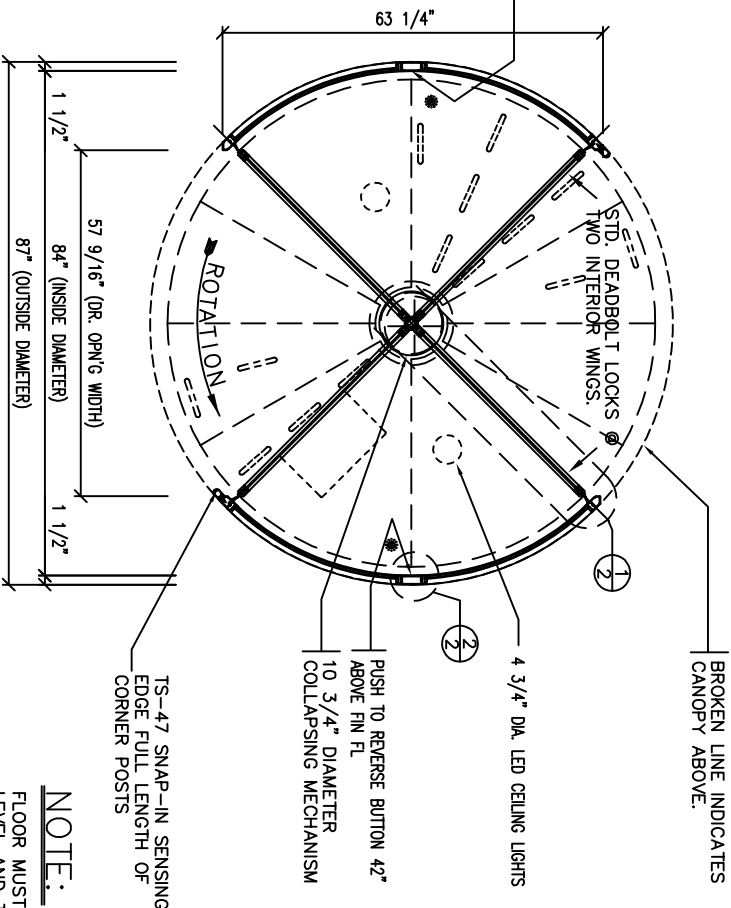
NOT TO SCALE



ENTRANCE ELEVATION

3 REQUIRED

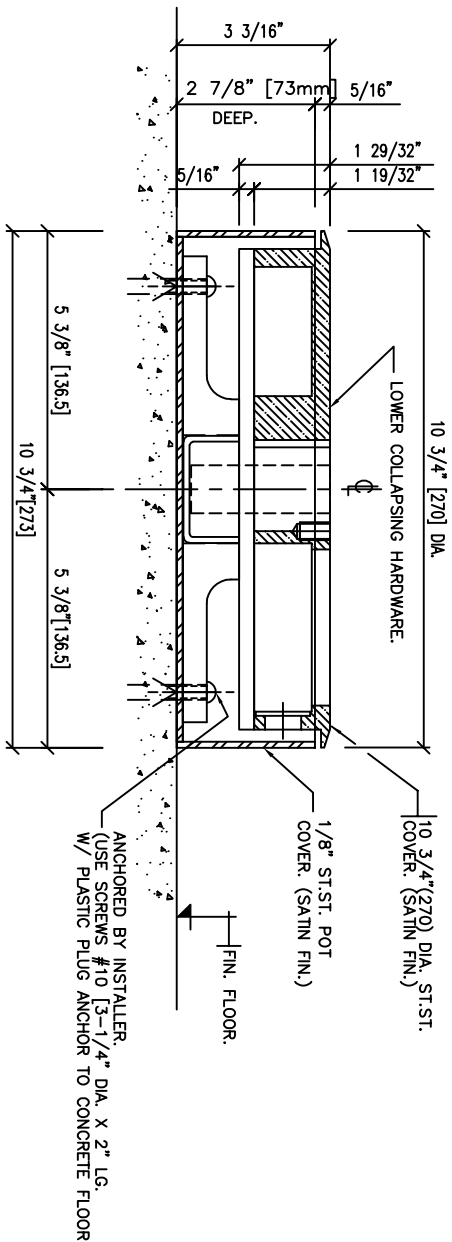
NOTE:
- SECURITY AUTHORIZATION
DEVICE BY OTHERS
- FREE FLOW EXITING



ENTRANCE PLAN

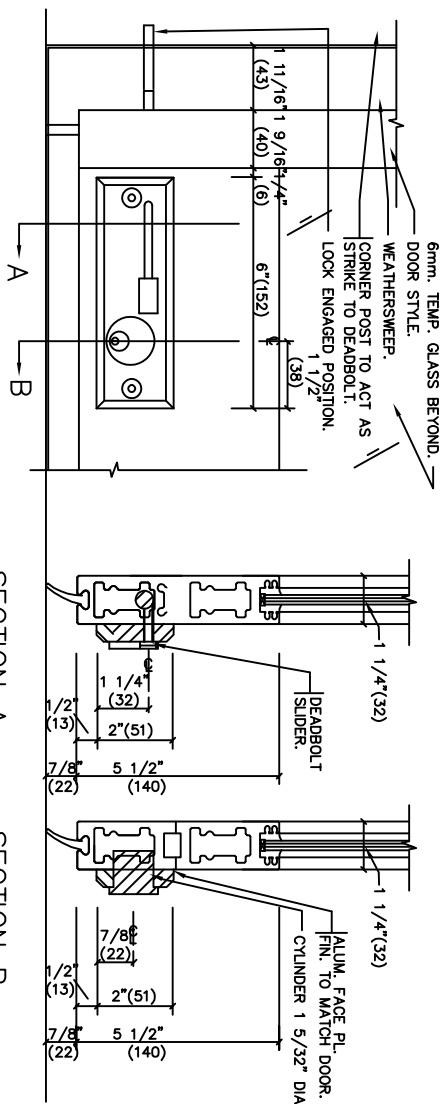
ANTI-PIGGYBACKING IN AND FREE FLOW OUT

NOTE:
FLOOR MUST BE
LEVEL AND TRUE AT
INTERIOR OF REV.
DOOR.



DETAIL - 4 WING EXPOSED LOWER COLLAPSING MECH.

NOT TO SCALE



STD. DEADBOLT DETAILS

SCALE: NONE

SECURITY REQUIREMENTS

- ☐ CHECK FOR ANTI-TAILGATING SECURITY TO ENTER
- ☐ CHECK FOR ANTI-TAILGATING AND ANTI-PIGGYBACKING SECURITY TO ENTER
- ☐ CHECK FOR FREE FLOW TO EXIT
- ☐ CHECK FOR ANTI-TAILGATING SECURITY TO EXIT
- ☐ CHECK FOR ANTI-PIGGYBACKING SECURITY TO EXIT
- ☐ SECURITY AUTHORIZATION DEVICE (CARD READER) BY OTHERS AT EXTERIOR TO ENTER
- ☐ SECURITY AUTHORIZATION DEVICE (CARD READER) BY OTHERS AT INTERIOR TO EXIT

Date	REVISIONS	By	Issue
No.	ISSUED	Date	
	FOR APPROVAL	APR 16/19	

IMPORTANT NOTICE

- C.J. Rush wishes to bring to your attention the following, for which we assume NO RESPONSIBILITY:
- (1) The use of these drawings by other parties is the sole responsibility of that party as to site conditions, measurements, etc..
 - (2) Movement of structures by forces causing mis-alignment and improper function of our product.
 - (3) Results of glass breakage causing bodily harm through improper use or mischief.

SPECIAL REFERENCE NOTE

Very often the method of manufacturing as shown on these shop drawings are a development of the skills of the company. Any reproduction and or distribution in whole or in part, without expressed or written consent is strictly prohibited.

C.J. Rush



65 RIVERA DRIVE
MARKHAM, ONT.
CANADA, L3R 3J6

Tel. 888-301-5407
905-944-8005
Fax 905-944-8006

SECURITY DOOR
PLAN/ELEV/DETAILS

BUILDING	
LOCATION	
ARCH-ENG.	
CONTRACTOR S.A.T.	
Drawn by ET	Job No.
Checked by	---
Scale	
Date APR 15/19	Dwg. No. 01
Finish	

Date	REVISIONS	By	Issue
No.	ISSUED	Date	

IMPORTANT NOTICE

- C.J. Rush wishes to bring to your attention the following, for which we assume NO RESPONSIBILITY:
- (1) The use of these drawings by other parties is the sole responsibility of that party as to site conditions, measurements, etc.,
- (2) Movement of structures by forces causing mis-alignment and improper function of our product.
- (3) Results of glass breakage causing bodily harm through improper use or mischief.

SPECIAL REFERENCE NOTE

Very often the method of manufacturing as shown on these shop drawings are a development of the skills of the company. Any reproduction and or distribution in whole or in part, without expressed or written consent is strictly prohibited.

C.J. Rush

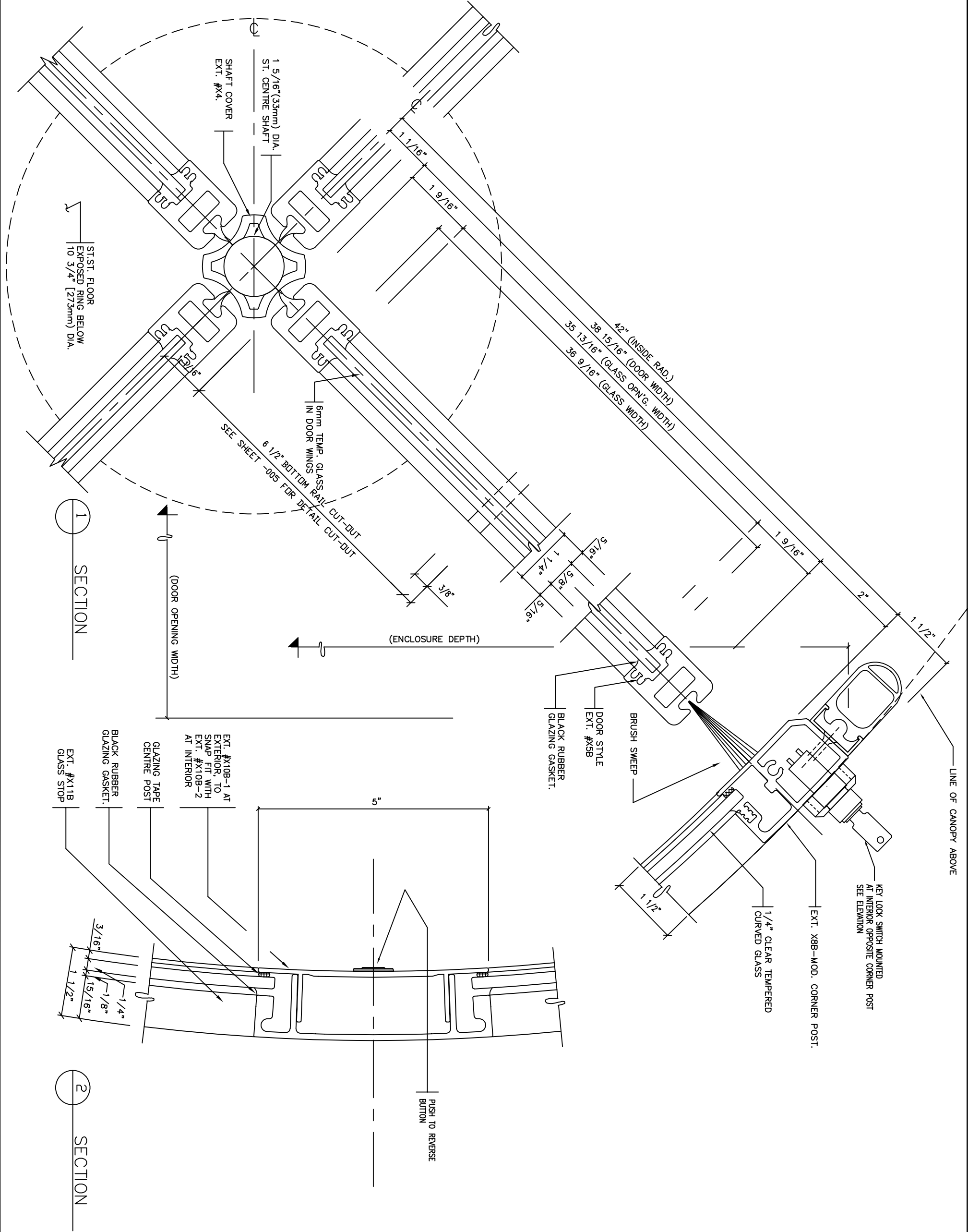


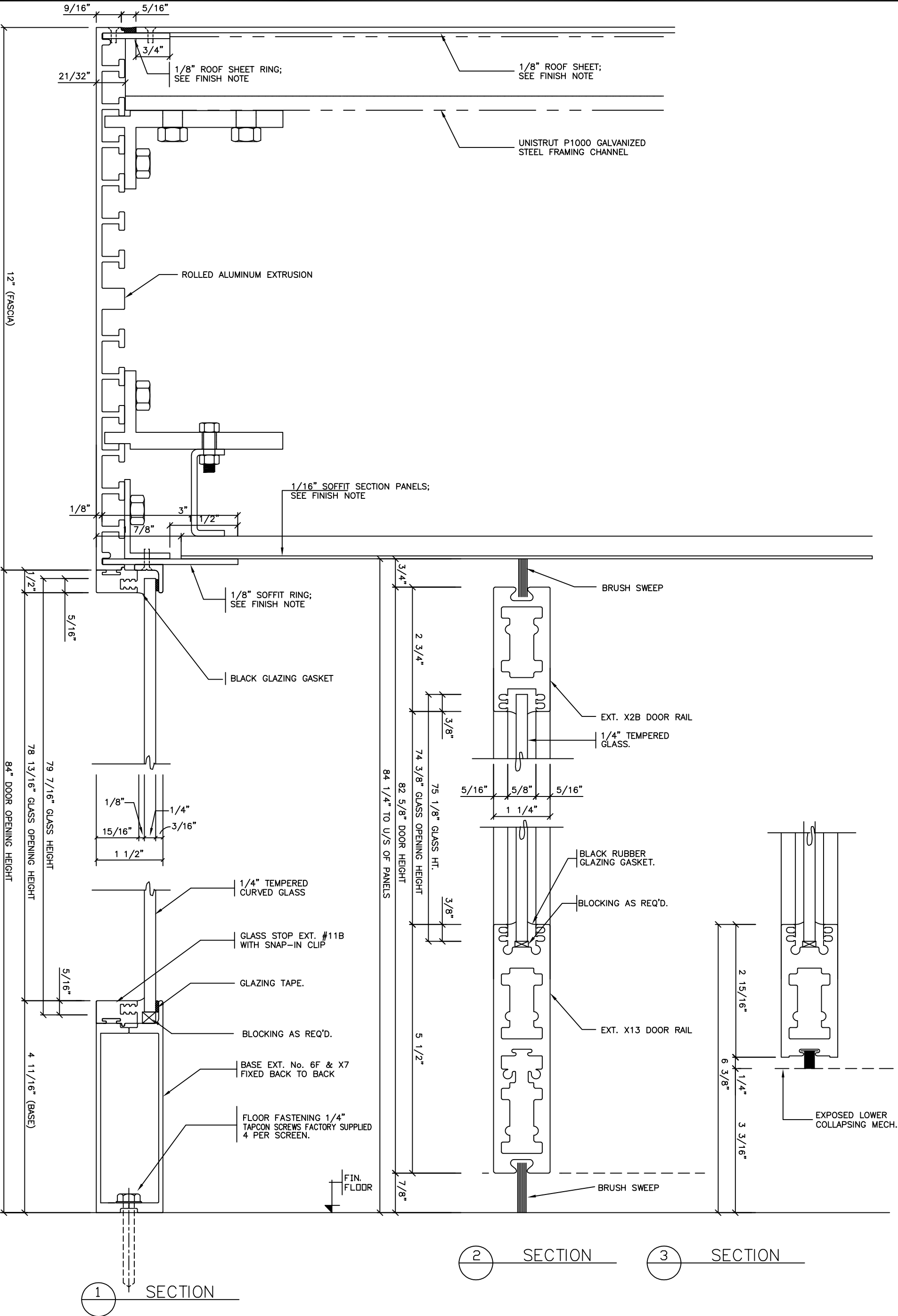
65 RIVERA DRIVE
MARRHAM, ONT.
CANADA, L3R 5J6

Tel: 888-301-5407
905-944-8005
Fax 905-944-8006

SECURITY DOOR
HORIZ-SECTION

BUILDING	
LOCATION	
ARCH-ENG.	
CONTRACTOR S.A.T.	
Drawn by ET	Job No.
Checked by	---
Scale	
Date APR 15/19	Dwg. No. 02
Finish	





Date	REVISIONS	By	Issue
No.	ISSUED	Date	

IMPORTANT NOTICE

C.J. Rush wishes to bring to your attention the following, for which we assume NO RESPONSIBILITY:

(1) The use of these drawings by other parties is the sole responsibility of that party as to site conditions, measurements, etc.,.

(2) Movement of structures by forces causing mis-alignment and improper function of our product.

(3) Results of glass breakage causing bodily harm through improper use or mischief.

SPECIAL REFERENCE NOTE

Very often the method of manufacturing as shown on these shop drawings are a development of the skills of the company. Any reproduction and or distribution in whole or in part, without expressed or written consent is strictly prohibited.

C.J. Rush



65 RIVERA DRIVE
MARRHAM, ONT.
CANADA, L3R 3J6

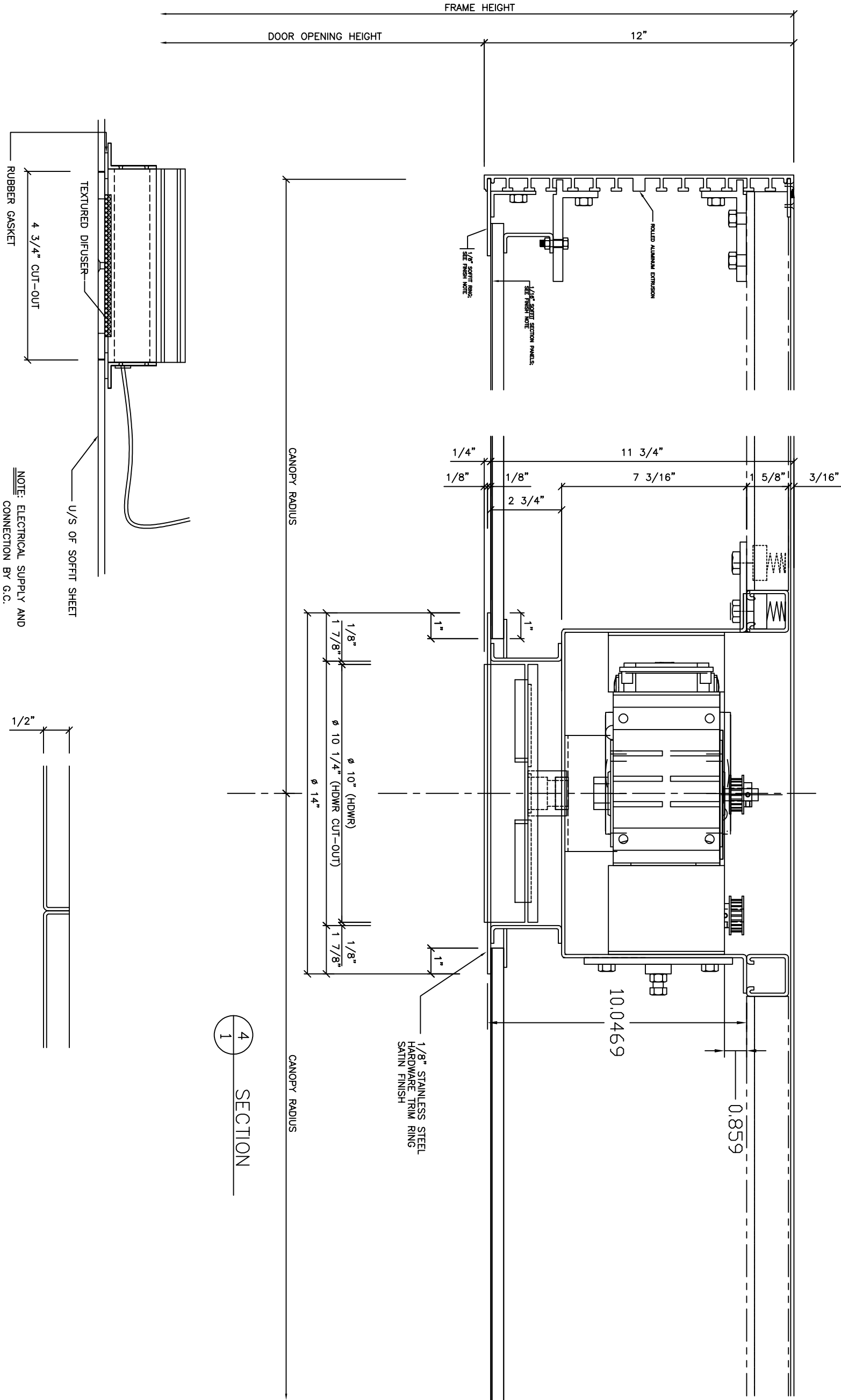
Tel. 888-301-5407
905-944-8005
Fax 905-944-8006

SECURITY DOOR
VERTICAL-SECTION

BUILDING	
LOCATION	
ARCH-ENG.	
CONTRACTOR S.A.T.	
Drawn by ET	Job No.
Checked by	---
Scale	
Date FEB 14/20	Dwg. No.
Finish	03

EXTERIOR

G.C. NOTE:
ABSOLUTELY NO LOAD
TO BE IMPOSED ON
STANLEY / RUSH CANOPY.



TYPICAL SECTION THROUGH CANOPY AT CEILING FIXTURE

SCALE: NONE

SECTION 4 1

DETAIL AT PANEL JOINTS

SCALE 2X

Date	REVISIONS	By	Issue
No.	ISSUED	Date	
	FOR APPROVAL	FEB 14/20	

IMPORTANT NOTICE

- C.J. Rush wishes to bring to your attention the following, for which we assume NO RESPONSIBILITY:
- (1) The use of these drawings by other parties is the sole responsibility of that party as to site conditions, measurements, etc.
 - (2) Movement of structures by forces causing mis-alignment and improper function of our product.
 - (3) Results of glass breakage causing bodily harm through improper use or mischief.

SPECIAL REFERENCE NOTE

Very often the method of manufacturing as shown on these shop drawings are a development of the skills of the company. Any reproduction and or distribution in whole or in part, without expressed or written consent is strictly prohibited.

C.J. Rush



65 RIVERA DRIVE
MARKHAM, ONT.
CANADA, L3R 5J6
Tel. 888-301-5407
905-944-8005
Fax 905-944-8006

REVOLVING DOOR
CANOPY SECTION
DETAILS

BUILDING	
LOCATION	
ARCH-ENG.	
CONTRACTOR S.A.T.	
Drawn by ET	Job No.
Checked by	---
Scale	
Date FEB 14/20	Dwg. No. 04
Finish	

Date	REVISIONS	By	Issue
No.	ISSUED	Date	

IMPORTANT NOTICE

- C.J. Rush wishes to bring to your attention the following, for which we assume NO RESPONSIBILITY:
- (1) The use of these drawings by other parties is the sole responsibility of that party as to site conditions, measurements, etc..
 - (2) Movement of structures by forces causing mis-alignment and improper function of our product.
 - (3) Results of glass breakage causing bodily harm through improper use or mischief.

SPECIAL REFERENCE NOTE

Very often the method of manufacturing as shown on these shop drawings are a development of the skills of the company. Any reproduction and or distribution in whole or in part, without expressed or written consent is strictly prohibited.

C.J. Rush

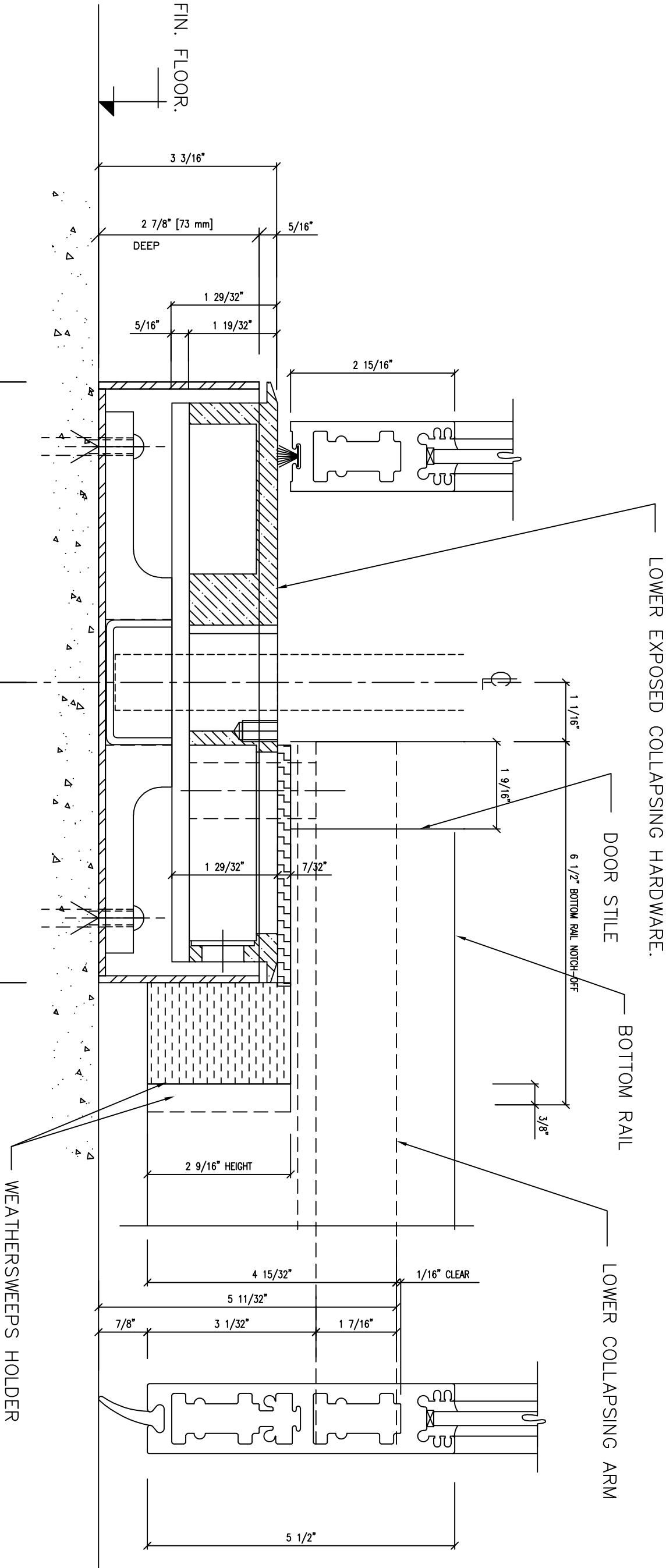


65 RIVERA DRIVE
MARKHAM, ONT.
CANADA, L3R 5J6

Tel. 888-301-5407
905-944-8005
Fax 905-944-8006

4900 SERIES REVOLVING
DOOR
EXPOSED COLLAPSING
SECTION

BUILDING	
LOCATION	
ARCH-ENG.	
CONTRACTOR	
Drawn by KH	Job No.
Checked by ET	
Scale	
Date MAY.08/18	Dwg. No. 05
Finish	



DETAIL - 4 WING EXPOSED LOWER COLLAPSING MECH.

NOT TO SCALE