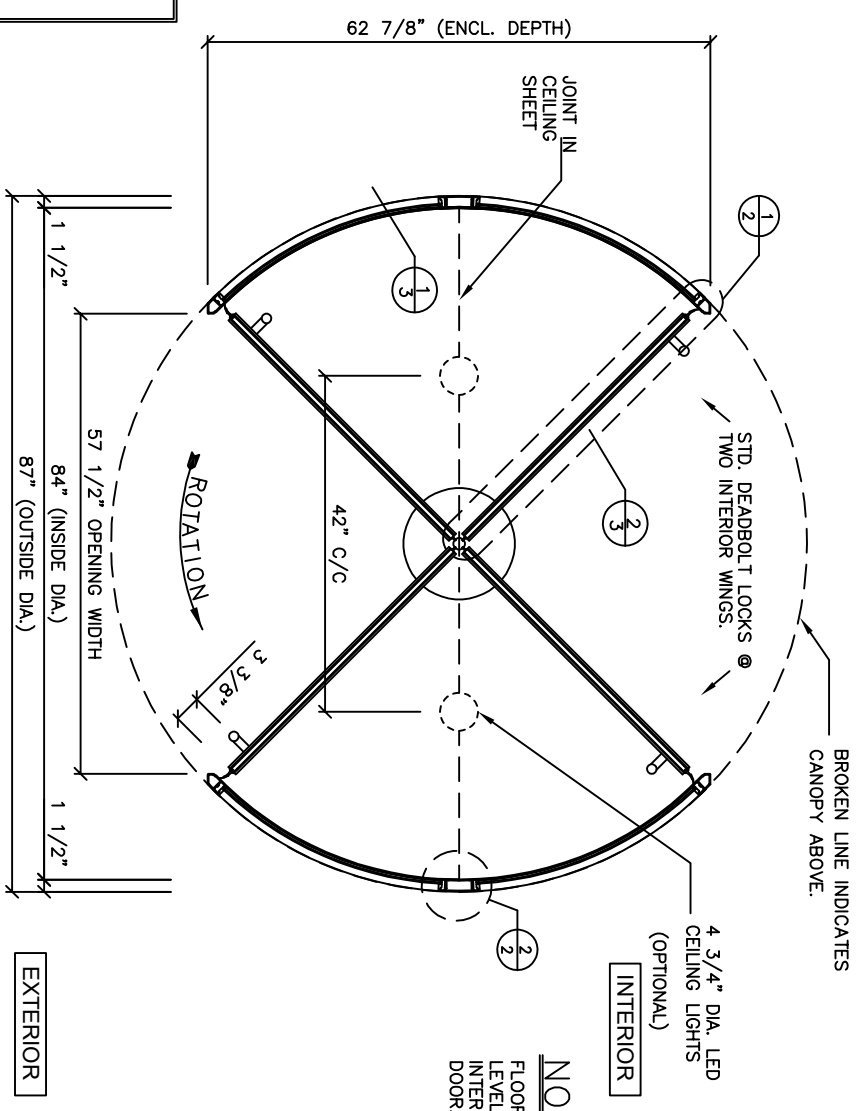


**REVOLVING DOOR ENTRANCE ELEVATION**  
**1 REQUIRED**

G.C. NOTE:  
RECESS REQ'D @ REV. DOOR CENTER (BY G.C.) FOR SPEED CONTROL MOTOR PER DETAIL AT RIGHT.

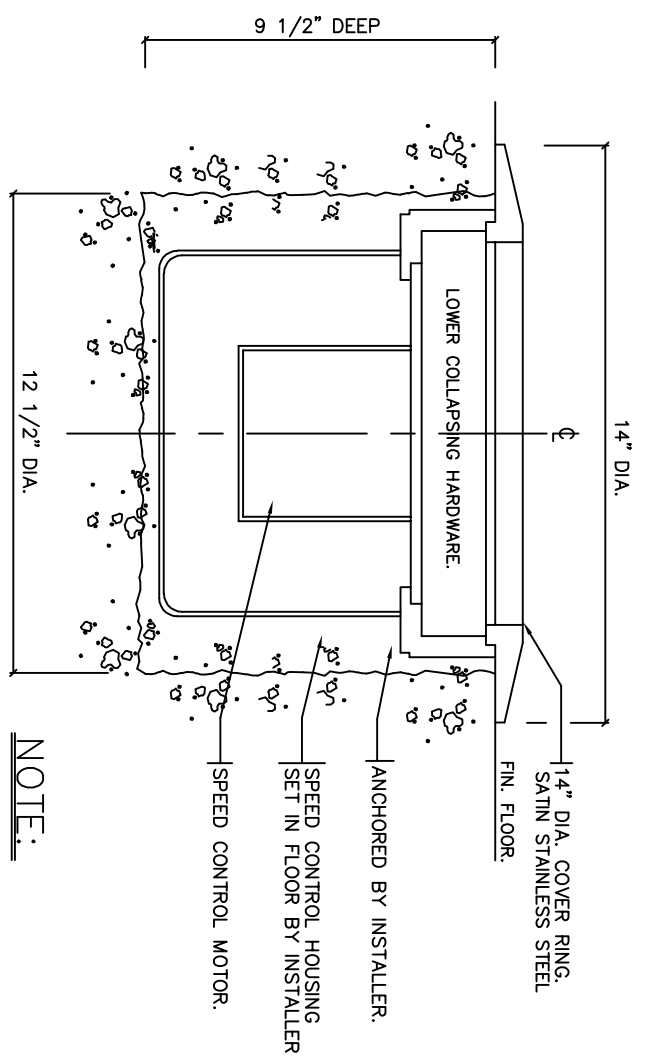


NOTE:  
FLOOR MUST BE LEVEL AND TRUE AT INTERIOR OF REV. DOOR.

**SHOP NOTE:**

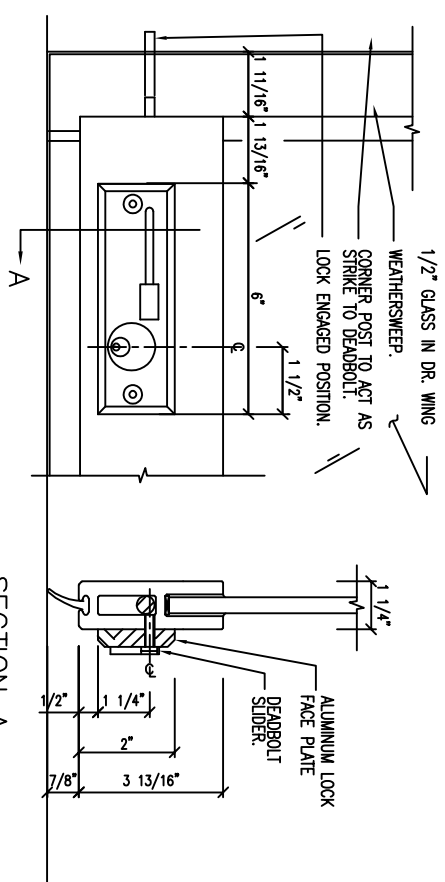
FINISH= ANODIZED/PAINT  
CURVED GLASS TINT= CLEAR  
DR. WG. GLASS TINT= CLEAR  
CEILING GLASS TINT= CLEAR  
FLOOR MANUAL SPEED CONTROL

NOTE:  
GENERAL CONTRACTOR TO PROVIDE 110V. 15AMP. POWER SUPPLY TO REV. DOOR CEILING LIGHTS INCLUDING ALL WIRING AND ACCESSORIES.



**DETAIL - 4 WING SPEED CONTROL**  
SCALE: NINE

NOTE:  
GENERAL CONTRACTOR TO PROVIDE 9 1/2" (241) DEEP X 12 1/2" (318) DIA. RECESS IN SLAB FOR SPEED CONTROL. ALL PREPARATORY WORK TO FLOOR & SLAB BY OTHERS.



**STD. DEADBOLT DETAILS**  
SCALE: NINE

Date	REVISIONS	By	Issue
No.	ISSUED	Date	

**IMPORTANT NOTICE**

C.I. Rush wishes to bring to your attention the following, for which we assume NO RESPONSIBILITY:  
(1) The use of these drawings by other parties is the sole responsibility of that party as to site conditions, measurements, etc.  
(2) Movement of structures by forces causing mis-alignment and improper function of our product.  
(3) Results of glass breakage causing bodily harm through improper use or mishandling.

**SPECIAL REFERENCE NOTE**

Very often the method of manufacturing as shown on these shop drawings are a development of the skills of the company. Any reproduction and/or distribution in whole or in part, without expressed or written consent is strictly prohibited.

C.I. Rush

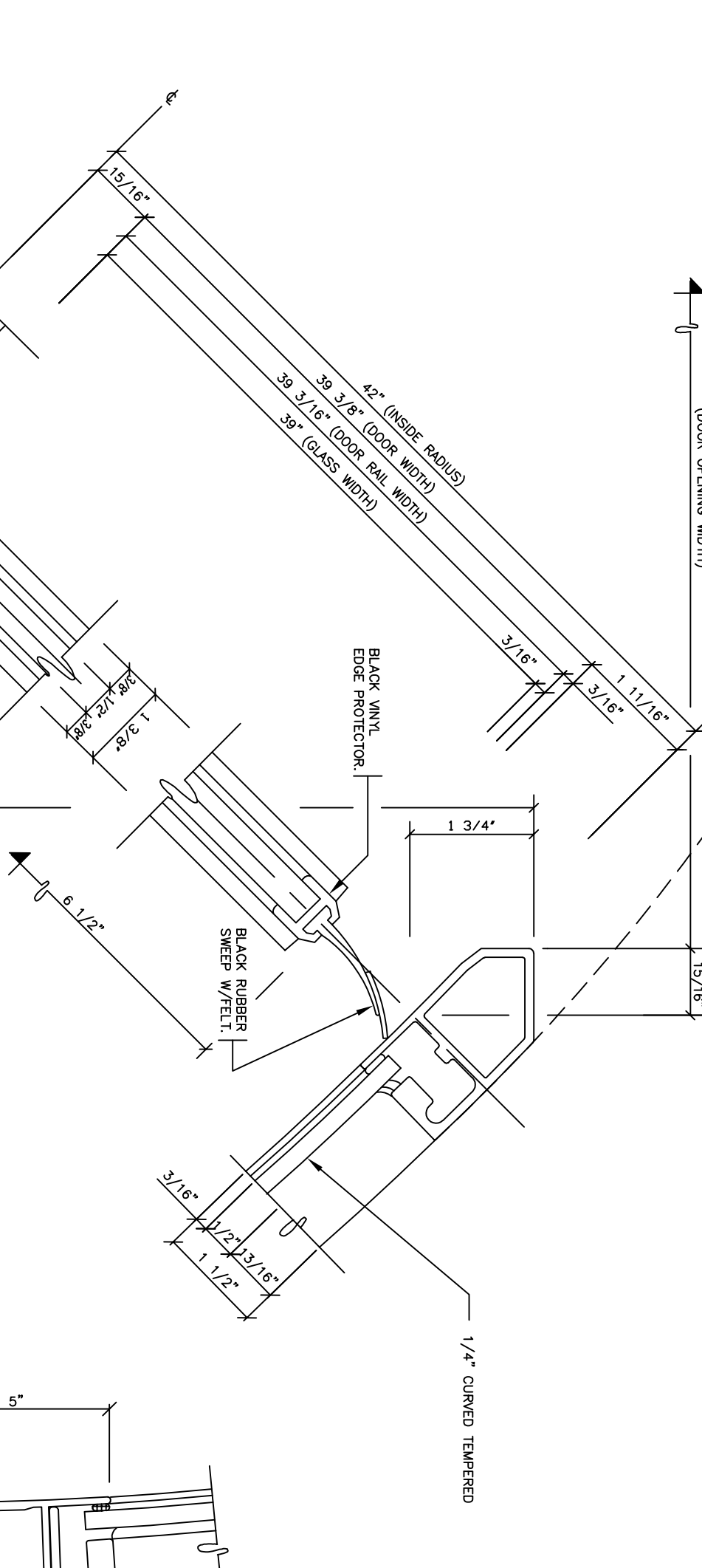


65 RIVERA DRIVE  
MARKHAM, ONT.  
CANADA, L3R 5J6  
Tel: 888-301-5407  
905-944-8005  
Fax: 905-944-8006

**3500 SERIES 4 WING REVOLVING DOOR ELEVATION / PLAN / DETAILS**

BUILDING	
LOCATION	
ARCH-ENG.	
CONTRACTOR	
Drawn by	Job No.
Checked by	
Scale	
Date	
Finish	
Dwg. No.	01

(DOOR OPENING WIDTH)

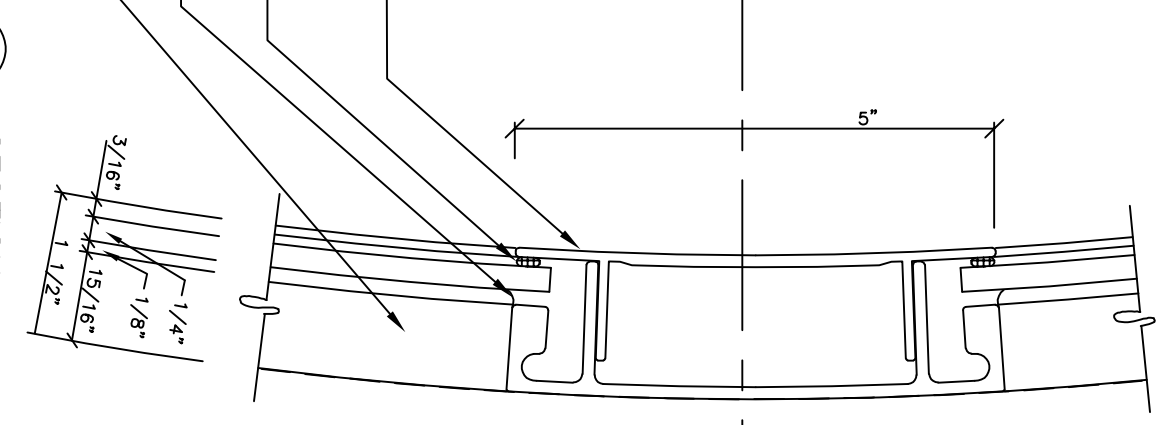


EXT. #12 BOTTOM DOOR RAIL.  
1 1/8" ST. ST. CTR. SHAFT W/ MOHAIR INSERTS  
1/2" TEMPERED GLASS.

(ENCLOSURE DEPTH)

1 SECTION

EXT. #X10B-1 AT EXTERIOR, TO SNAP FIT WITH EXT. #X10B-2 AT INTERIOR  
GLAZING TAPE CENTRE POST  
BLACK RUBBER GLAZING GASKET.  
EXT. #X11B GLASS STOP



2 SECTION

Date	REVISIONS	By	Issue

No.	ISSUED	Date

IMPORTANT NOTICE

C.I. Rush wishes to bring to your attention the following, for which we assume NO RESPONSIBILITY:

- (1) The use of these drawings by other parties is the sole responsibility of that party as to site conditions, measurements, etc.
- (2) Movement of structures by forces causing mis-alignment and improper function of our product.
- (3) Results of glass breakage causing bodily harm through improper use or mislead.

SPECIAL REFERENCE NOTE

Very often the method of manufacturing as shown on these shop drawings are a development of the skills of the company. Any reproduction and or distribution in whole or in part, without expressed or written consent is strictly prohibited.

C.I. Rush

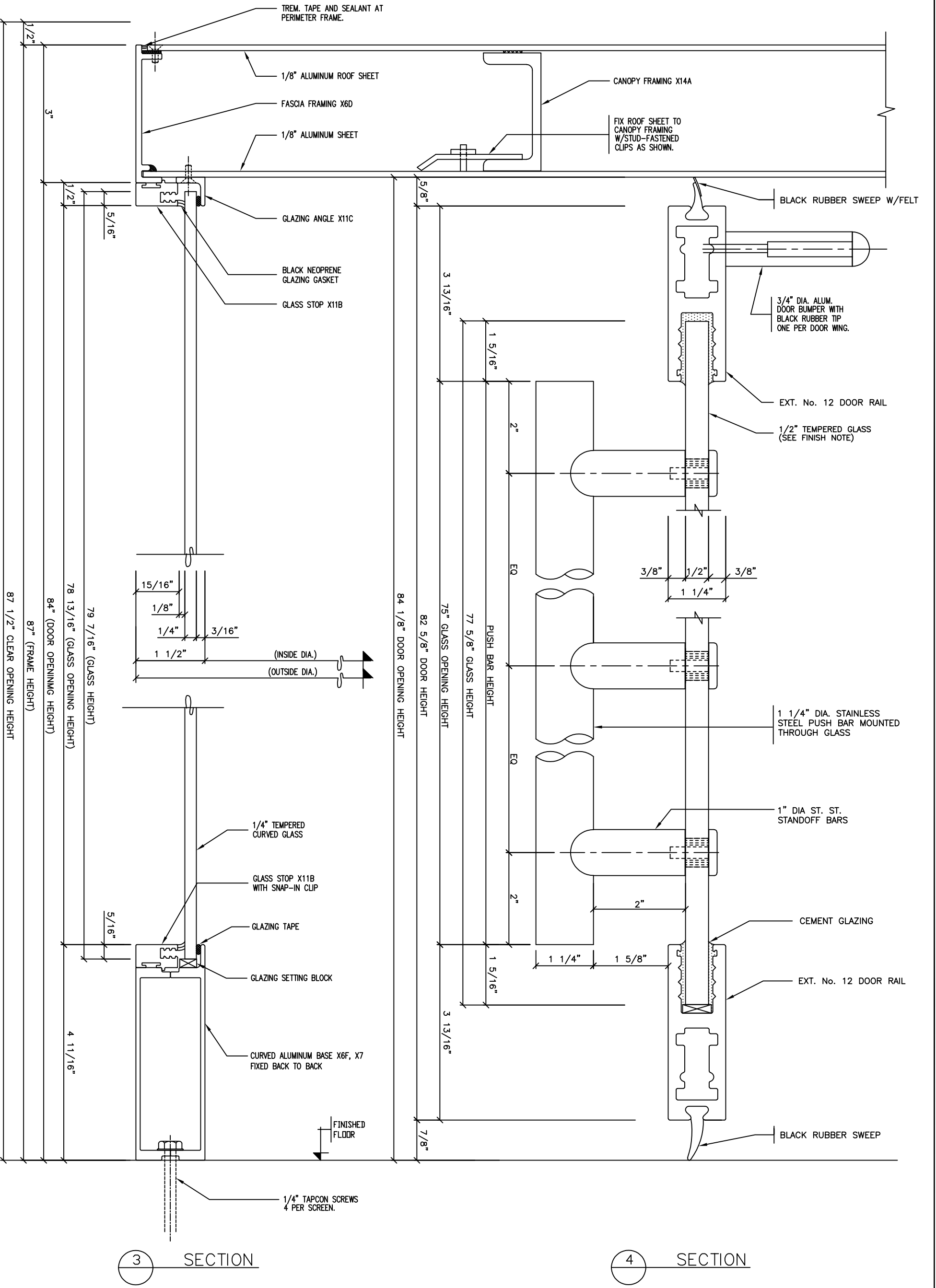


65 RIVERA DRIVE  
MARKHAM, ONT.  
CANADA, L3R 5J6

Tel: 888-301-5407  
905-944-8005  
Fax 905-944-8006

3500 SERIES 4WING  
REVOLVING DOOR  
PLAN / DETAILS

BUILDING	
LOCATION	
ARCH-ENG.	
CONTRACTOR	
Drawn by	Job No.
Checked by	
Scale	Dwg. No.
Date	02
Finish	



Date	REVISIONS	By	Issue

**IMPORTANT NOTICE**

C.J. Rush wishes to bring to your attention the following, for which we assume **NO RESPONSIBILITY**:

- (1) The use of these drawings by other parties is the sole responsibility of that party as to site conditions, measurements, etc.
- (2) Movement of structures by forces causing mis-alignment and improper function of our product.
- (3) Results of glass breakage causing bodily harm through improper use or mishandling.

**SPECIAL REFERENCE NOTE**

Very often the method of manufacturing as shown on these shop drawings are a development of the skills of the company. Any reproduction and/or distribution in whole or in part, without expressed or written consent is strictly prohibited.

C.J. Rush

**RUSH**  
ROTATING SYSTEMS LTD.

65 RIVERA DRIVE  
MARKHAM, ONT.  
CANADA, L3R 5J6

Tel: 888-301-5407  
905-944-8005  
Fax: 905-944-8006

**3 WING 3500 SERIES  
REVOLVING DOOR  
SECTION / DETAILS**

BUILDING \_\_\_\_\_

LOCATION \_\_\_\_\_

ARCH-ENG. \_\_\_\_\_

CONTRACTOR \_\_\_\_\_

Drawn by \_\_\_\_\_ Job No. \_\_\_\_\_

Checked by \_\_\_\_\_

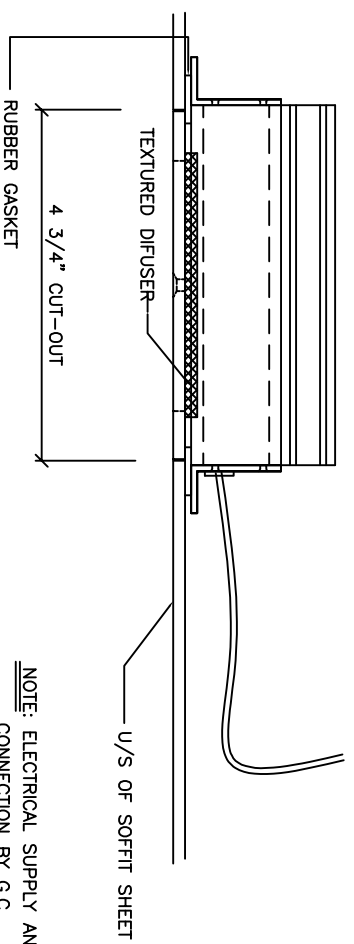
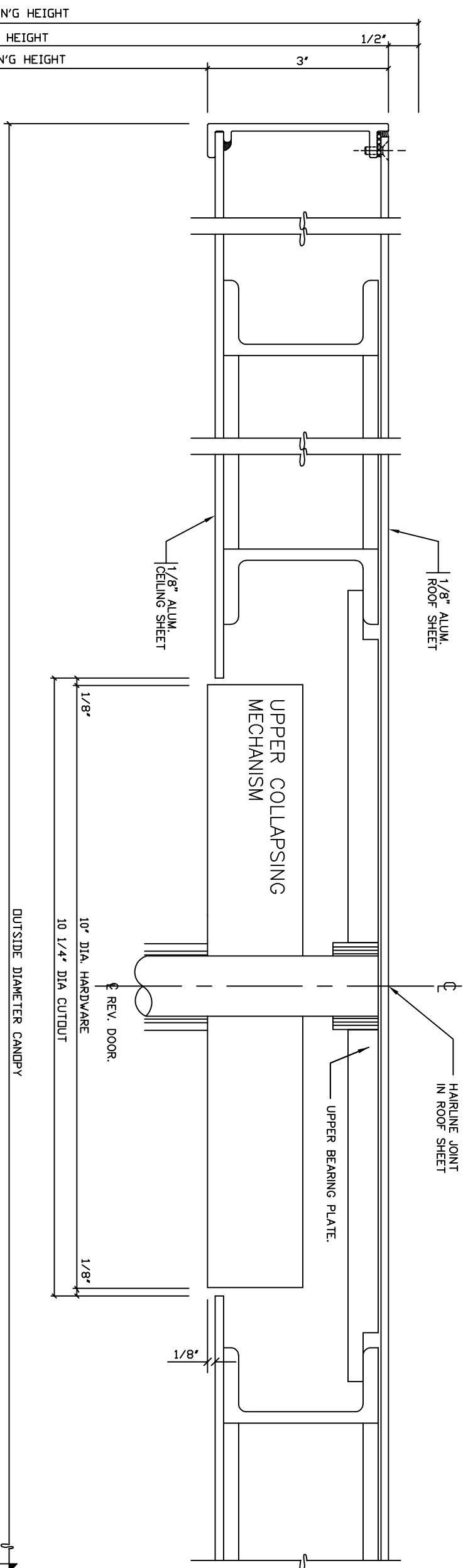
Scale \_\_\_\_\_

Date \_\_\_\_\_ Dwg. No. **03**

EXTERIOR

INTERIOR

NOTE: ABSOLUTELY NO LOAD IS TO BE IMPOSED ON STANLEY / RUSH CANOPY.



TYPICAL SECTION THROUGH CANOPY AT CEILING FIXTURE  
(OPTIONAL LED CEILING LIGHTS)

SCALE: NONE

5 SECTION

IMPORTANT NOTICE

- C.I. Rush wishes to bring to your attention the following, for which we assume NO RESPONSIBILITY:
- (1) The use of these drawings by other parties is the sole responsibility of that party as to site conditions, measurements, etc.
  - (2) Movement of structures by forces causing mis-alignment and improper function of our product.
  - (3) Results of glass breakage causing bodily harm through improper use or mishandling.

SPECIAL REFERENCE NOTE

Very often the method of manufacturing as shown on these shop drawings are a development of the skills of the company. Any reproduction and or distribution in whole or in part, without expressed or written consent is strictly prohibited.

C.I. Rush



65 RIVERA DRIVE  
MARKHAM, ONT.  
CANADA, L3R 5J6

Tel: 888-301-5407  
905-944-8005  
Fax 905-944-8006

3 WING 3500 SERIES  
REVOLVING DOOR  
CANOPY / SECTION

BUILDING	
LOCATION	
ARCH-ENG.	
CONTRACTOR	
Drawn by	Job No.
Checked by	
Scale	
Date	Dwg. No.
Finish	04