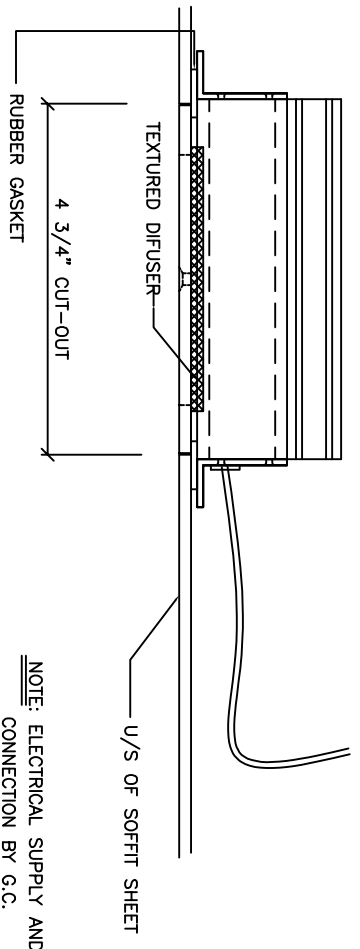
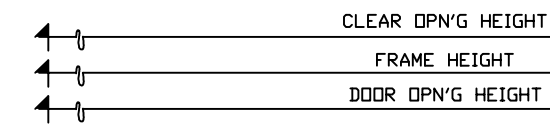
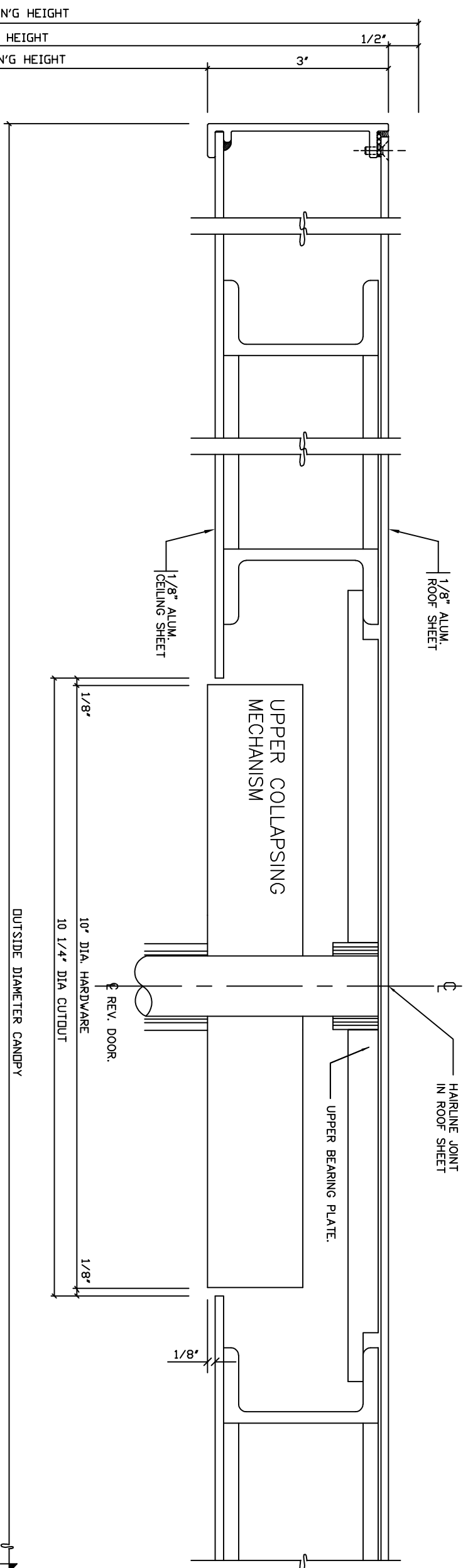


EXTERIOR

INTERIOR

NOTE: ABSOLUTELY NO LOAD IS TO BE IMPOSED ON STANLEY / RUSH CANOPY.



TYPICAL SECTION THROUGH CANOPY AT CEILING FIXTURE
(OPTIONAL LED CEILING LIGHTS)
SCALE: NONE

NOTE: ELECTRICAL SUPPLY AND CONNECTION BY G.C.

5 SECTION

IMPORTANT NOTICE

- C.J. Rush wishes to bring to your attention the following, for which we assume NO RESPONSIBILITY:
- (1) The use of these drawings by other parties is the sole responsibility of that party as to site conditions, measurements, etc.
 - (2) Movement of structures by forces causing mis-alignment and improper function of our product.
 - (3) Results of glass breakage causing bodily harm through improper use or mishandling.

SPECIAL REFERENCE NOTE

Very often the method of manufacturing as shown on these shop drawings are a development of the skills of the company. Any reproduction and or distribution in whole or in part, without expressed or written consent is strictly prohibited.

C.J. Rush



65 RIVERA DRIVE
MARKHAM, ONT.
CANADA, L3R 5J6
Tel: 888-301-5407
905-944-8005
Fax 905-944-8006

3 WING 1500 SERIES
REVOLVING DOOR
CANOPY / SECTION

BUILDING	
LOCATION	
ARCH-ENG.	
CONTRACTOR	
Drawn by	Job No.
Checked by	
Scale	
Date	Dwg. No.
Finish	04