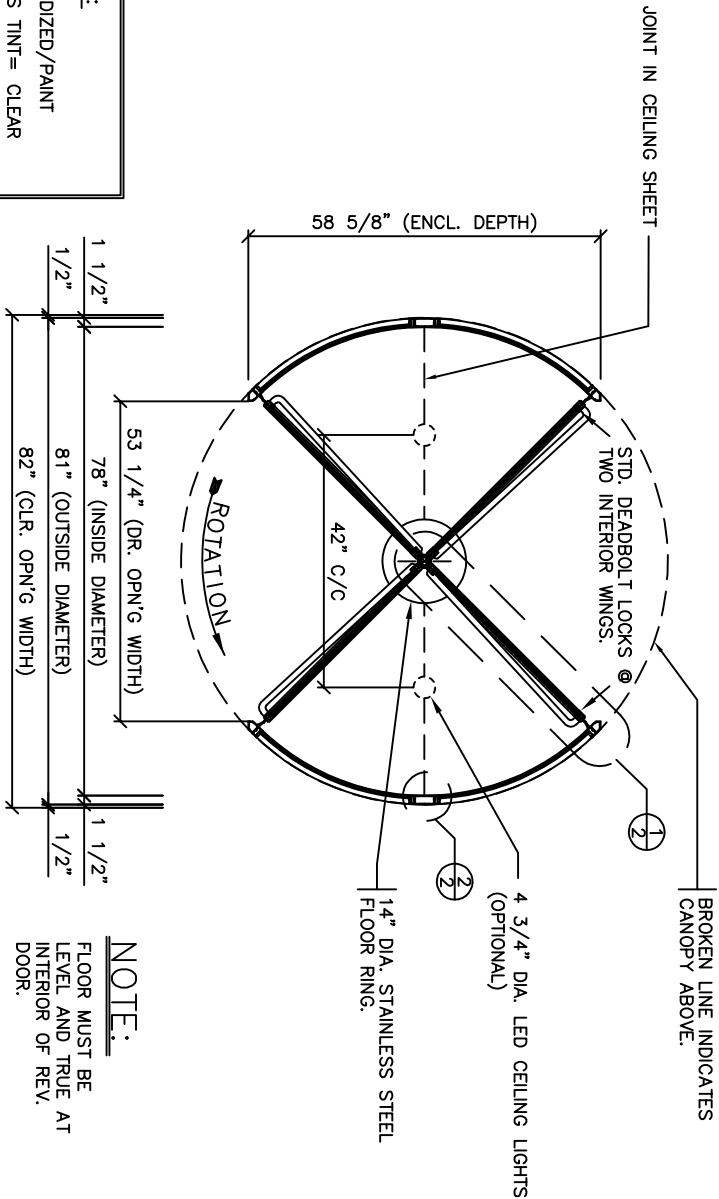


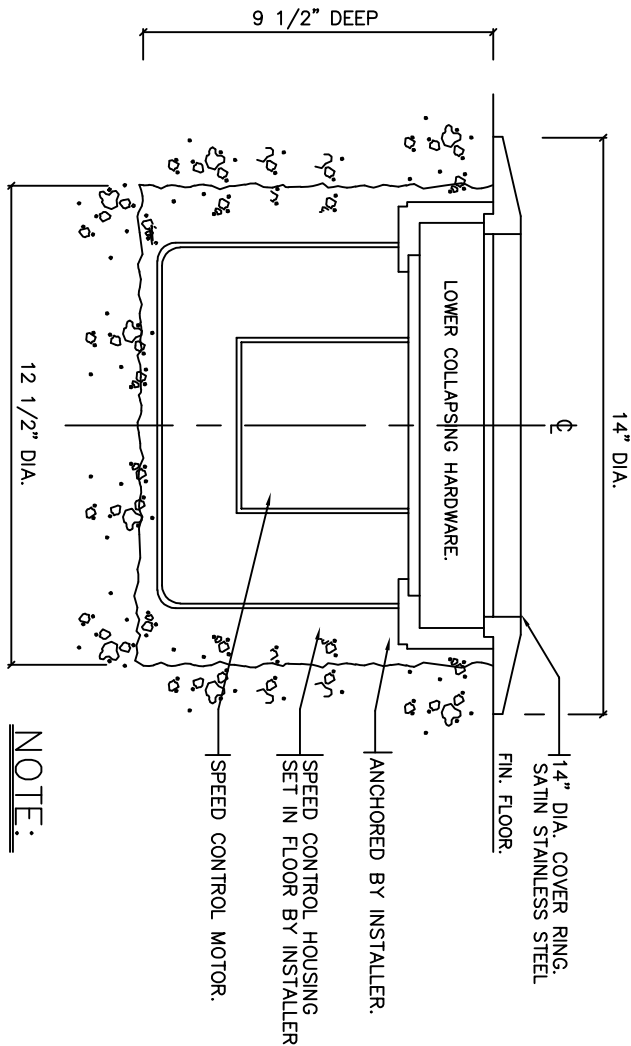
REVOLVING DOOR ENTRANCE ELEVATION  
1 REQUIRED



SHOP NOTE:
FINISH= ANODIZED/PAINT
CURVED GLASS TINT= CLEAR
DR. WG. GLASS TINT= CLEAR
FLOOR MANUAL SPEED CONTROL

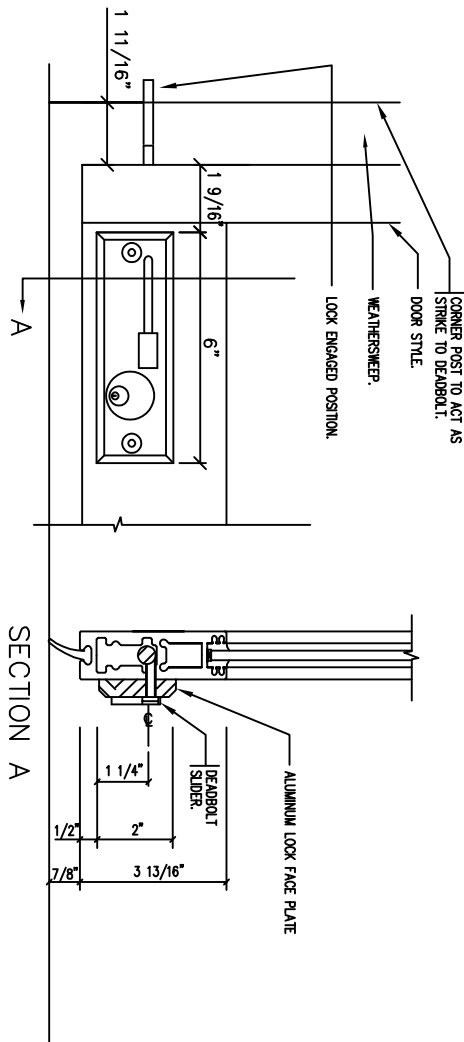
REVOLVING DOOR ENTRANCE PLAN

NOTE:  
GENERAL CONTRACTOR TO PROVIDE 110V 15AMP. POWER SUPPLY TO REV. DOOR CEILING LIGHTS INCLUDING ALL WIRING AND ACCESSORIES.

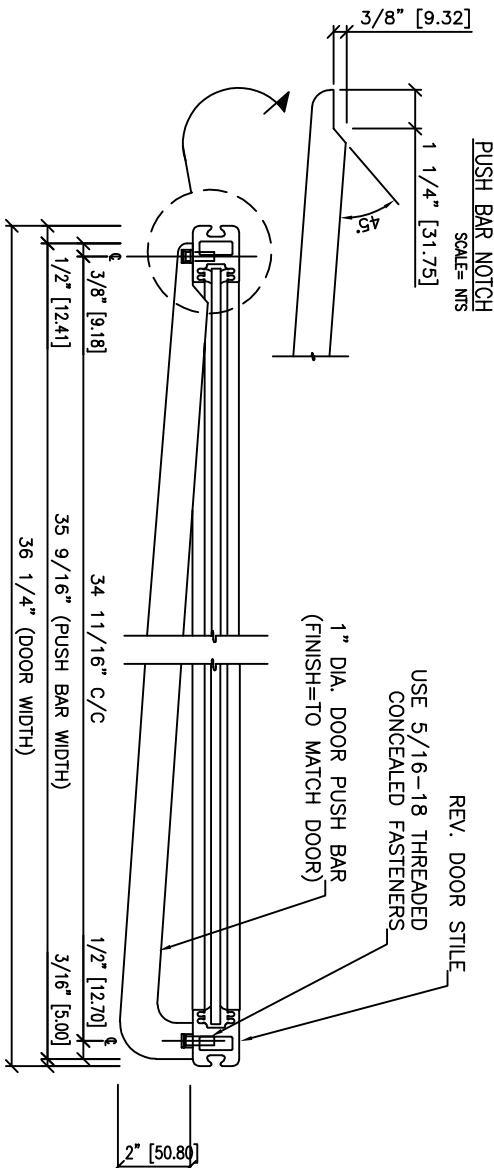


DETAIL - 4 WING SPEED CONTROL  
SCALE: NONE

NOTE:  
GENERAL CONTRACTOR TO PROVIDE 9 1/2" (241) DEEP X 12 1/2" (318) DIA. RECESS IN SLAB FOR SPEED CONTROL. ALL PREPARATORY WORK TO FLOOR & SLAB BY OTHERS.



STD. DEADBOLT DETAILS  
SCALE: NONE



1" DIA. PUSH BAR DETAIL  
SCALE: NTS

Date	REVISIONS	By	Issue
No.	ISSUED	Date	

IMPORTANT NOTICE  
C.J. Rush wishes to bring to your attention the following, for which we assume NO RESPONSIBILITY:  
(1) The use of these drawings by other parties is the sole responsibility of that party as to site conditions, measurements, etc..  
(2) Movement of structures by forces causing mis-alignment and improper function of our product.  
(3) Results of glass breakage causing bodily harm through improper use or mischief.

SPECIAL REFERENCE NOTE  
Very often the method of manufacturing as shown on these shop drawings are a development of the skills of the company. Any reproduction and or distribution in whole or in part, without expressed or written consent is strictly prohibited.

C.J. Rush



65 RIVERA DRIVE  
MARKHAM, ONT.  
CANADA, L3R 5J6  
Tel. 888-301-5407  
905-944-8005  
Fax 905-944-8006

4 WING 1500 SERIES REVOLVING DOOR PLAN / ELEV. / DETAILS		
BUILDING		
LOCATION		
ARCH-ENG.		
CONTRACTOR		
Drawn by	Job No.	
Checked by		
Scale		
Date	Dwg. No.	
Finish	01	

Date	REVISIONS	By	Issue
No.	ISSUED	Date	

IMPORTANT NOTICE

- C.J. Rush wishes to bring to your attention the following, for which we assume NO RESPONSIBILITY:
- (1) The use of these drawings by other parties is the sole responsibility of that party as to site conditions, measurements, etc.
  - (2) Movement of structures by forces causing mis-alignment and improper function of our product.
  - (3) Results of glass breakage causing bodily harm through improper use or mischief.

SPECIAL REFERENCE NOTE

Very often the method of manufacturing as shown on these shop drawings are a development of the skills of the company. Any reproduction and or distribution in whole or in part, without expressed or written consent is strictly prohibited.

C.J. Rush

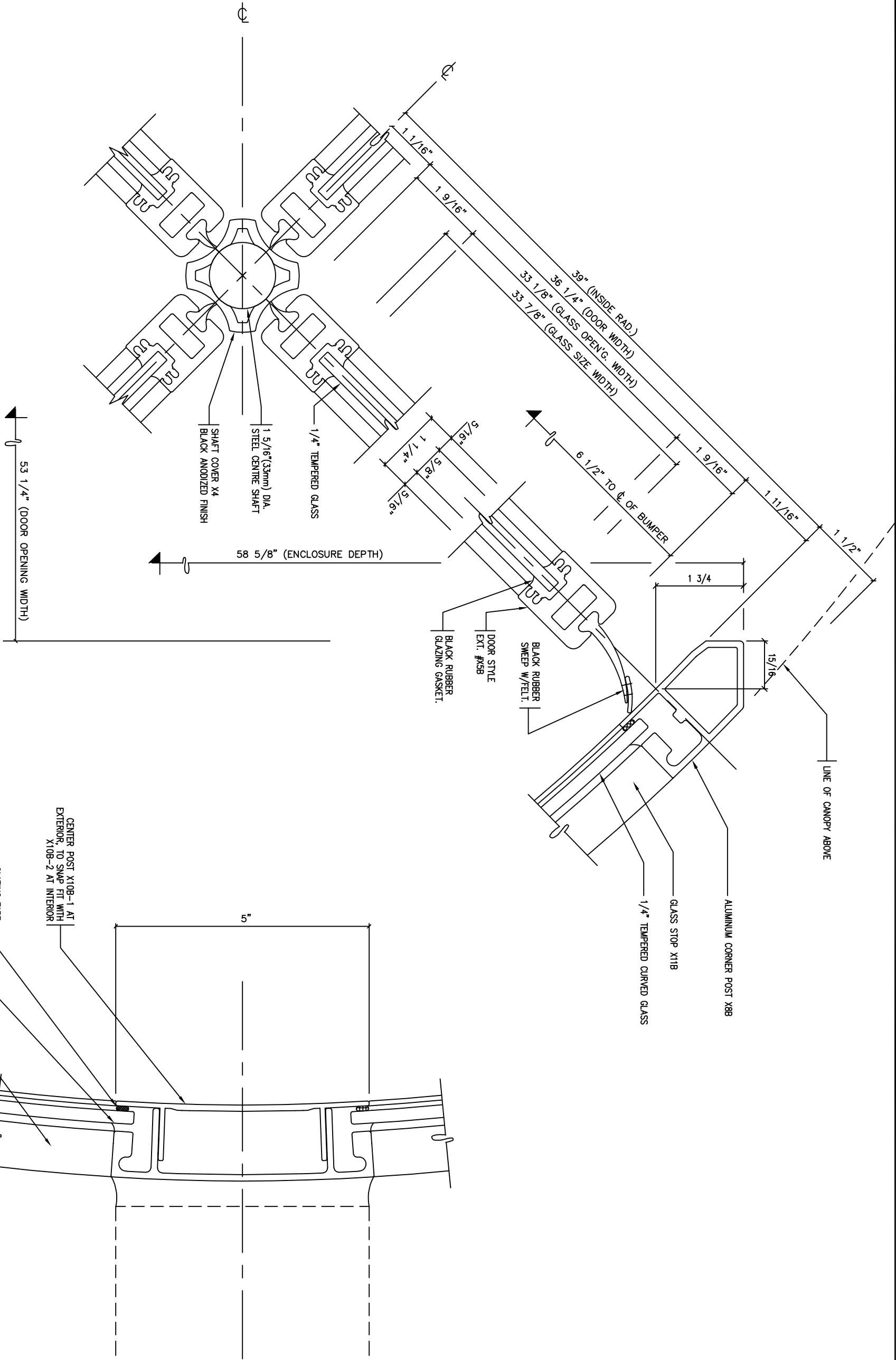


65 RIVERA DRIVE  
MARKHAM, ONT.  
CANADA, L3R 5J6

Tel. 888-301-5407  
905-944-8005  
Fax 905-944-8006

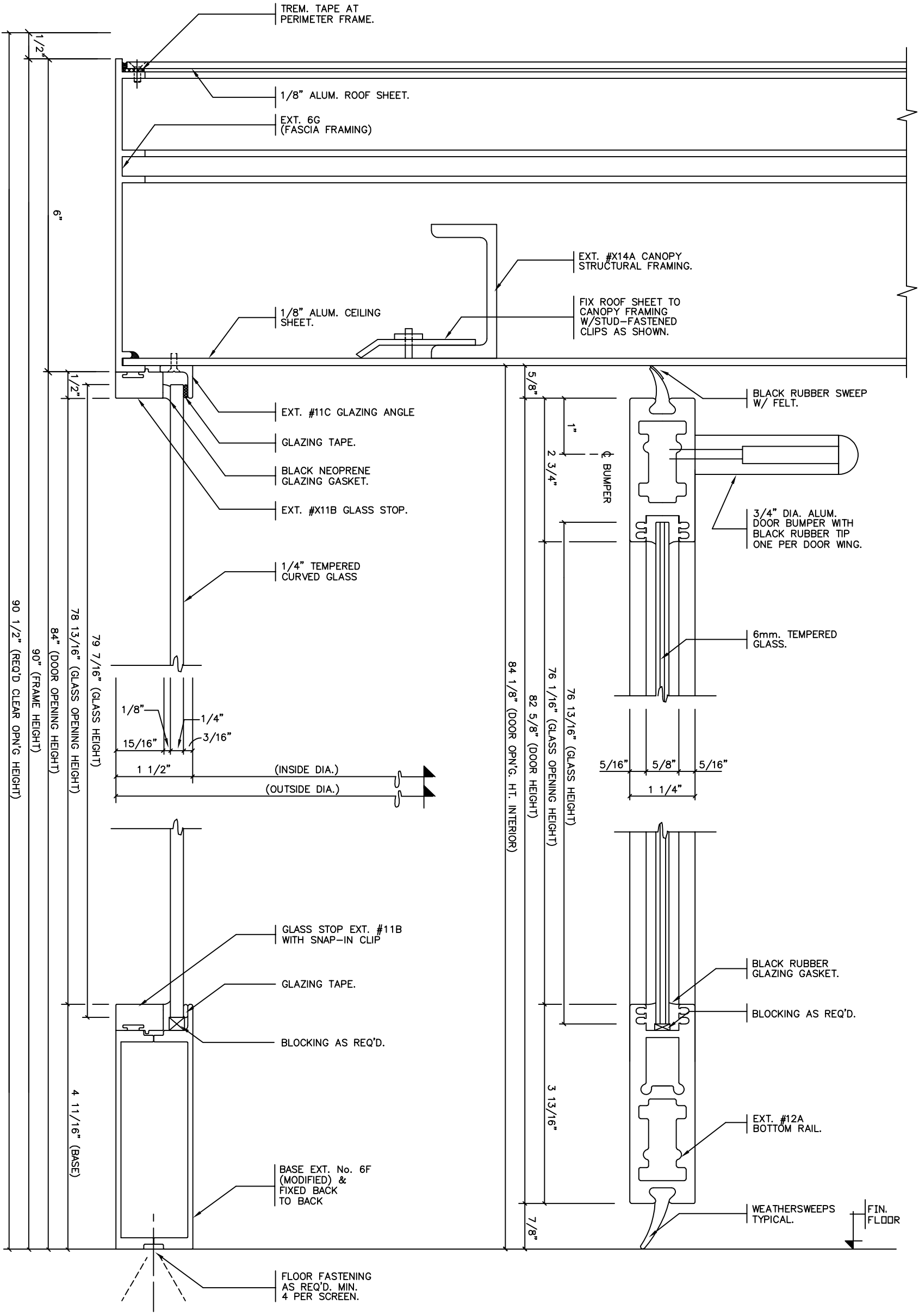
4 WING 1500 SERIES  
REVOLVING DOOR  
PLAN / DETAILS

BUILDING	
LOCATION	
ARCH-ENG.	
CONTRACTOR	
Drawn by	Job No.
Checked by	
Scale	
Date	Dwg. No.
Finish	02



1 SECTION

2 SECTION



3 SECTION  
1 FULL SCALE.

4 SECTION  
1 FULL SCALE.

Date	REVISIONS	By	Issue
No.	ISSUED	Date	
	FOR APPROVAL	?	

IMPORTANT NOTICE

- C.J. Rush wishes to bring to your attention the following, for which we assume NO RESPONSIBILITY:
- (1) The use of these drawings by other parties is the sole responsibility of that party as to site conditions, measurements, etc.
  - (2) Movement of structures by forces causing mis-alignment and improper function of our product.
  - (3) Results of glass breakage causing bodily harm through improper use or mischief.

SPECIAL REFERENCE NOTE

Very often the method of manufacturing as shown on these shop drawings are a development of the skills of the company. Any reproduction and or distribution in whole or in part, without expressed or written consent is strictly prohibited.

C.J. Rush

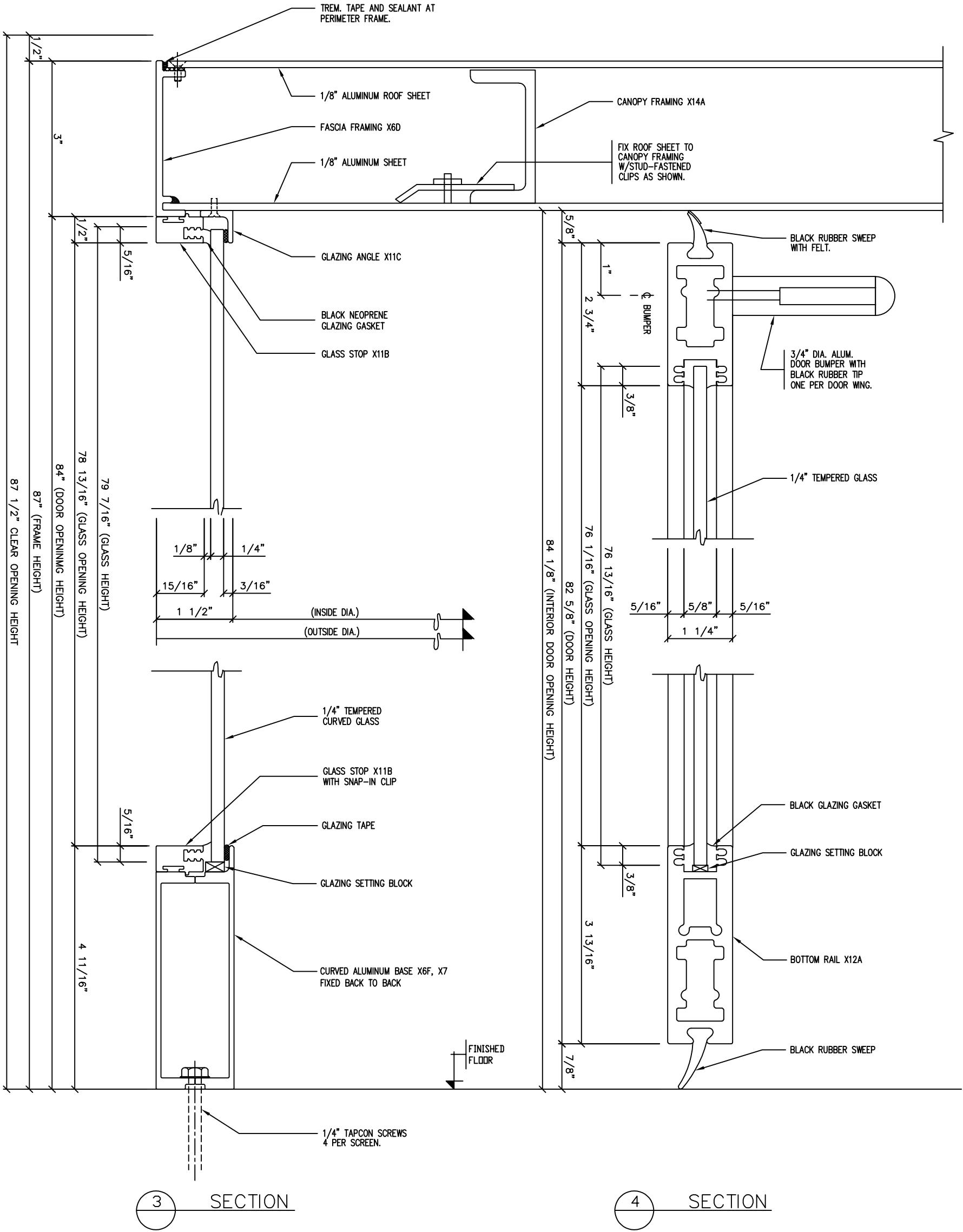


65 RIVERA DRIVE  
MARKHAM, ONT.  
CANADA, L3R 5J6

Tel: 888-301-5407  
905-944-8005  
Fax 905-944-8006

4 WING 1500 SERIES  
REVOLVING DOOR  
SECTION / DETAILS

BUILDING ?	
LOCATION ?	
ARCH-ENG.	
CONTRACTOR ?	
Drawn by ?	Job No.
Checked by?	?
Scale FULL SIZE	
Date ?	Dwg. No.
Finish AS SHOWN	03



Date	REVISIONS	By	Issue
No.	ISSUED	Date	

IMPORTANT NOTICE

- C.I. Rush wishes to bring to your attention the following, for which we assume NO RESPONSIBILITY:
- (1) The use of these drawings by other parties is the sole responsibility of that party as to site conditions, measurements, etc.
  - (2) Movement of structures by forces causing mis-alignment and improper function of our product.
  - (3) Results of glass breakage causing bodily harm through improper use or mischief.

SPECIAL REFERENCE NOTE

Very often the method of manufacturing as shown on these shop drawings are a development of the skills of the company. Any reproduction and or distribution in whole or in part, without expressed or written consent is strictly prohibited.

C.I. Rush



65 RIVERA DRIVE  
MARKHAM, ONT.  
CANADA, L3R 5J6

Tel. 888-301-5407  
905-944-8005  
Fax 905-944-8006

4 WING 1500 SERIES  
REVOLVING DOOR  
SECTION / DETAILS

BUILDING	
LOCATION	
ARCH-ENG.	
CONTRACTOR	
Drawn by	Job No.
Checked by	
Scale	
Date	Dwg. No.
Finish	03

[illegible]

## IMPORTANT NOTICE

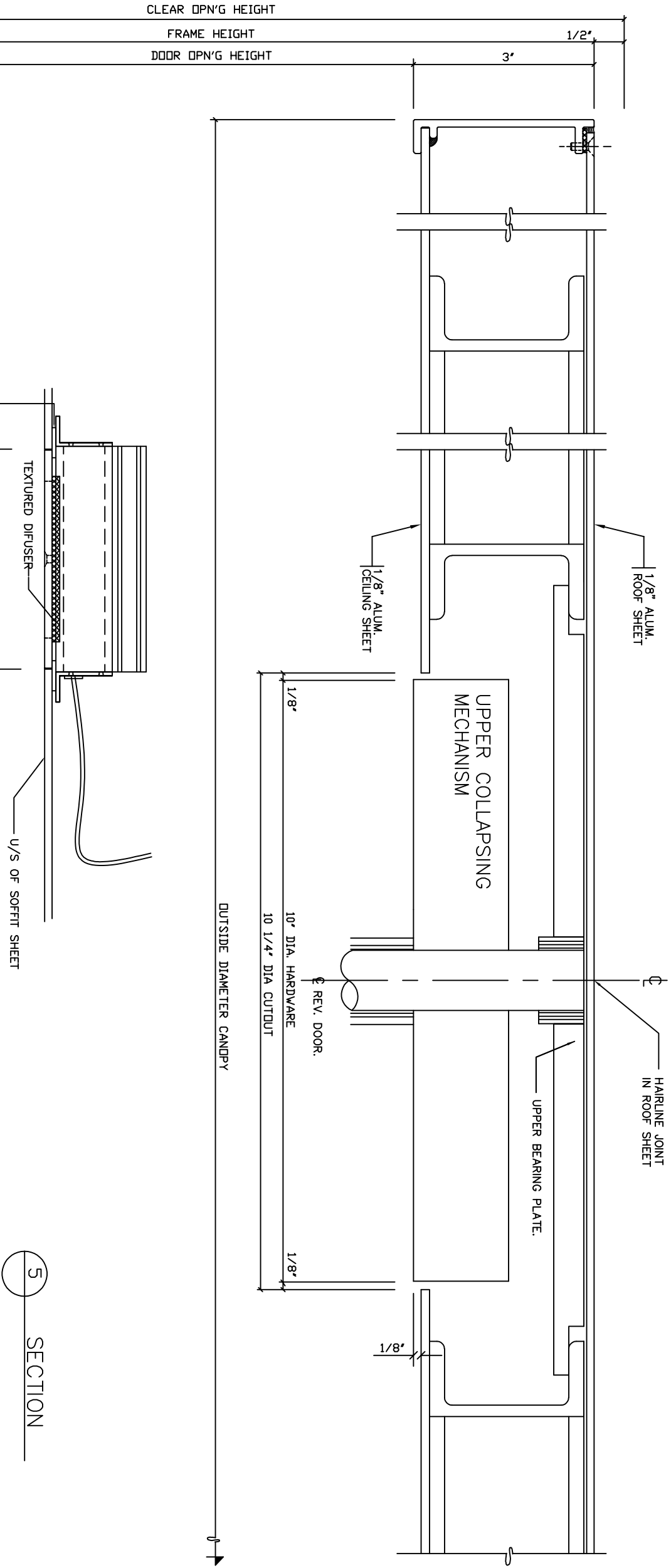
C.J. Rush wishes to bring to your attention the following, for which we assume NO RESPONSIBILITY:

- (1) The use of these drawings by other parties is the sole responsibility of that party as to site conditions, measurements, etc..
- (2) Movement of structures by forces causing misalignment and improper function of our product
- (3) Results of glass breakage causing bodily harm through improper use or misuse.

## SPECIAL REFERENCE NOTE

Very often the method of manufacturing as shown on these shop drawings are a development of the skills of the company. Any reproduction and or distribution in whole or in part, without expressed or written consent is strictly prohibited.

C.J. Rush



5 SECTION

Technical drawing showing a connection detail. The drawing includes a textured diffuser, a rubber gasket, and a U/S of soffit sheet. A dimension line indicates a 4 3/4" cut-out. A note specifies: NOTE: ELECTRICAL SUPPLY AND CONNECTION BY G.C.

TYPICAL SECTION THROUGH CANOPY AT CEILING FIXTURE  
(OPTIONAL LED CEILING LIGHTS)  
SCALE: NONE

SCALE: NONE

65 RIVERA DRIVE MARKHAM, ONT. CANADA, L3R 5J6		Tel. 888-301-5407 905-944-8005 Fax 905-944-8006
4 WING 1500 SERIES REVOLVING DOOR CANOPY / SECTION		
BUILDING		
LOCATION		
ARCH.-ENG.		
CONTRACTOR		Job No.
Drawn by		
Checked by		
Scale		
Date	Dwg. No.	
Finish	04	

**NOTE:**  
CANOPY HEIGHT IS NOT  
TO SCALE.

EXTERIOR

1/16" TREM. TAPE  
PERIMETER FRAME.

1/8" ALUM. ROOF SHEET.

#X 14A  
CANOPY FRAME

EXT. X6D  
(FASCIA FRAMING)

1/8" ALUMINUM ROOF SHEET  
SOFFIT SHEET

(OUTSIDE RAD. AT CANOPY)

**NOTE:** ABSOLUTELY NO LOAD  
IS TO BE IMPOSED ON  
STANLEY / RUSH CANOPY.

INTERIOR

OVERHEAD MANUAL SPEED CONTROL

8 1/2"

UPPER COLLAPSING  
MECHANISM

REV. DOOR.

10" DIA. HARDWARE

10 1/4" DIA CUT-OUT

(INSIDE RAD. AT CANOPY)

(OUTSIDE DIA. OF CANOPY)

5 SECTION  
HALF FULL SCALE.

(CLEAR OPN'G HEIGHT)  
(FRAME HEIGHT)  
(DOOR OPN'G HEIGHT)

1/2"

3"

15 11/16"

14"(356) DIA.

14"(356) DIA. STAINLESS STEEL  
COVER.

FIN. FLOOR.

ANCHORED BY INSTALLER.  
(USE ANCHORITE EXPANSION  
CEMENT)

LOWER COLLAPSING HARDWARE.

LOWER COLLAPSING MECH.  
SET IN FLOOR BY C.J. RUSH  
INSTALLER.

3 1/2"(89mm)  
DEEP.

LOWER COLLAPSING MECH.  
SET IN FLOOR BY C.J. RUSH  
INSTALLER.

6 1/4"(159)

12 1/2"(318) DIA.

6 1/4"(159)

**G.C. NOTE**

GENERAL CONTRACTOR TO  
PROVIDE 3 1/2"(89) DEEP x  
12 1/2"(318) DIA. RECESS IN SLAB  
FOR COLLAPSING MECH. ALL  
PREPARATORY WORK TO  
FLOOR & SLAB BY OTHERS.

DETAIL – 4 WING LOWER COLLAPSING MECH.

NOT TO SCALE

OPTIONAL WITH OVERHEAD MANUAL SPEED CONTROL

Date	REVISIONS	By	Issue
No.	ISSUED	Date	

**IMPORTANT NOTICE**

C.J. Rush wishes to bring to your attention the following, for which we assume NO RESPONSIBILITY:

(1) The use of these drawings by other parties is the sole responsibility of that party as to site conditions, measurements, etc.,

(2) Movement of structures by forces causing mis-alignment and improper function of our product.

(3) Results of glass breakage causing bodily harm through improper use or mischief.

**SPECIAL REFERENCE NOTE**

Very often the method of manufacturing as shown on these shop drawings are a development of the skills of the company. Any reproduction and or distribution in whole or in part, without expressed or written consent is strictly prohibited.

C.J. Rush



65 RIVERA DRIVE  
MARKHAM, ONT.  
CANADA, L3R 3J6

Tel. 888-301-5407  
905-944-8005  
Fax 905-944-8006

**4 WING 1500 SERIES  
REVOLVING DOOR  
CANOPY-SECTION**

BUILDING ?	
LOCATION ?	
ARCH-ENG.	
CONTRACTOR ?	
Drawn by ?	Job No.
Checked by?	?
Scale FULL SIZE	Dwg. No.
Date ?	
Finish AS SHOWN	04



