

# 1500A Series - Automatic Revolving Door



AN ELEGANT, HIGH QUALITY AND ENERGY EFFICIENT AUTOMATIC REVOLVING DOOR  
ENTRANCE WITH ENHANCED SAFETY

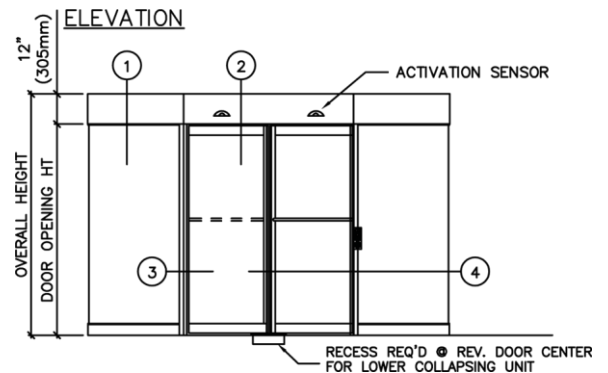
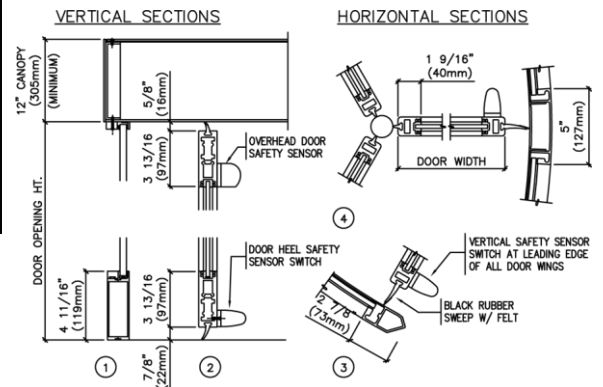
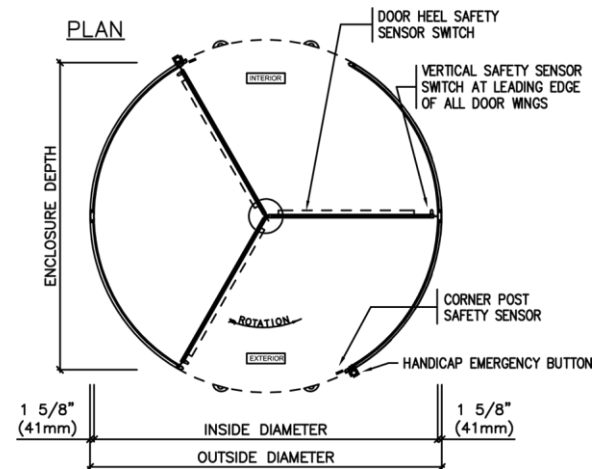
- Automatic center shaft revolving door in 3 or 4 wing configurations
- Custom designs and sizes to meet our customers exacting needs
- Narrow stile construction and hair line joints for architectural elegance
- Concealed heavy duty collapsing mechanism and tapered roller bearings
- PLC control with on board diagnostics for easy, rapid service
- Full perimeter weather seals for energy efficiency
- Upgraded Sensor package designed for added safety
- Optional Rushclad - adhesive applied wrap around design cladding for high-quality, long-lasting finish

All Specifications are Subject to Change

# 1500A Series - Automatic Revolving Door

## 1500 Series Automatic Product Specifications:

Description	Standard Configuration	Options
Diameters	Up to 12' (3700 mm)	Custom diameters available
Heights	7' (2130 mm) to 8'6" (2600 mm) door opening height	
Wings	3 or 4 wing	
Sweeps	Rubber/Felt sweeps	
Locks	Concealed Deadbolt into bottom rails	
Finishes	Clear or bronze anodized standard	Paint or cladding in Rushclad Stainless Steel or Muntz, hair line joints
Collapsing	Emergency bookfold - concealed in rails	
Canopy	12" (300 mm) minimum	Custom heights, extended, as required
Drum glass	5/16" (8 mm) laminated	Consult factory
Wing glass	1/4" (6 mm) tempered glass, factory glazed	
Wing Rails/Stiles	3 - 15/16" (100 mm) top and bottom rails, 1/3-4" (45 mm) stiles	
Bottom bearings	Tapered steel roller bearings	
Speed control	Automatic overhead, PLC programmable Slow speed activation - 1/2 design speed Emergency stop button included	
Ceiling	Two piece circular aluminum, standard	To match special finish, or cladding
Roof	Full circular to match finish	
Lights	Two LED lights per door, 3-1/4" (82 mm) diameter	
Custom Options	Consult Factory	
Design/testing	ANSI/BMHA A156.27, ASTM E-283	Speakers/Enunciator for customer awareness Floor grilles radius cut from stainless steel sheet



Door Diameter	Opening Width	Enclosure Depth
<b>3 Wing</b>		
10 ft.	55 3/4" (1416 mm)	104 5/8" (2657 mm)
11 ft.	61 3/4" (1568 mm)	115" (2921 mm)
12 ft.	67 3/4" (1721 mm)	129 3/8" (3286 mm)
<b>4 Wing</b>		
10 ft.	80 5/8" (2048 mm)	86" (2657 mm)
11 ft.	89 1/8" (2264 mm)	94 1/2" (2400 mm)
12 ft.	97 5/8" (2480 mm)	103" (2616 mm)

Based on outside diameters of doors