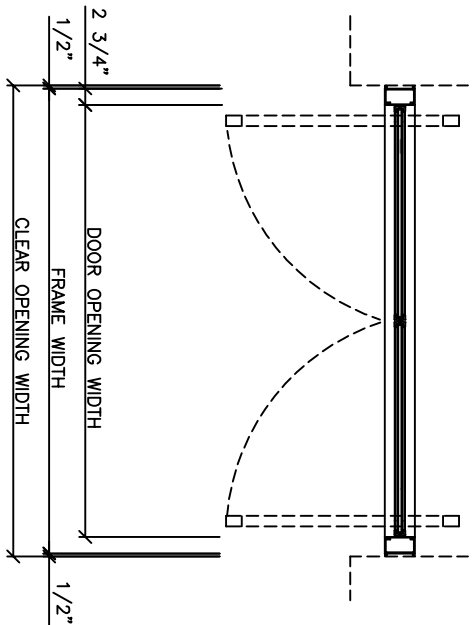


ENTRANCE ELEVATION  
SCALE: 3/4" = 1'-0"  
1 REQUIRED



ENTRANCE PLAN  
SCALE: 3/4" = 1'-0"

SHOP NOTE:

FINISH= ?  
GLASS=?

DOOR HARDWARE

- C.J. RUSH TYPE BALANCED DOOR HARDWARE
- OVERHEAD CONCEALED LCN 2033 SERIES CLOSER
- 1" DIA. ST. ST. OFFSET PUSH/PULL [SATIN FIN.]
- ADAMS RITE MS1861 BOTTOM RAIL DEADLOCK
- WITH CYL. AT EXT., THUMBTURN AT INT. [FIN. TO MATCH DOOR]
- 1/2"x5" EXTRUDED ALUM. THRESHOLD [MILL FIN.]
- FULL PERIMETER C. J. RUSH STD. WEATHERSTRIPPING

Date	REVISIONS	By	Issue
No.	ISSUED		
	FOR APPROVAL	?	Date

IMPORTANT NOTICE

- C.J. Rush wishes to bring to your attention the following, for which we assume NO RESPONSIBILITY:
- (1) The use of these drawings by other parties is the sole responsibility of that party as to site conditions, measurements, etc.,
  - (2) Movement of structures by forces causing mis-alignment and improper function of our product.
  - (3) Results of glass breakage causing bodily harm through improper use or mischief.
- SPECIAL REFERENCE NOTE
- Very often the method of manufacturing as shown on these shop drawings are a development of the skills of the company. Any reproduction and or distribution in whole or in part, without expressed or written consent is strictly prohibited.
- C.J. Rush

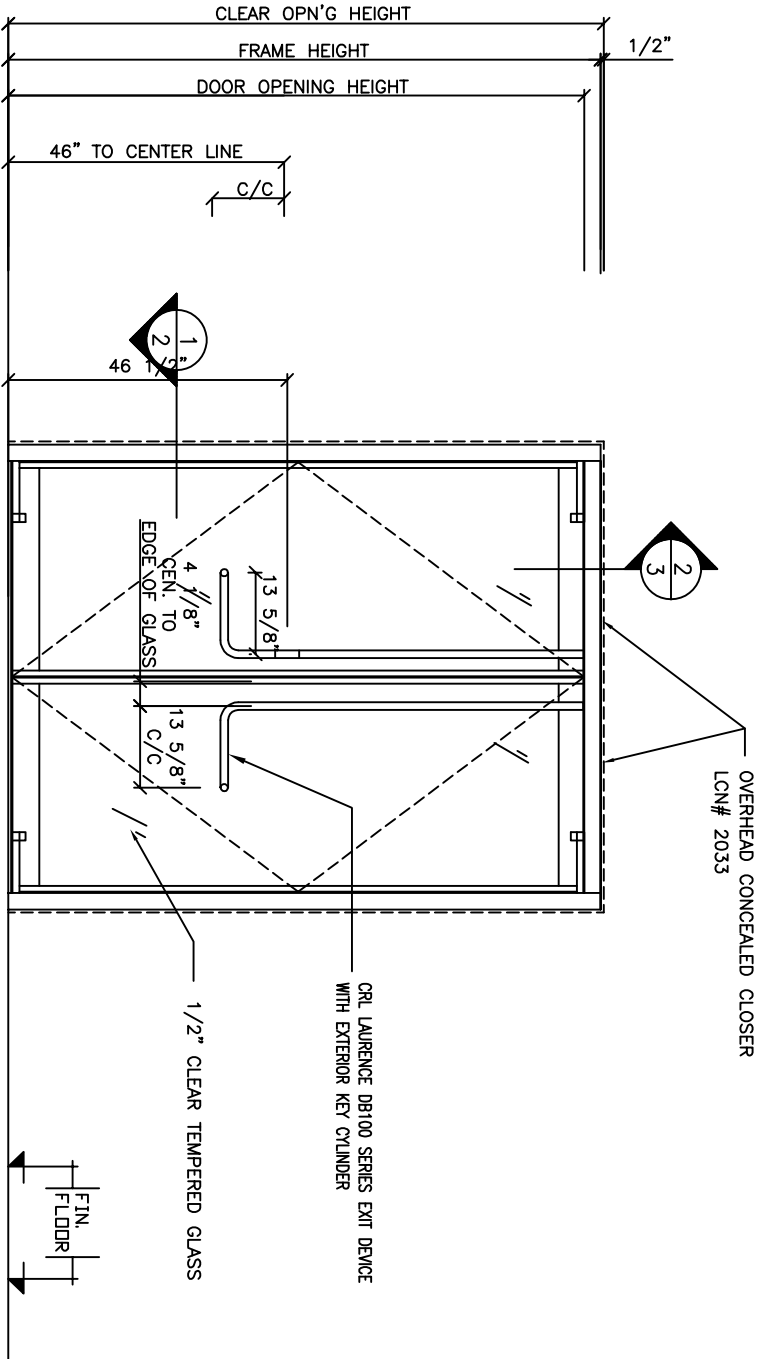


65 RIVERA DRIVE  
MARKHAM, ONT.  
CANADA, L3R 5J6

Tel. 888-301-5407  
905-944-8005  
Fax 905-944-8006

3030 SERIES BALANCED DOOR  
PLAN / ELEVATION

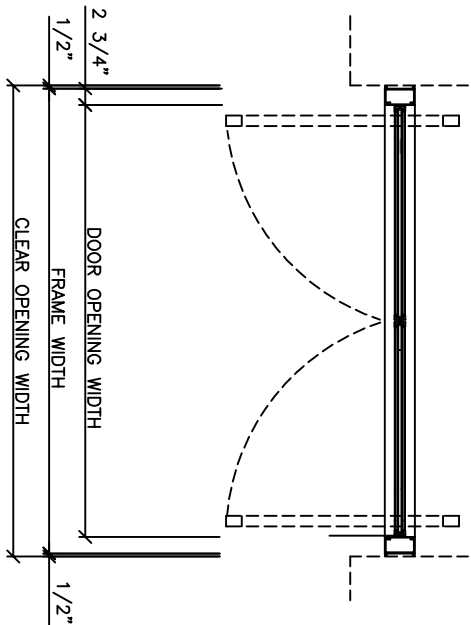
BUILDING ?	
LOCATION ?	
ARCH-ENG.	
CONTRACTOR ?	
Drawn by ?	Job No.
Checked by	?
Scale 3/4"=1'-0"	
Date ?	Dwg. No.
Finish AS SHOWN	01



ENTRANCE ELEVATION

SCALE: 3/4" = 1'-0"

1 REQUIRED



ENTRANCE PLAN

SCALE: 3/4" = 1'-0"

SHOP NOTE:

FINISH= ?

GLASS=?

DOOR HARDWARE

- C.J. RUSH TYPE BALANCED DOOR HARDWARE
- OVERHEAD CONCEALED LCN 2033 SERIES CLOSER
- CRL LAURENCE DB100 SERIES EXIT DEVICE WITH EXTERIOR KEY CYLINDER [SATIN FIN.]
- 1/2"x5" EXTRUDED ALUM. THRESHOLD [MILL FIN.]
- FULL PERIMETER C. J. RUSH STD. WEATHERSTRIPPING

Date	REVISIONS	By	Issue
No.	ISSUED		
	FOR APPROVAL	?	Date

IMPORTANT NOTICE

C.J. Rush wishes to bring to your attention the following, for which we assume NO RESPONSIBILITY:

- (1) The use of these drawings by other parties is the sole responsibility of that party as to site conditions, measurements, etc.,
- (2) Movement of structures by forces causing mis-alignment and improper function of our product.
- (3) Results of glass breakage causing bodily harm through improper use or mischief.

SPECIAL REFERENCE NOTE

Very often the method of manufacturing as shown on these shop drawings are a development of the skills of the company. Any reproduction and or distribution in whole or in part, without expressed or written consent is strictly prohibited.

C.J. Rush



65 RIVERA DRIVE  
MARKHAM, ONT.  
CANADA, L3R 5J6

Tel. 888-301-5407  
905-944-8005  
Fax 905-944-8006

3030 SERIES BALANCED DOOR

PLAN / ELEVATION

BUILDING ?	
LOCATION ?	
ARCH-ENG.	
CONTRACTOR ?	
Drawn by ?	Job No.
Checked by	?
Scale 3/4"=1'-0"	
Date ?	Dwg. No.
Finish AS SHOWN	01

Date	REVISIONS	By	Issue
No.	ISSUED	Date	

IMPORTANT NOTICE

C.J. Rush wishes to bring to your attention the following, for which we assume NO RESPONSIBILITY:

(1) The use of these drawings by other parties is the sole responsibility of that party as to site conditions, measurements, etc.,

(2) Movement of structures by forces causing mis-alignment and improper function of our product.

(3) Results of glass breakage causing bodily harm through improper use or mischief.

SPECIAL REFERENCE NOTE

Very often the method of manufacturing as shown on these shop drawings are a development of the skills of the company. Any reproduction and or distribution in whole or in part, without expressed or written consent is strictly prohibited.

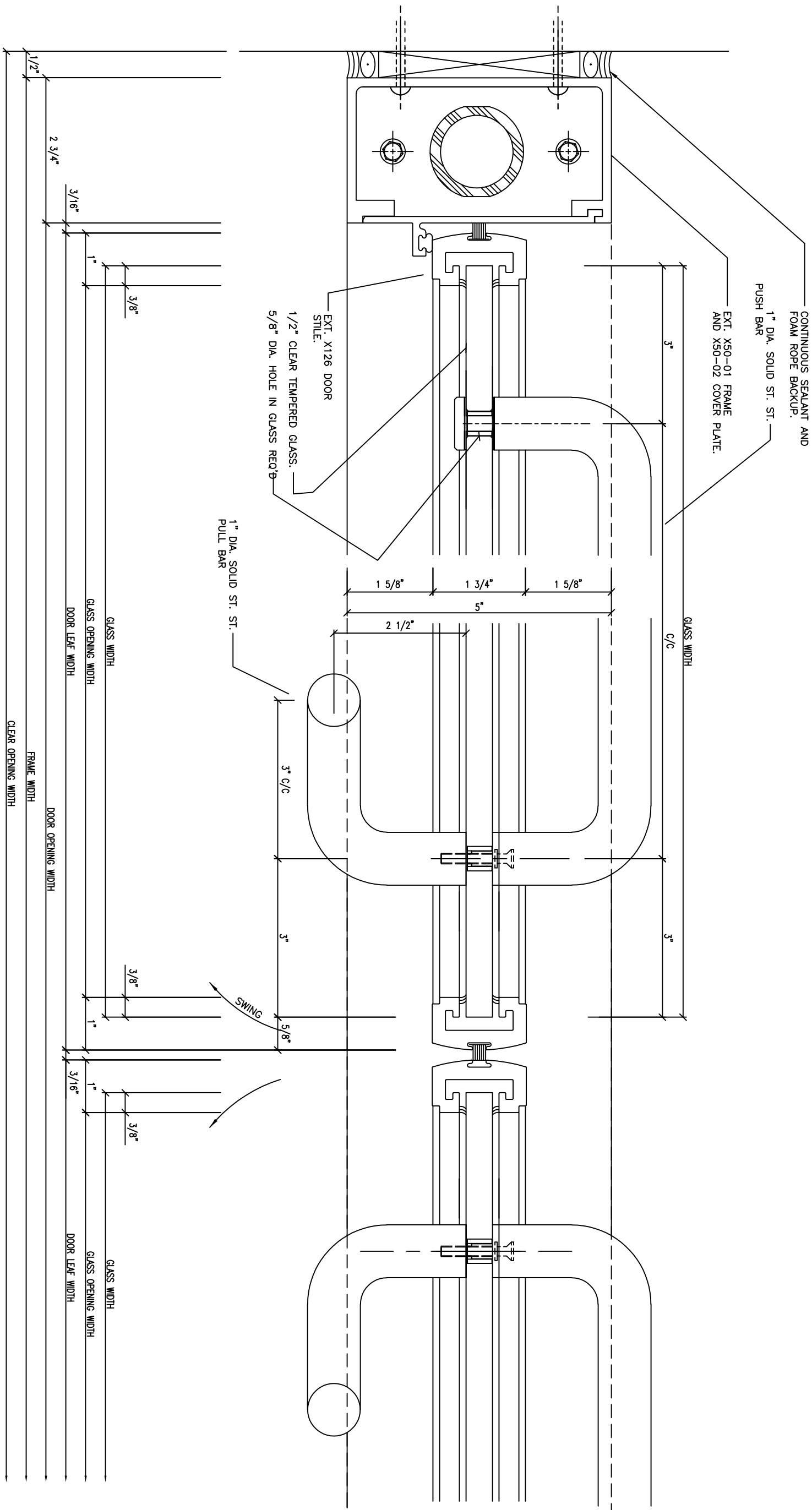
C.J. Rush



65 RIVERA DRIVE  
MARKHAM, ONT.  
CANADA, L3R 5J6

Tel: 888-301-5407  
905-944-8005  
Fax 905-944-8006

BUILDING	?
LOCATION	?
ARCH-ENG.	
CONTRACTOR	?
Drawn by	?
Checked by	???
Scale	FULL SIZE
Date	?
Finish	02





[illegible]

## IMPORTANT NOTICE

C.J. Rush wishes to bring to your attention the following, for which we assume NO RESPONSIBILITY:

(1) The use of these drawings by other parties is the sole responsibility of that party as to site conditions, measurements, etc.,

(2) Movement of structures by forces causing misalignment and improper function of our product.

(3) Results of glass breakage causing bodily harm through improper use or mischief.

## SPECIAL REFERENCE NOTE

Very often the method of manufacturing as shown on these shop drawings are a development of the skills of the company. Any reproduction and or distribution in whole or in part, without expressed or written consent is strictly prohibited.

C.J. Rush

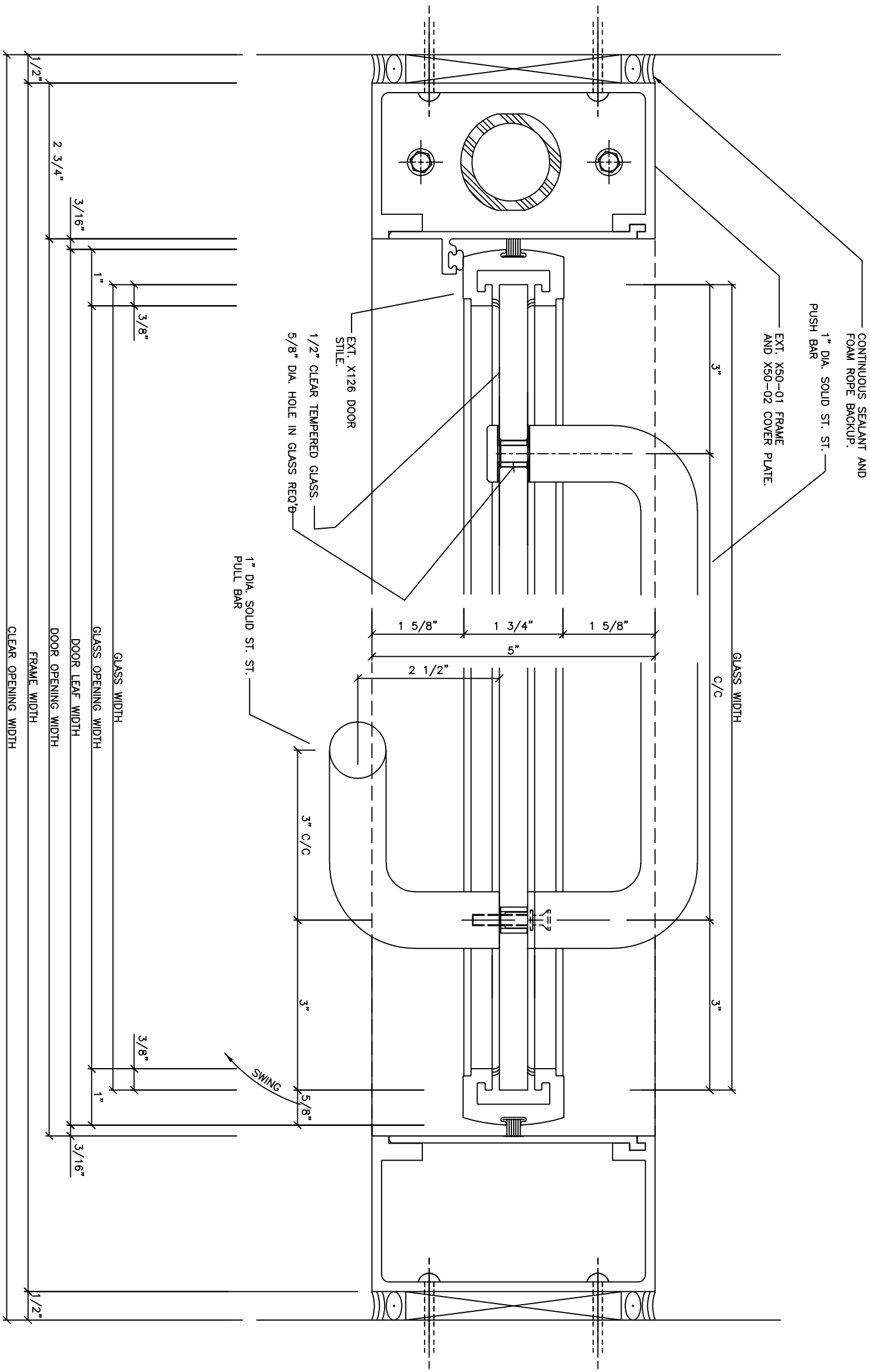


65 RIVIERA DRIVE  
MARKHAM, ONT.  
CANADA, L3R 5J6

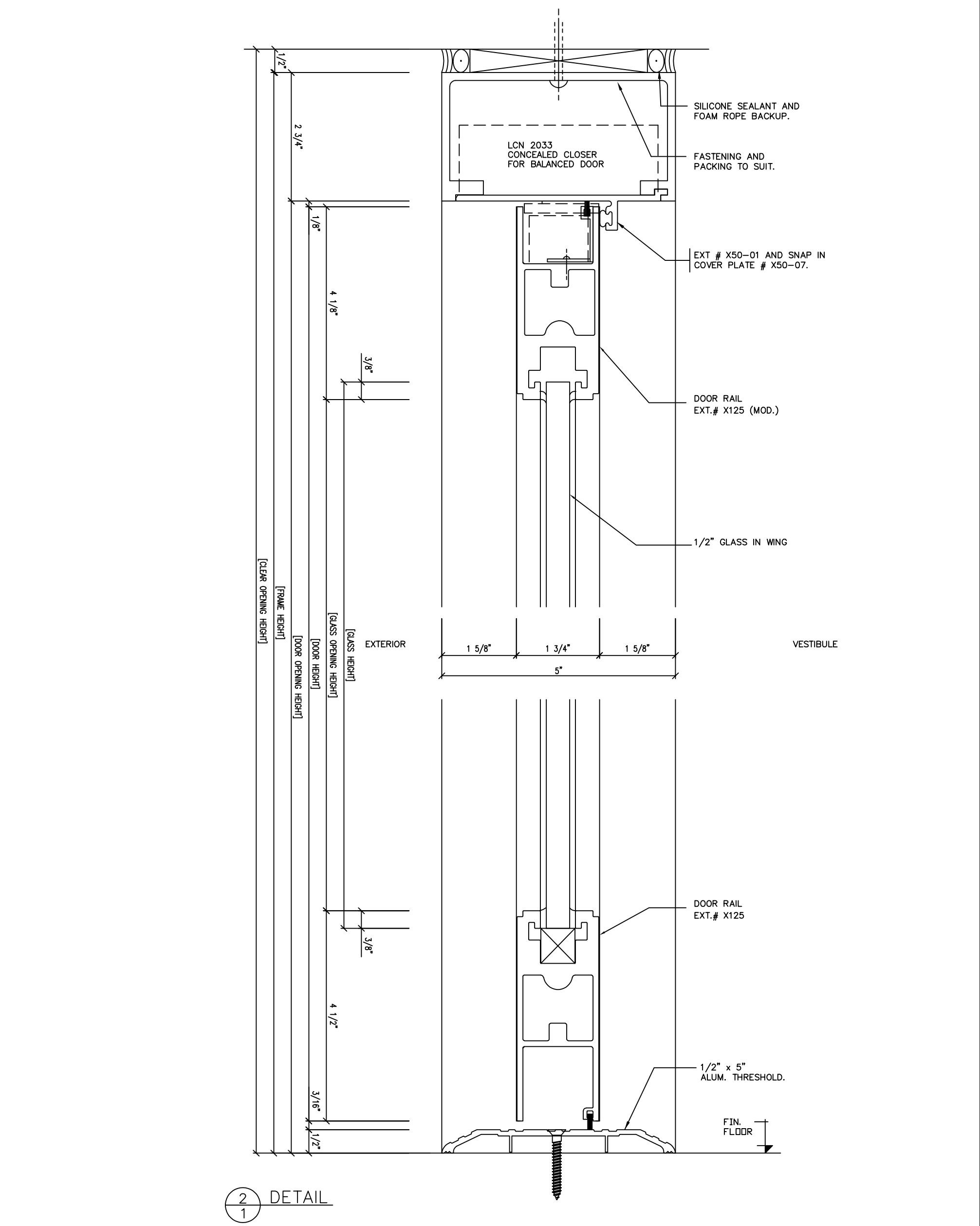
Tel. 888-301-5407  
905-944-8005  
Fax 905-944-8006

2030 SER. BALANCED DOOR  
PLAN-DETAILS

BUILDING	?	Job No. ???? Dwg. No. 02
LOCATION	?	
ARCH-ENG.		
CONTRACTOR	?	
Drawn by	?	
Checked by		
Scale	FULL SIZE	
Date	?	
Finish		



1 DETAIL  
1 FULL SCALE



Date	REVISIONS	By	Issue
No.	ISSUED		
	FOR APPROVAL	?	Date
IMPORTANT NOTICE			
C.J. Rush wishes to bring to your attention the following, for which we assume NO RESPONSIBILITY:			
(1) The use of these drawings by other parties is the sole responsibility of that party as to site conditions, measurements, etc.,			
(2) Movement of structures by forces causing mis-alignment and improper function of our product.			
(3) Results of glass breakage causing bodily harm through improper use or mischief.			
SPECIAL REFERENCE NOTE			
Very often the method of manufacturing as shown on these shop drawings are a development of the skills of the company. Any reproduction and or distribution in whole or in part, without expressed or written consent is strictly prohibited.			
C.J. Rush			
65 RIVERA DRIVE MARKHAM, ONT. CANADA, L3R 5J6			
Tel: 888-301-5407 905-944-8005 Fax 905-944-8006			
BALANCED DOOR SECTION-DETAILS			
BUILDING	?		
LOCATION	?		
ARCH-ENG.			
CONTRACTOR	?		
Drawn by	?	Job No.	
Checked by	???		
Scale	FULL SIZE	Dwg. No.	
Date	?		
Finish		03	