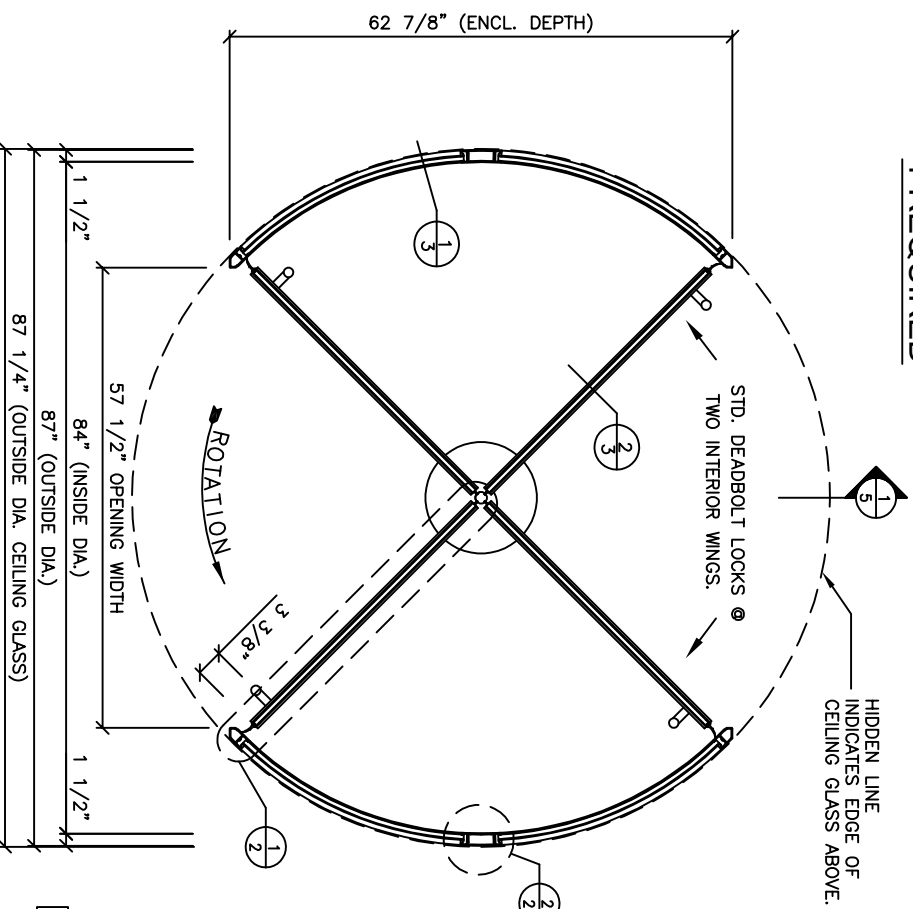


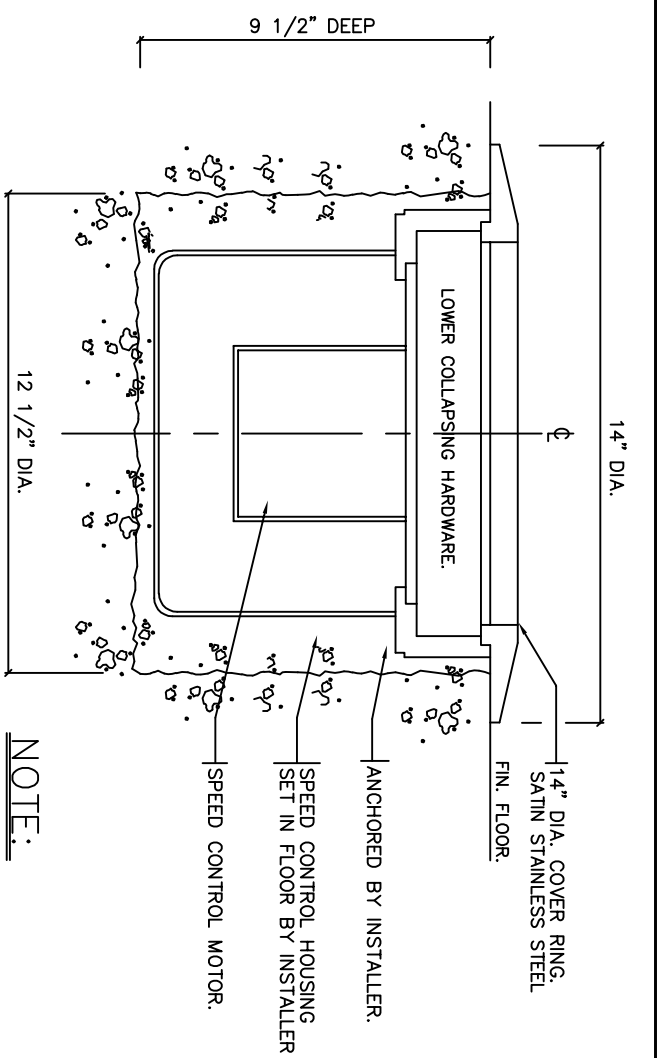
**REVOLVING DOOR ENTRANCE ELEVATION**  
**1 REQUIRED**



**REVOLVING DOOR ENTRANCE PLAN**

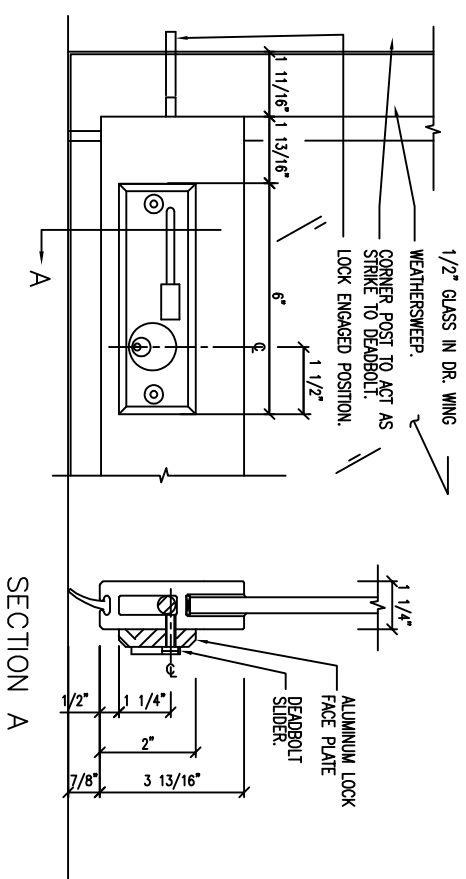
**NOTE:**  
FLOOR MUST BE LEVEL AND TRUE AT INTERIOR OF REV. DOOR.

**SHOP NOTE:**  
FINISH= ANODIZED/PAINT  
CURVED GLASS TINT= CLEAR  
DR. WG. GLASS TINT= CLEAR  
CEILING GLASS TINT= CLEAR  
FLOOR MANUAL SPEED CONTROL



**DETAIL - 4 WING SPEED CONTROL**  
SCALE: NINE

**NOTE:**  
GENERAL CONTRACTOR TO PROVIDE 9 1/2" (241) DEEP X 12 1/2" (318) DIA. RECESS IN SLAB FOR SPEED CONTROL. ALL PREPARATORY WORK TO FLOOR & SLAB BY OTHERS.



**STD. DEADBOLT DETAILS**  
SCALE: NINE

Date	REVISIONS	By	Issue
No.	ISSUED	Date	

**IMPORTANT NOTICE**

C.J. Rush wishes to bring to your attention the following, for which we assume NO RESPONSIBILITY:  
(1) The use of these drawings by other parties is the sole responsibility of that party as to site conditions, measurements, etc..  
(2) Movement of structures by forces causing mis- alignment and improper function of our product.  
(3) Results of glass handling causing bodily harm through improper use or mishandling.

**SPECIAL REFERENCE NOTE**

Very often the method of manufacturing as shown on these shop drawings are a development of the skills of the company. Any reproduction and/or distribution in whole or in part, without expressed or written consent is strictly prohibited.

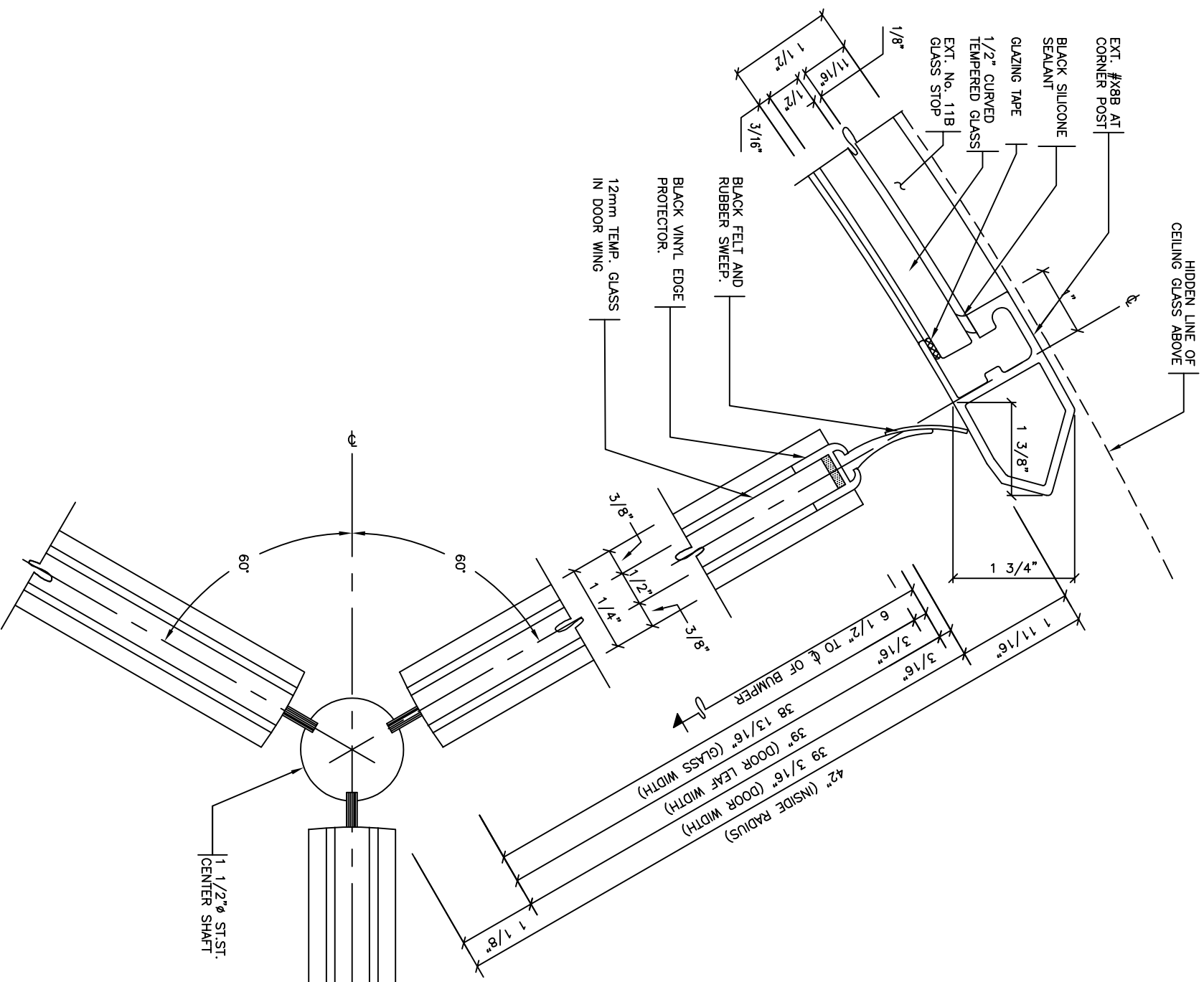
C.J. Rush



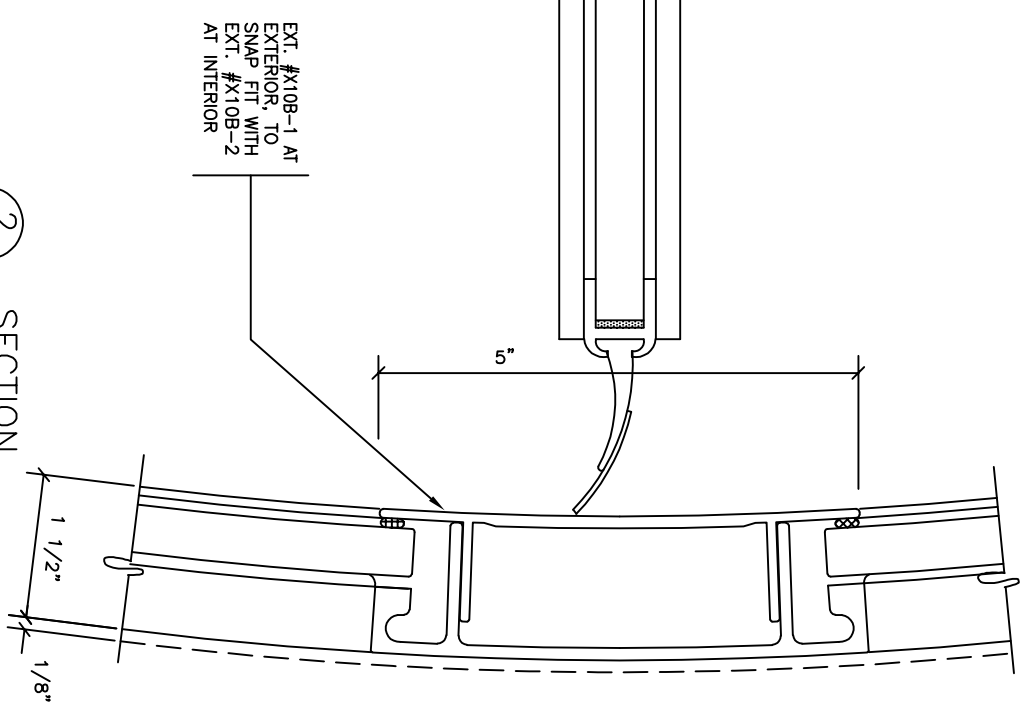
65 RIVERA DRIVE  
MARKHAM, ONT.  
CANADA, L3R 5J6  
Tel: 888-301-5407  
905-944-8005  
Fax: 905-944-8006

**2500AG SERIES 4 WING  
REVOLVING DOOR  
ELEVATION / PLAN /  
DETAILS**

BUILDING	
LOCATION	
ARCH-ENG.	
CONTRACTOR	
Drawn by	Job No.
Checked by	
Scale	
Date	Dwg. No.
Finish	01



1 SECTION



2 SECTION

Date	REVISIONS	By	Issue

**IMPORTANT NOTICE**

C.J. Rush wishes to bring to your attention the following, for which we assume **NO RESPONSIBILITY**:

(1) The use of these drawings by other parties is the sole responsibility of that party as to site conditions, measurements, etc.

(2) Movement of structures by forces causing misalignment and improper function of our product.

(3) Results of glass breakage causing bodily harm through improper use or mischief.

**SPECIAL REFERENCE NOTE**

Very often the method of manufacturing as shown on these shop drawings are a development of the skills of the company. Any reproduction and/or distribution in whole or in part, without expressed or written consent is strictly prohibited.

C.J. Rush



65 RIVERA DRIVE  
MARKHAM, ONT.  
CANADA, L3R 5J6

Tel: 888-301-5407  
905-944-8005  
Fax 905-944-8006

**2500AG SERIES 3 WING  
REVOLVING DOOR  
PLAN / DETAILS**

BUILDING	
LOCATION	
ARCH-ENG.	
CONTRACTOR	
Drawn by	Job No.
Checked by	
Scale	
Date	Dwg. No.
Finish	02

OUTSIDE DIA.

NOTE: ABSOLUTELY NO LOAD IS TO BE IMPOSED ON STANLEY / RUSH CANOPY.

TEMPERED LAMINATED CEILING GLASS

BLACK RUBBER SWEEP W/FELT

7/8" Ø REV. DR. BUMPER (SEE FINISH NOTE)

EXT. No. 12 DOOR RAIL  
1/2" TEMPERED GLASS (SEE FINISH NOTE)

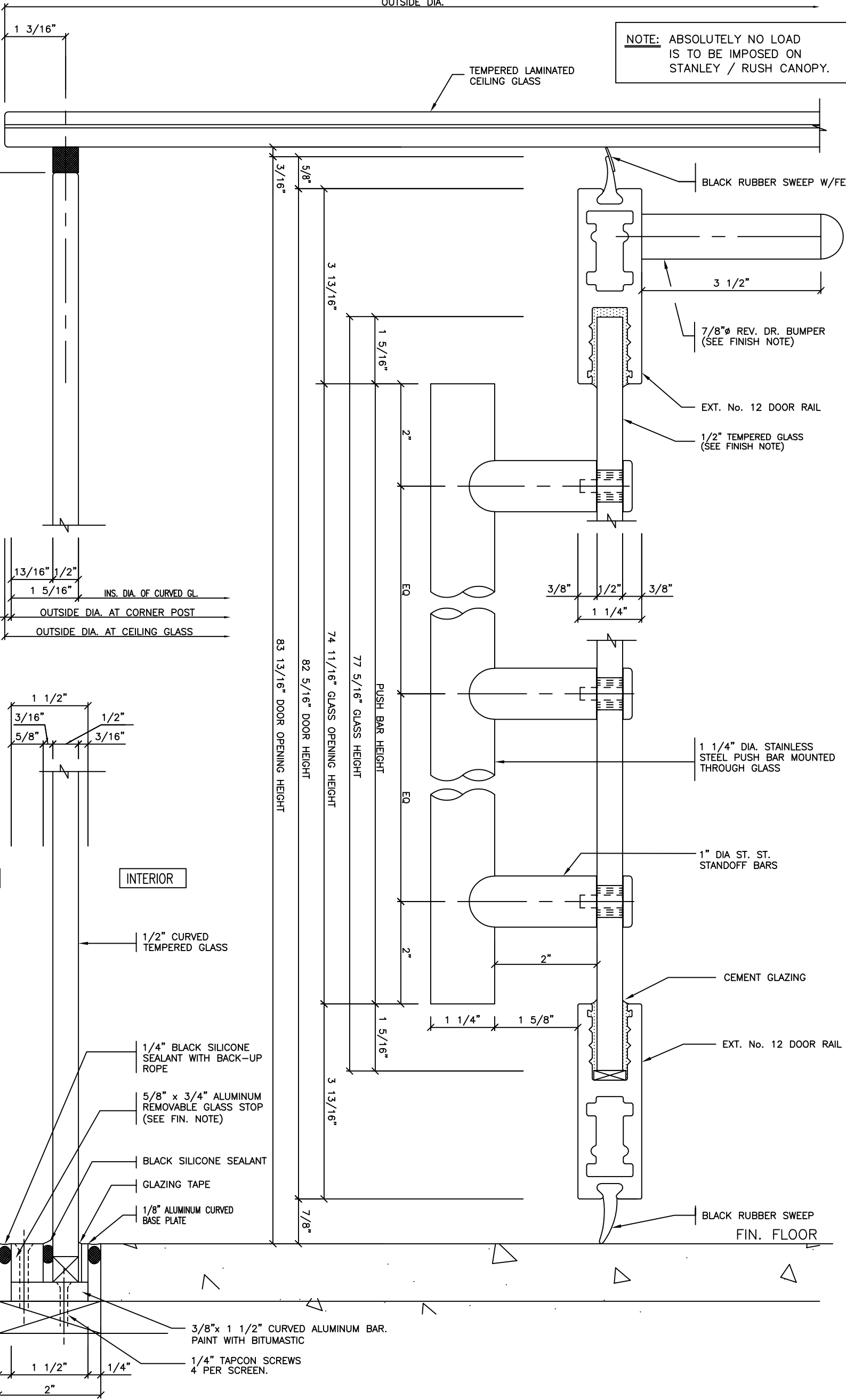
1 1/4" DIA. STAINLESS STEEL PUSH BAR MOUNTED THROUGH GLASS

1" DIA ST. ST. STANDOFF BARS

CEMENT GLAZING

EXT. No. 12 DOOR RAIL

BLACK RUBBER SWEEP FIN. FLOOR



EXTERIOR

INTERIOR

4 SECTION

5 SECTION

84" US CEILING GLASS / FFL.  
83 3/4" GLASS HEIGHT  
84 11/16" TOP OF CEILING GLASS TO FFL.


13/16" 1/2"  
1 5/16" INS. DIA. OF CURVED GL.  
1/8" OUTSIDE DIA. AT CORNER POST  
OUTSIDE DIA. AT CEILING GLASS

1 1/2"  
3/16" 1/2"  
5/8" 3/16"

1/2" CURVED TEMPERED GLASS  
1/4" BLACK SILICONE SEALANT WITH BACK-UP ROPE  
5/8" x 3/4" ALUMINUM REMOVABLE GLASS STOP (SEE FIN. NOTE)  
BLACK SILICONE SEALANT  
GLAZING TAPE  
1/8" ALUMINUM CURVED BASE PLATE

3/8" x 1 1/2" CURVED ALUMINUM BAR. PAINT WITH BITUMASTIC  
1/4" TAPCON SCREWS 4 PER SCREEN.

2500 SERIES 3 WING REVOLVING DOOR SECTION / DETAILS	
BUILDING	
LOCATION	
ARCH-ENG.	
CONTRACTOR	
Drawn by	Job No.
Checked by	
Scale	Dwg. No.
Date	03
Finish	



65 RIVERA DRIVE  
MARKHAM, ONT.  
CANADA, L3R 5J6

Tel: 888-301-5407  
905-944-8005  
Fax: 905-944-8006

**IMPORTANT NOTICE**

C.I. Rush wishes to bring to your attention the following, for which we assume NO RESPONSIBILITY:

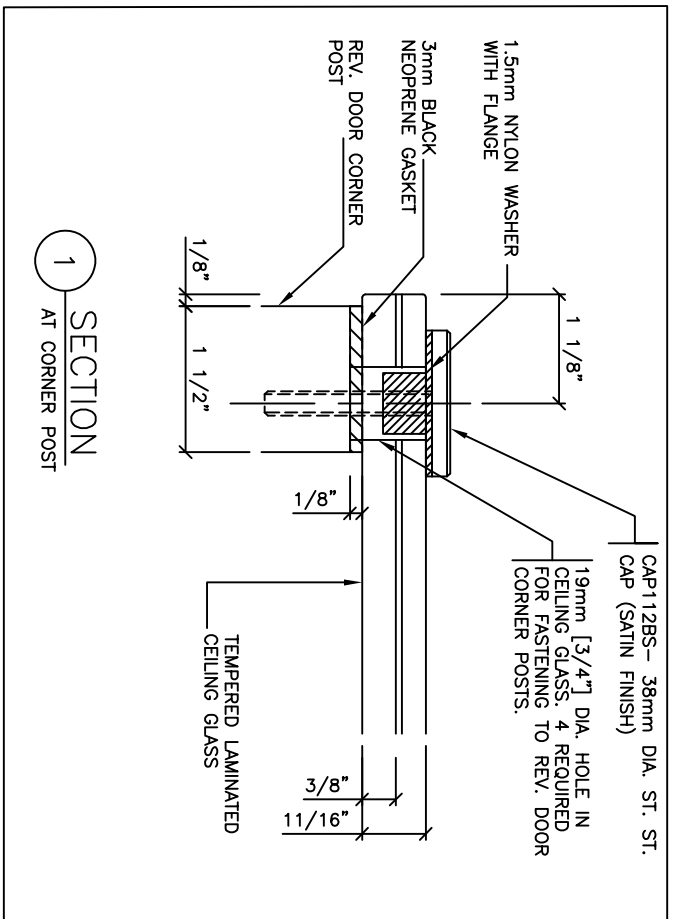
- (1) The use of these drawings by other parties is the sole responsibility of that party as to site conditions, measurements, etc.
- (2) Movement of structures by forces causing misalignment and improper function of our product.
- (3) Results of glass breakage causing bodily harm through improper use or mishandling.

SPECIAL REFERENCE NOTE

Very often the method of manufacturing as shown on these shop drawings are a development of the skills of the company. Any reproduction and/or distribution in whole or in part, without expressed or written consent is strictly prohibited.

C.I. Rush

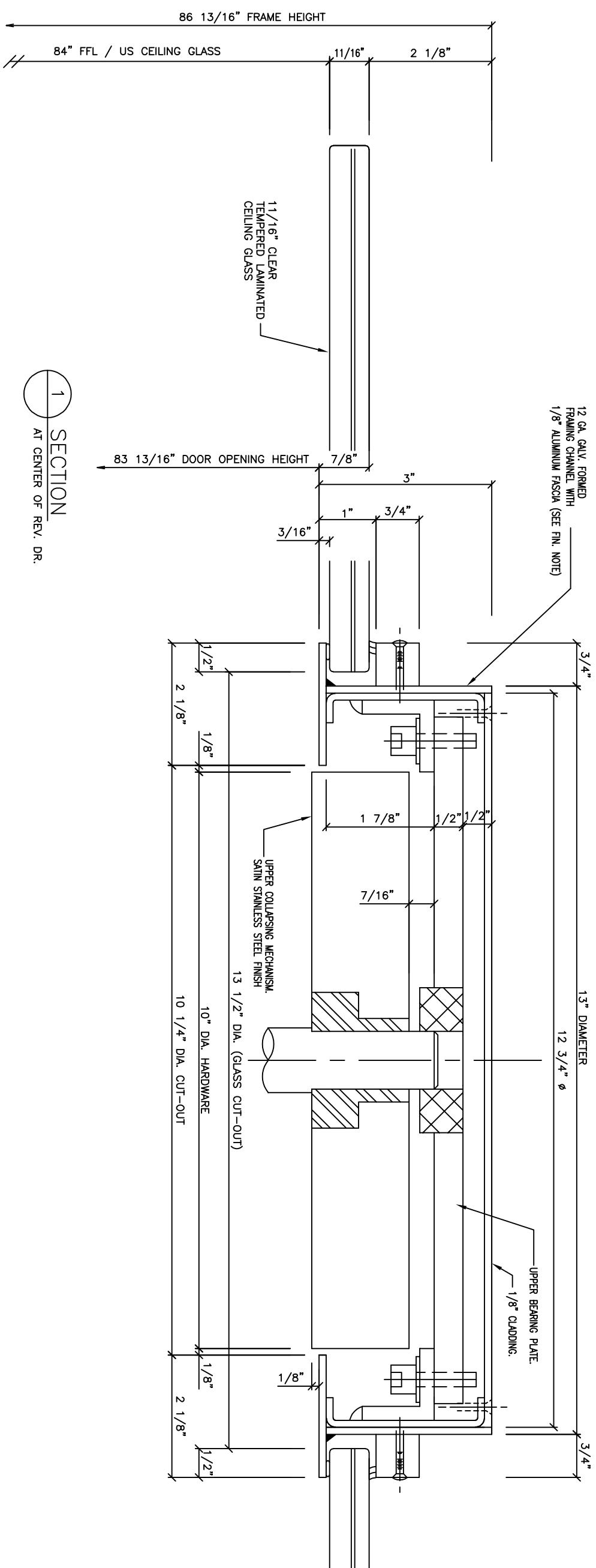
Date	REVISIONS	By	Issue
No.	ISSUED	Date	



EXTERIOR

NOTE: ABSOLUTELY NO LOAD IS TO BE IMPOSED ON STANLEY / RUSH CANDOPY

INTERIOR



SECTION 1 AT CENTER OF REV. DR.

Date	REVISIONS	By	Issue
No.	ISSUED	Date	

IMPORTANT NOTICE

- C.I. Rush wishes to bring to your attention the following, for which we assume NO RESPONSIBILITY:
- (1) The use of these drawings by other parties is the sole responsibility of that party as to site conditions, measurements, etc.
  - (2) Movement of structures by forces causing mis-alignment and improper function of our product.
  - (3) Results of glass breakage causing bodily harm through improper use or misuse.

SPECIAL REFERENCE NOTE

Very often the method of manufacturing as shown on these shop drawings are a development of the skills of the company. Any reproduction and/or distribution in whole or in part, without expressed or written consent is strictly prohibited.

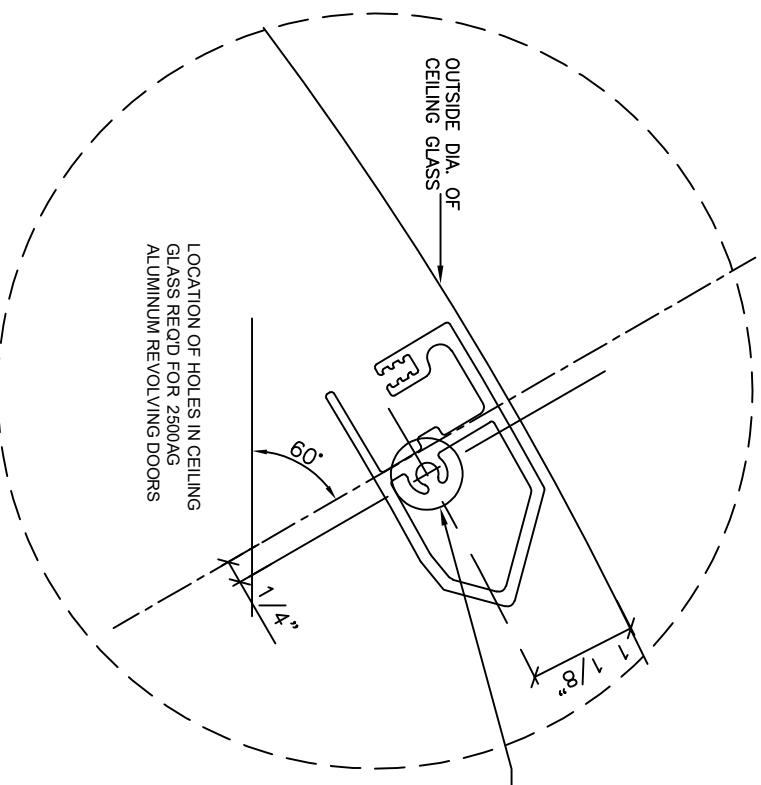
C.I. Rush



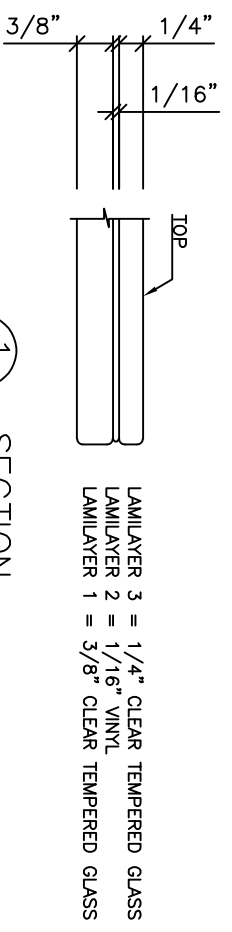
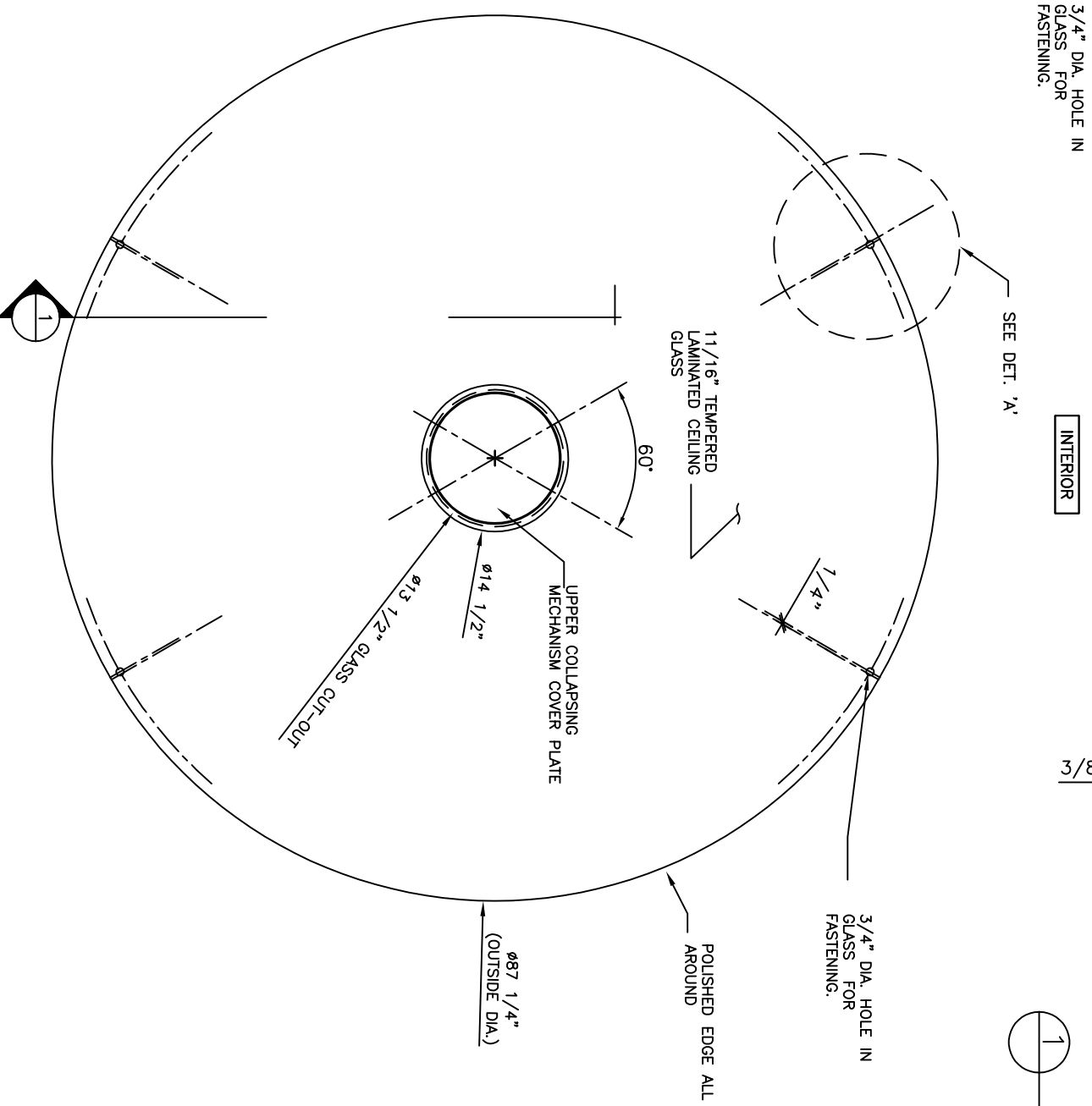
65 RIVERA DRIVE  
MARKHAM, ONT.  
CANADA, L3R 5J6  
Tel: 888-301-5407  
905-944-8005  
Fax: 905-944-8006

2500AG SERIES 3 WING  
REVOLVING DOOR  
SECTION / DETAILS

BUILDING	
LOCATION	
ARCH-ENG.	
CONTRACTOR	
Drawn by	Job No.
Checked by	
Scale	
Date	Dwg. No.
Finish	04



DETAIL 'A'



ROOF PLAN  
1 REQUIRED

**11/16" CLEAR LAMINATED TEMPERED CEILING GLASS MADE OF:**

- 1/4" CLEAR TEMPERED GLASS
- 1/16" VINYL
- 3/8" CLEAR TEMPERED GLASS

Date	REVISIONS	By	Issue

**IMPORTANT NOTICE**

C.J. Rush wishes to bring to your attention the following, for which we assume NO RESPONSIBILITY:  
 (1) The use of these drawings by other parties is the sole responsibility of that party as to site conditions, measurements, etc.  
 (2) Movement of structures by forces causing mis-alignment and improper function of our product.  
 (3) Results of glass breakage causing bodily harm through improper use or mishandling.

**SPECIAL REFERENCE NOTE**

Very often the method of manufacturing as shown on these shop drawings are a development of the skills of the company. Any reproduction and/or distribution in whole or in part, without expressed or written consent is strictly prohibited.

C.J. Rush



65 RIVERA DRIVE  
 MARKHAM, ONT.  
 CANADA, L3R 3J6  
 Tel: 888-301-5407  
 905-944-8005  
 Fax: 905-944-8006

2500AG SERIES 3 WING  
 REVOLVING DOOR  
 ROOF PLAN

BUILDING	
LOCATION	
ARCH-ENG.	
CONTRACTOR	
Drawn by	Job No.
Checked by	
Scale	
Date	Dwg. No.
Finish	05